

REPORT OF THE COUNCIL

for the year ended 31st December, 1942.

The Council, in presenting its one hundred and fourteenth Annual Report, regrets that, owing to the restrictions imposed by the Paper Control of the Ministry of Supply, the Report must be confined to the accounts and a very condensed summary of activities. Consequently there are many matters which it has not been possible to include or which have been dealt with only very briefly. If any Fellow requires further information, will he please apply in writing to the Secretary.

THE ANNUAL GENERAL MEETING.—The last Annual General Meeting, held on the 19th August, 1942, after several postponements, was noteworthy as the first since 1903 at which there was a contested election. Fellows received many circulars from the different parties concerned, in which the arguments for and against the decisions of the Council were fully ventilated.

The voting at the Annual Meeting was by postal ballot, specially authorised by the Lord President of the Privy Council, and the results were announced at, and published directly after, the Meeting. All those members recommended by Council to retire from that body and those recommended to be elected into the Council, were chosen by a large majority; those Fellows recommended as Officers were also elected.

CHANGE IN SECRETARYSHIP.—On the 26th August, 1942, Dr. Julian S. Huxley resigned from the post of Secretary, to which he had been elected unopposed, and also his membership of the Council. Dr. Sheffield A. Neave, C.M.G., O.B.E., M.A., D.Sc., F.R.E.S., was elected by Council as Secretary (unpaid), and took office on the 16th September, 1942.

A COMMITTEE ON ADMINISTRATION.—Arising out of a motion by Mr. James Fairbairn, submitted after the Annual General Meeting, Council appointed a Committee to inquire into the present administration of the Society and to report to Council. This Committee, which became known as the Ad Hoc Committee, comprised four Members of Council and five Fellows who were not Members of Council; after several meetings this Committee issued an Interim Report which was adopted by Council. However, two of the members who had previously approved the Interim Report subsequently withdrew their approval, and it then became evident that substantial agreement among the members of the Committee could not be reached, and it was unanimously decided at its next meeting to recommend to Council that it should be dissolved. The Council, in accepting this recommendation, suggested that the Fellows might like to appoint a Committee of their own with the same terms of reference. The Council recognised that there were further matters of policy as to which Fellows might wish to make suggestions, and arrangements are being made for the formation of a Committee as representative of the Fellows as possible.

CHANGE IN PRESIDENCY.—At the Meeting of Council held on the 18th November, 1942, The Earl of Onslow, P.C., G.B.E., F.S.A., who for many months had been prevented by ill-health from taking an active part in the business of the Society, resigned from the office of President. The Council received Lord Onslow's resignation with deep regret and recognised that, in their retiring President, they were losing a devoted friend of the

Society, and one whose name would always be prominently associated with zoology in its widest sense. In particular he has been a staunch, energetic and most practical advocate of the preservation and the study of wild life. To fill the vacancy created by Lord Onslow's resignation, Council elected Henry G. Maurice, Esq., C.B., to be President until the next Annual General Meeting.

CHANGES IN COUNCIL.—Since the last Annual General Meeting the Council has, in accordance with the provisions of the Charter, elected to their body Sir Peter Chalmers Mitchell, C.B.E., M.A., D.Sc., LL.D., F.R.S., S. Wilson Kitchen, Esq., and James Gray, Esq., M.C., Sc.D., LL.D., F.R.S., in place of Lt.-Gen. Sir George M. W. Macdonogh, G.B.E., K.C.B., K.C.M.G. (died 10th July, 1942), Julian S. Huxley, Esq., M.A., D.Sc., F.R.S. (resigned 26th August, 1942), and Sir Arthur Smith Woodward, LL.D., F.R.S. (resigned 18th November, 1942).

Sir Peter Chalmers Mitchell resigned on the 16th December, 1942, and David A. Bannerman, Esq., M.B.E., M.A., Sc.D., F.R.S.E., was elected to fill the vacancy.

SILVER MEDAL.—During the year the Silver Medal of the Society has been awarded to Alfred Ezra, Esq., O.B.E. (for his numerous and munificent donations to the Society over a long period of years, also for his long service on Council and as a Vice-President), and to Dr. Geoffrey Marr Vevers (for his services to the Society as Superintendent over a period of twenty years at Regent's Park and the valuable part he played in the formation and development of Whipsnade Zoological Park).

STAFF.—Council desires to put on record its appreciation of the devoted work of all branches of the Society's staff, who have carried on short-handed in spite of long hours and many difficulties.

The Society has suffered a severe loss by the death, on the 5th May, 1942, of Mr. F. W. Bond, the Assistant Treasurer, at the age of fifty-five, after thirty-eight years' service with the Society. The interests of the Society were always his first consideration, and in later years his long experience of the Society's affairs and his sound ability proved invaluable.

THE BOND PHOTOGRAPHIC COLLECTION.—Mr. F. W. Bond had built up a large and comprehensive collection of photographs of the animals exhibited in the Gardens at Regent's Park and at Whipsnade Park. In accordance with the wish expressed by him during his lifetime, his widow has offered the collection to the Society. This gift has been gratefully accepted.

ORDINARY GENERAL MEETINGS.—Until further notice, these meetings are being held in the Meeting Room at the Society's Offices on the third Wednesday of each month (except September and October), at 4:30 p.m. from April till August and at 3.45 p.m. from November till March.

SCIENTIFIC MEETINGS.—These meetings normally held in the Meeting Room at the Society's Offices have been suspended until further notice, but arrangements have been made to hold joint meetings with the Linnean Society of London, at Burlington House, W.1. Dates and times of these Meetings can be obtained on application to the Secretary.

ROLL OF FELLOWS.—The number of Fellows at 31st December, 1942, was 6,975, as compared with 7,391 at the end of 1941.

SCIENTIFIC PUBLICATIONS.—During the year complete volumes of *Proceedings*, Series A (General and Experimental), and Series B (Systematic and Morphological), were issued. Of the *Transactions*, part 2 of Vol. 25 was published.

A grant of £500 was received from the Rockefeller Grant to the Royal Society towards the cost of these publications for 1942.

ZOOLOGICAL RECORD.—The complete volume, No. 78, dealing principally with the literature of 1941, was published on 31st December, 1942. Donations to the Zoological Record Fund received during the year (including the Society's own contribution) amounted to £948, compared with £1,081 for 1941. After charging the Fund with the loss for the year 1942, the balance in hand was reduced from £1,168 at 31st December, 1941, to £787 at the end of 1942. The balance on this Fund has been decreasing for several years, and as the amount required to finance each volume is about £2,000, further annual donations are urgently needed. Societies, institutions and individuals who wish the *Record* to be maintained are invited to give their support in the form of annual donations to the Fund.

LIBRARY.—The majority of the books are still available in the Library, which is now the only large Zoological Library to remain open in London.

During the war the purchase of books has had to be curtailed for reasons of economy, and gifts of books to the Library will be greatly appreciated, particularly copies of Fellows' own works.

During 1942, 794 volumes were borrowed from the Library as against 863 in 1941.

VISITORS.—The number of visitors during 1942 was 1,344,568 at Regent's Park and 100,288 at Whipsnade Park. The corresponding figures for 1941 were 512,966 and 246,139 respectively.

PRICE OF ADMISSION.—The price of admission for adults was increased on the 13th July, 1942, from 1s. to 1s. 6d. at both Regent's Park and Whipsnade Park. The price for children was retained at 6d.

ANIMALS IN THE COLLECTION.—The number of animals in the Collection (excluding Fish and Invertebrates) at 31st December, 1942, was 1,752 at Regent's Park and 1,003 at Whipsnade Park. The corresponding figures at 31st December, 1941, were 1,574 and 1,285, respectively. The additions to the Collection during the year included 2 llamas and 154 valuable birds presented by Mr. Alfred Ezra and 29 valuable birds presented by Mr. J. Spedan Lewis. The number of mammals and birds bred during 1942 was 43 at Regent's Park and 265 at Whipsnade Park.

NEW SPECIES AND SUBSPECIES.—No species or subspecies new to the collection were added during the year.

PATHOLOGY.—The number of deaths at Regent's Park investigated by post-mortem examination during 1942 was 355 (90 mammalian, 254 avian and 11 reptilian). At Whipsnade Park the number was 137 (92 mammalian and 45 avian).

PROSECTORIUM.—This department continues its investigations in animal pathology and parasitology and to supply institutions with zoological material which is now difficult to obtain elsewhere.

WAR UTILITY EXHIBITION, ETC.—To stimulate further interest in the Gardens, to help our aim of providing recreation and relaxation, and to

assist in the important national work of increasing the country's food supply, the scope of the War Utility Exhibition was, under the auspices of the Ministries of Agriculture, Food and Information, greatly extended during the 1942 season. The Exhibition demonstrated war-time methods of keeping pigs, poultry, goats, bees, etc., together with model vegetable gardens, the utilisation of by-products, prevention of waste, and vegetable and fruit preserving. Other sections of the Exhibition dealt with plant diseases, harmful and beneficial insects and the destruction of vermin. A large marquee with a seating capacity of 500 was used as a cinema and lecture hall and for several important conferences connected with home food production. Special Poultry, Rabbit and Egg Shows were arranged and the Committee of the Red Cross Agricultural Fund held two Poultry Auctions, at which over £2,000 was raised for the Red Cross Funds.

FARMING AT WHIPSNAD.—The year 1942 was a good one for agricultural work, particularly for cereals and roots, the potato crop being exceptionally good.

REQUISITIONED PROPERTY.—Parts of two buildings at Whipnade, known respectively as the House of Pleasant Bread and the Bothy, together with a wooden hut, were requisitioned by the Government during the year.

FINANCE.

INCOME AND EXPENDITURE.

- (a) **REGENT'S PARK. Income.**—The income amounted to £107,540, an increase of £57,828.
- (b) **REGENT'S PARK. Expenditure.**—The expenditure amounted to £64,614, an increase of £2,529.
- (c) **Excess of Income over Expenditure.**—There was thus an excess of income over expenditure of £42,926.
- (d) **WHIPSNAD PARK. Income.**—The income amounted to £8,218, a decrease of £8,598.
- (e) **WHIPSNAD PARK. Expenditure.**—The expenditure amounted to £17,810, an increase of £610.
- (f) **Excess of Expenditure over Income.**—There was thus an excess of expenditure over income of £9,592.

ASSETS.—At the end of the year the total Assets of the Society amounted to £262,981, an increase of £34,480 on the corresponding figure for 1941. The Assets do not include the de Arroyave Fund.

LIABILITIES.—The liabilities amounted to £43,354, a decrease of £237 on the corresponding figures for 1941.

BALANCE.—The balance, a surplus of assets over liabilities, amounted to £219,627, an increase of £34,717 on the corresponding figure for 1941.

Signed (for the Council),
SHEFFIELD A. NEAVE,
Secretary.

Zoological Society of London,
Regent's Park,
London, N.W.8.

17th March, 1943.

REPORT OF THE AUDITORS OF THE ACCOUNTS
OF THE
ZOOLOGICAL SOCIETY
OF LONDON

To the Council and Fellows,
The Zoological Society of London,
Regent's Park, N.W.8.

In accordance with Chapter VIII of the By-laws, we hereby certify that we have audited the Accounts of the Society for the year ended 31st December, 1942, as shown by our certificate attached to the accompanying Accounts. We report to the Society that at that date the total Assets amounted to £262,981, and the Liabilities to £43,354, showing a surplus of Assets over Liabilities amounting to £219,627, subject to the estimated values of some of the Assets. The Cash in the Bankers' hands and at the Office amounted to £26,940.

(Signed) W. B. KEEN & Co.,
Chartered Accountants.

224, Regent Street, London, W.1.
25th February, 1943.

BALANCE SHEET, 31st DECEMBER, 1942.

Comp. Figures, 1941.	LIABILITIES.			
£	£	£	£	£
6,776	Sundry Creditors—			
	Provisions, Materials and General Expenses			6,704
	Reserves and Suspense Accounts—			
259	Receipts in Advance (Subscriptions, etc.)		448	
1,168	"Zoological Record"—Reserve for Cost (see page 17)		787	
	"Nomenclator Zoologicus" Suspense Account—			
	Balance at 1st January, 1942	403		
	Add Proportion of subscriptions received during year due to Syndicate	76		
		£ 479		
	Deduct Storage Rent	1		
	Transfer to Income and Expenditure Account (see page 10)	8		
		9		
403	Pensions Fund—		470	
	Balance at 1st January, 1942	12,125		
	Add Transfer of Fees of deceased Compounders	210		
12,125			12,335	
	Depreciation of Investments Reserve Fund—			
3,000	Balance at 1st January, 1942		*3,000	
	Heer Bequest—			
80	Legacy received from the late Madame Berthe Heer		80	
			17,120	
	Loan and Mortgage Accounts—			
	Drummond's Branch, Royal Bank of Scotland—Loan Balances at 1st January, 1942—			
11,550	Regent's Park Catering Department Building	11,550		
3,760	Art Studio Building	3,760		
970	Purchase of Land and Premises at Whipnade	970		
			16,280	
	Mortgage on Quarantine Station, Gloucester Gate—			
	Balance at 1st January, 1942	3,500		
	Deduct Amount repaid during year	250		
3,500			3,250	
			19,530	
43,591			43,354	
	Balance being Excess of Assets over Liabilities—			
	Composition Fund—			
	Balance at 1st January, 1942	19,545		
	Add Fees received during year	405		
		19,950		
	Deduct Transfer to Pensions Fund—Fees of deceased Compounders	210		
19,545			19,740	
	Animals Purchase and Insurance Fund—			
	Balance at 1st January, 1942	£ 2,476		
	Add Interest on Investments	55		
	War Damage Compensation	97		
2,476		152		
			2,628	
65,612	Carried forward	22,368	43,354	

* The Market Value of the Securities held on 31st December, 1942, at minimum Stock Exchange quotations was £62,549, showing a Depreciation of £719 on original cost.

Comp. Figures, 1941.	ASSETS.			
£	£	£	£	£
	Freehold Property, Whipnade Park—			
	Cost of Land and Buildings, Enclosures, etc., including Redemption of Land Tax and Tithes at 1st January, 1942	82,630		
	Deduct Amount borrowed from Composition Fund (see page 9)	12,094		
70,536			70,536	
	Leasehold Property, Quarantine Station, Gloucester Gate—			
	Balance at 1st January, 1942	3,500		
	Deduct Amount written off transferred to Income and Expenditure Account (see page 11)	250		
3,500			3,250	
	Plant, Fittings and Furniture—			
	In Buildings and Enclosures at Regent's Park and Whipnade Park (not valued)		3,122	
	In Catering Departments			*3,122
3,122				
	Stock Accounts—			
29,889	Animals belonging to the Society	*30,877		
35,000	Books in Library	*35,000		
1,000	Publications and "Zoological Record"	*1,000		
306	Guides, Post Cards, Films, and Souvenirs, etc. (at cost)	781		
262	Electrical Sundries (at cost)	249		
5,980	Catering Departments—Provisions, etc. (at cost)	7,006		
1,926	Farm and Garden: Crops, Implements, etc. (Whipnade)	*2,223		
—	Pigs (London and Whipnade)	*145		
			77,281	
	Sundry Debtors—			
2,528	Miscellaneous Accounts since received or considered good		5,215	
	Suspense Accounts—			
1,150	Rates, Insurances, etc., paid in advance		1,239	
44	"Zoological Record" Compilation Fees, etc., paid in respect of Vol. 79, not yet published		35	
			—	1,274
155,243	Carried forward			160,678

* As per valuations by Society's Officials.

BALANCE SHEET 31st DECEMBER, 1942.

LIABILITIES.		£	£	£
Comp. Figures, 1941.				
£	Brought forward
65,612			22,368	43,354
	Balance being Excess of Assets over Liabilities— <i>continued</i> —			
	Aquarium Reserve Fund—			
11,089	Balance at 1st January, 1942	...	11,089	
	Staff Compensation Fund—			
50	Balance at 1st January, 1942	...	50	
	Catering Departments Equipment and Repairs Stabilisation Fund—			
5,306	Balance at 1st January, 1942	...	5,306	
	Add War Damage Compensation	...	48	
	Elephant House Re-building Fund—			
1,296	Balance at 1st January, 1942	...	1,296	
	General Purposes Account—			
	Balance at 1st January, 1942	...	145,148	
	Add Net increase in value of Animals	...	988	
			146,136	
	Add Excess of Income over Expenditure during year (see page 15)	...	33,334	
145,148			179,470	219,627

Note.—Owing to the war, adjustments will be required at a future date in respect of certain of the Accounts included above.

£228,501

£262,981

£228,501

£262,981

ASSETS.		£	£
Comp. Figures, 1941.			
£	Brought forward	...	160,678
155,243			
	Investments (at cost)—		
	Pensions Fund—		
	£11,937 13s. 5d. Conversion 2½ per cent. Stock	...	12,331
	£5 8s. 11d. Consolidated 2½ per cent. Stock	...	4
12,125			12,335
	Depreciation of Investments Reserve Fund—		
	£2,254 14s. 4d. Conversion 2½ per cent. Stock	...	2,334
	£665 2½ per cent. National War Bonds, 1949/51	...	665
2,334			2,999
	Heer Bequest—		
80	£90 8s. 10d. Local Loans 3 per cent. Stock	...	80
	Composition Fund—		
	Whipsnade Park (Part Purchase Price) (see page 7)	...	12,094
	£7,271 12s. 9d. Conversion 2½ per cent. Stock	...	7,425
	£158 0s. 9d. Consolidated 2½ per cent. Stock	...	131
19,545			19,650
	Animals Purchase and Insurance Fund—		
	£2,216 11s. 5d. Conversion 2½ per cent. Stock	...	2,309
	£260 2½ per cent. National War Bonds, 1949/51	...	260
2,309			2,569
	Aquarium Reserve Fund—		
11,079	£10,763 1s. 1d. Conversion 2½ per cent. Stock	...	11,079
	Catering Departments—Equipment and Repairs Stabilisation Fund—		
	£3,261 1s. 6d. Conversion 2½ per cent. Stock	...	3,276
	£288 16s. 10d. Funding 3 per cent. Stock	...	300
	£1,730 2½ per cent. National War Bonds, 1949/51	...	1,730
3,576			5,306
	Staff Compensation Fund—		
50	£50 13s. 7d. Conversion 2½ per cent. Stock	...	50
	Elephant House Rebuilding Fund—		
—	£1,295 2½ per cent. National War Bonds, 1949/51	...	1,295
	General Purposes Account—		
—	£20,000 2½ per cent. National War Bonds, 1949/51	...	20,000
			75,363
	Cash at Bank and in Office—		
	Deposit and Current Accounts—		
	General Account	...	12,518
	Do. War Emergency Donations...	...	6,190
			18,708
	Catering Departments—		
18,291	General Account	...	8,023
1,730	Equipment and Repairs Stabilisation Fund...	...	48
1,296	Elephant House Re-building Fund	...	1
167	Animals Purchase and Insurance Fund	...	59
666	Depreciation of Investments Reserve Fund	...	1
10	Aquarium Reserve Fund	...	10
—	Composition Fund	...	90
			*26,940

*£25,000 on Deposit Account.

INCOME AND EXPENDITURE ACCOUNT.

FOR THE YEAR ENDED 31ST DECEMBER, 1942.

Comp. Figures, 1941.	INCOME.		£	£
£	REGENT'S PARK.		£	£
	FELLOWS.			
10	Admission Fees, Arrears of	...	—	
17,189	Subscriptions	...	16,383	
—	Ivory Ticket...	...	10	
				16,393
	GARDENS.			
17,020	Admission of Visitors to Gardens	...	57,063	
2	Photographers', Artists' and Students' Permits	...	4	
8	Cinematograph Film Permits	...	21	
413	Riding Receipts	...	1,448	
35	Automatic Feeding and Exhibit Machines—Receipts	...	90	
140	Bath and Push Chairs, Hire of	...	437	
24	Animals, etc., Sale of	...	134	
33	Prosectorium Specimens, Sale of	...	64	
373	Zoo Shop: Sale of Photographic Films, Souvenirs, Books, etc.	...	193	
	Art Studio—			
500	Grants for the Year	...	500	
1,114	Rents Receivable	...	2,692	
—	Pigs, Sale of	...	607	
				63,253
36,861				79,646
	LIBRARY, PUBLICATIONS, ETC.			
	"Zoological Record"—			
	Subscriptions and Sales—			
7	Vols. 1-58	...	6	
	"Nomenclator Zoologicus"—			
	Society's proportion of Subscriptions	...	£7	
	Commission—Transfer from "Nomenclator Zoologicus" Suspense Account (see page 6)	...	8	
65	Scientific Publications—		15	
596	Subscriptions and Sales	...	614	
1,042	Official Guides, Sale of	...	942	
814	Picture Post Cards, Sale of	...	526	
150	do. Income from Advertisements	...	—	
184	Animal Wheel, Sale of	...	59	
—	"Advice on Pets," Sale of	...	4	
—	Library Photographs, Copyright Fees	...	10	
				2,176
	INTEREST.			
525	Investments and Bank Deposit	...	514	
269	do. Aquarium Reserve Fund	...	269	
				783
40,513	Carried forward	...		82,605

Comp. Figures, 1941.	EXPENDITURE.		£	£
£	REGENT'S PARK.		£	£
	GARDENS.			
3,525	Rent, Rates and Insurance	...	3,323	
16,952	Salaries—Menagerie Staff and Keepers	...	20,017	
22	Animals, Cost and Carriage of	...	196	
9,377	Provisions	...	8,595	
7,605	Menagerie Maintenance—Fuel, Light, Water, Cleaning, Utensils, Transport and Other Expenses	...	7,668	
	Prosectorium Expenses—			
1,157	Salaries, Wages, Chemicals, Apparatus, etc.	...	1,266	
	Gardeners' Expenses—			
1,051	Salaries, Wages, Seeds, Plants, Implements, etc.	...	1,146	
	Menagerie Staff Residential Quarters (House, Lodge, etc.)—			
323	Fuel, Light, Wages, etc.	...	347	
	Works and Electrical Departments—			
5,014	Salaries, Wages, Materials and Sundries	...	5,120	
	Less War Damage repaid on Account	...	800	
				4,320
180	Advertising	...	306	
	Zoo Shop—			
	Salaries, Wages, Equipment, Stationery, Photographic Films, Souvenirs, Books, etc.	...	146	
313	Leasehold Property (Quarantine Station), Amount written off (see page 7)	...	250	
250	War Utility Exhibition, Cost of	...	58	
53	Pigkeeping Expenses	...	316	
				47,954
45,822				
	LIBRARY, PUBLICATIONS, ETC.			
	Library—			
	£605 Salaries, Wages, Books and Binding, etc.	...	£644	
	500 Deduct Grant received	...	—	
105			644	
	"Nomenclator Zoologicus"—			
2	Postages, etc.	...	—	
	£1,060 Scientific Publications, Cost of	...	£792	
	650 Deduct Grants received	...	670	
410			122	
300	Official Guides, Cost of—Printing, etc.	...	330	
234	Picture Post Cards, Cost of—Printing, Maintenance of Machines, etc.	...	216	
				1,312
	SCIENTIFIC GRANTS AND MEDALS.			
£3	Grants paid	...	3	
	Deduct Transfer from De Arroyave Trust Fund (see page 17)	...	3	
3			—	
	Carried forward	...		49,266
46,873				

INCOME AND EXPENDITURE ACCOUNT—continued.
FOR THE YEAR ENDED 31ST DECEMBER, 1942.

Comp. Figures, 1941.	<i>INCOME.</i>			
£	<u>REGENT'S PARK.</u>			
40,513	Brought forward	82,605
DONATIONS, LEGACIES AND MISCELLANEOUS.				
Donations—				
	General	£6
	do. War Emergency	610
	do. Seven-Year Covenants	910
	Adoption Scheme	3,170
	do. Seven-Year Covenants	224
4,187				4,920
2,905	De Arroyave Trust Fund—Balance of Income (see page 17)	2,915
52	Miscellaneous Receipts	6
				7,841
<u>£47,657</u>				<u>£90,446</u>
CATERING DEPARTMENT, REGENT'S PARK.				
	Profit	14,892
	Rent of Department and Lavatories	2,422
				17,314
	Deduct Cost of Repairs, Alterations, etc., carried out by Works Department	220
2,055				17,094
<u>£49,712</u>	Total Income, Regent's Park (see page 14)	<u>£107,540</u>
WHIPSNAD PARK.				
GARDENS.				
9,977	Admission of Visitors to Park	4,623
591	Do. Cars Do.	234
				4,857
Car Park—				
578	Parking Fees	240
5	Cinematograph Film Permits	—
596	Riding Receipts	133
91	Bath and Push Chairs, Hire of	60
258	Animals, etc., Sale of	130
Farm and Garden—				
1732	Sale of Produce, etc.	2,265
100	Vehicles, Sale of	7
50	Souvenirs, etc., Sale of	—
—	Pigs, Sale of	153
—	Rents Receivable	38
				7,883
<u>13,978</u>				<u>7,883</u>
<u>13,978</u>	Carried forward	<u>7,883</u>

Comp. Figures, 1941.	<i>EXPENDITURE.</i>			
£	<u>REGENT'S PARK.</u>			
46,873	Brought forward	49,266
ADMINISTRATION.				
6,239	Salaries, Office	5,273
	House and Office Expenses, Wages of Housekeeper and Cleaners, Fuel, Light, Telephones, Postages, Rates, Insurance, Water, Fittings, Furniture, Office Appliances, etc., House Requisites, Cleaning, etc., Travelling and Sundry Expenses	2,106
2,033	Stationery and Printing (General)	791
574	Law Expenses and Compensation	36
45	Annual General Meeting, 1942—Contested Election Expenses	565
				8,771
PENSIONS.				
	£6,065 Pensions Paid	6,334
	280 Deduct Interest on Pensions Fund Investment	293
5,785				6,041
INTEREST.				
	Regent's Park Catering Department Loan	404
	Art Studio Loan	132
536				536
<u>£62,085</u>	Total Expenditure, Regent's Park (see page 15)	<u>£64,614</u>
WHIPSNAD PARK.				
GARDENS.				
1,115	Rent, Rates and Insurance	1,213
5,868	Salaries, Menagerie Staff, Keepers, etc.	6,481
11	Animals, Cost and Carriage of	—
3,729	Provisions	3,343
	Menagerie Maintenance—Fuel, Light, Water, Cleaning, Utensils, Transport and Other Expenses	911
1,013	Works and Electrical Departments—			
1,225	Salaries, Wages, Materials and Sundries	1,405
	Farm and Garden—			
2,292	Salaries, Wages, Seeds, Plants, Implements, etc.	2,009
38	Pigkeeping Expenses	72
28	Souvenirs, etc., Cost of	—
15,319				15,434
PUBLICATIONS, ETC.				
342	Official Guides, Cost of—Printing, etc.	101
72	Picture Post Cards, Cost of—Printing, Maintenance of Machines	16
				117
<u>15,733</u>	Total Maintenance, Carried forward	<u>15,551</u>

INCOME AND EXPENDITURE ACCOUNT—continued.
FOR THE YEAR ENDED 31ST DECEMBER, 1942.

Comp. Figures, 1941.	INCOME.						£
£	<u>WHIPSNADÉ PARK.</u>						£
13,978	Brought forward	7,883
PUBLICATIONS, ETC.							
379	Official Guides, Sale of	114
379	Picture Post Cards, Sale of	78
							192
ESTATE OFFICE, BOTHY, COTTAGES, ETC.							
52	Rents Receivable	52
44	Subsidy under Housing (Financial Provisions) Act 1924 re Cottages	44
81	Miscellaneous Receipts	47
							143
14,913							8,218
CATERING DEPARTMENT, WHIPSNADÉ PARK. } See Contra page 15.							
1903	Profit						
16,816	Total Income, Whipsnade Park	8,218
49,712	Total Income, Regent's Park (see page 12)	107,540
66,528							115,758
12,757	Balance, being Excess of Expenditure over Income for the Year, carried to Balance Sheet						
<u>£79,285</u>							<u>£115,758</u>

Comp. Figures, 1941.	EXPENDITURE.						£	£
£	<u>WHIPSNADÉ PARK.</u>						£	£
15,733	Brought forward	15,551	
ESTATE OFFICE, BOTHY, COTTAGES, ETC.								
374	Fuel, Light, Wages, Refreshments, Telephones, Cleaning, Post-ages, Fittings and Furniture, etc.	346	
42	Stationery and Printing (General)	16	
55	Income Tax (Schedule A)	57	
							419	
INTEREST.								
34	Purchase of Land and Premises—Loan	34	
16,238							16,004	
CATERING DEPARTMENT, WHIPSNADÉ PARK.								
See Contra page 14.	Loss for the Year	1,955	
	Less Rent of Department and Lavatories	783	
							1,172	
	Add Cost of Repairs, Alterations, etc., carried out by Works Department	154	
							1,326	
DEVELOPMENT ACCOUNT.								
962	Improvement and Extension of County Roads— Loan Charges repaid to Bedfordshire County Council—half-year to 31st March, 1942	480	
17,200	Total Expenditure, Whipsnade Park	17,810	
62,085	Total Expenditure, Regent's Park (see page 13)	64,614	
79,285							82,424	
	Balance, being Excess of Income over Expenditure for the year, carried to Balance Sheet (see page 8)	33,334	
<u>£79,285</u>							<u>£115,758</u>	

**INCOME AND EXPEN
FOR THE YEAR ENDED**

<u>Comp. Figures, 1941.</u>	<i>INCOME.</i>	<u>£</u>
	DE ARROYAVE	
	<i>Trustees—The Official Trustees</i>	
	<i>£103,305 7s. 9d. Funding</i>	
3,099	Interest on Investment (per Official Trustees of Charitable Funds)	3,099
<u>£3,099</u>		<u>£3,099</u>

DAVIS

£1,520 Southern Railway

76	Interest on Investment	76
<u>£76</u>		<u>£76</u>

“ ZOOLOGICAL

1,347	Balance at 1st January, 1942	1,168
1,081	Donations received during year (including transfer from Davis Fund and De Arroyave Fund (see above)	948
	Subscriptions and Sales—	
140 (59/76)	Vols. 59/77	£126
530 (77)	Vol. 78	476
		<u>602</u>
<u>£3,098</u>		<u>£2,718</u>

We hereby certify that we have audited the Books, Accounts and Vouchers of the and that the above Balance Sheet and accompanying Income and Expenditure truly set forth the position as shown by the books of the Society. We have verified explanations we have required.

224, Regent Street, London, W.1.
25th February, 1943.

DITURE ACCOUNT—continued.
31ST DECEMBER, 1942.

<u>Comp. Figures, 1941.</u>	<i>EXPENDITURE.</i>	<u>£</u>
	TRUST FUND.	
	of Charitable Funds.	
	<i>3 per cent. Stock.</i>	
3	Upkeep of the de Arroyave Grave at Highgate	3
4	Expenses re Inspection of Mausoleum at Westbury	4
10	Repairs, do.	—
		<u>7</u>
	Balance of Income appropriated to—	
174	“ Zoological Record ”—Cost of Vol. 78 (see below)	174
3	Scientific Grants—Regent’s Park (see page 11)	3
2,905	Transfer to Income and Expenditure Account (see page 12)	2,915
		<u>3,092</u>
<u>£3,099</u>		<u>£3,099</u>

TRUST FUND.

Co. 5 per cent. Preference Stock.

76	Applied towards Cost of “ Zoological Record ” (see below)	76
<u>£76</u>		<u>£76</u>

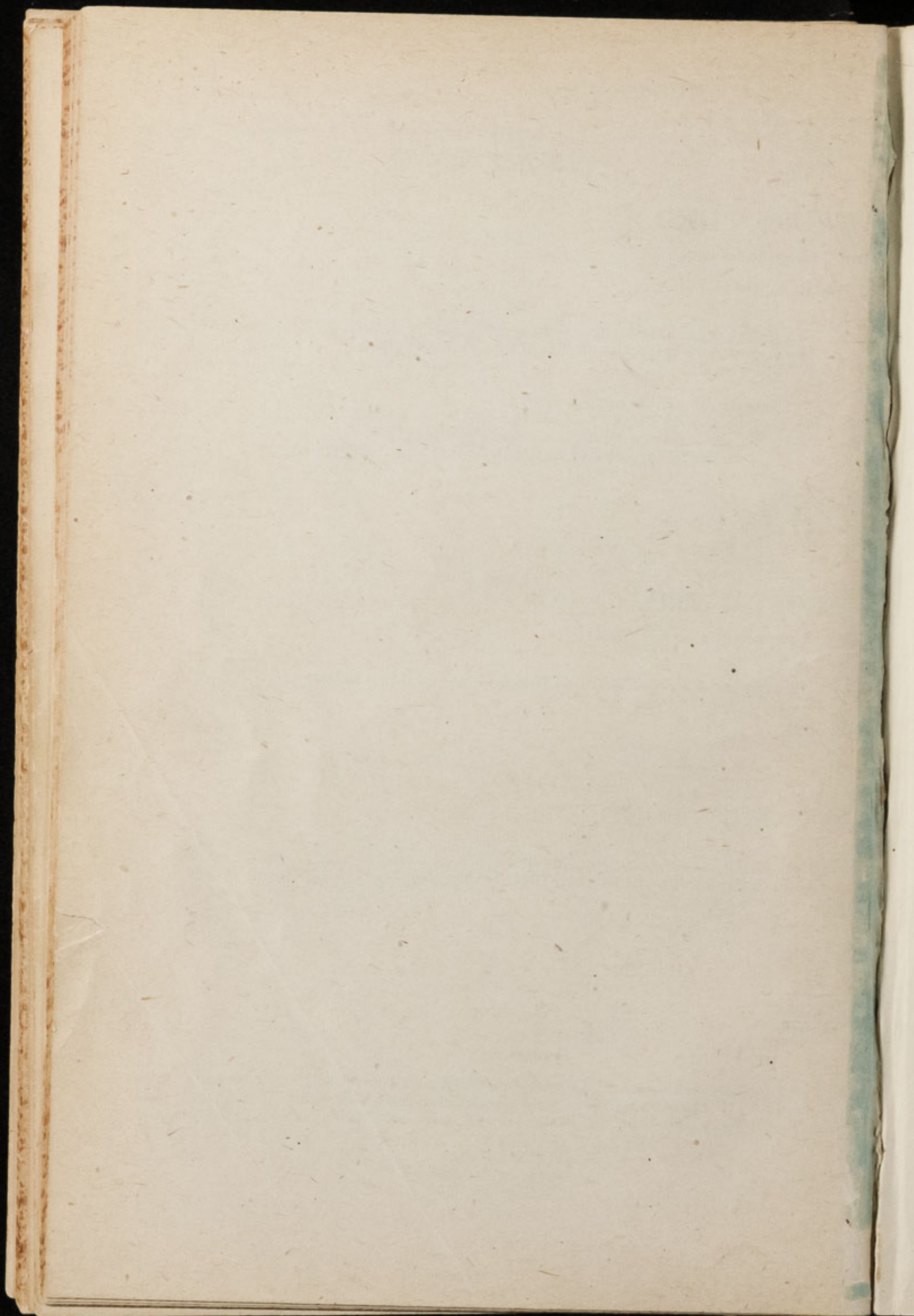
“ ZOOLOGICAL RECORD ” FUND.

1,930 (77)	Preparation and Printing of Vol. 78	1,931
1,168	Balance at 31st December, 1942 (see page 6)	787
		<u>£2,718</u>
<u>£3,098</u>		<u>£2,718</u>

ALBERT PAM,
Treasurer.

Society for the year ended 31st December, 1942, and have found them to be in order Accounts have been drawn up in strict conformity therewith and that they fully and the Investments and the Cash Balances and have received all the information and

W. B. KEEN & CO.,
Chartered Accountants.



REPORT OF THE COUNCIL

for the year ended 31st December, 1943.

The Council, in presenting its one hundred and fifteenth Annual Report, regrets that, owing to the restrictions imposed by the Paper Control of the Ministry of Supply, the Report must be confined to the accounts and a very condensed summary of activities. Consequently there are many matters which it has not been possible to include or which have been dealt with only very briefly. If any Fellow requires further information, he is invited to apply in writing to the Secretary.

ELECTION OF THE COUNCIL, OFFICERS AND THE PUBLICATIONS COMMITTEE.—In view of the fact that many Fellows find it impossible, under war-time conditions, to attend the Annual General Meetings, application was made to the Lord President of the Privy Council for a direction in pursuance of the powers conferred upon him by the Chartered and Other Bodies (Temporary Provisions) Act, 1939, authorising the Council of the Society, during the period this Act remains in force, if and when they think it expedient so to do, to determine that these elections shall be conducted by a method of postal voting to be carried out in such manner as the Council of the Society shall determine. This application was granted by the Lord President of the Privy Council on 16th February, 1943.

LIAISON COMMITTEE.—After the conclusion of the last Annual General Meeting a small gathering of Fellows decided to form a committee under the above name, to receive suggestions and criticisms on policy from the general body of Fellows and to submit those approved to the Council for consideration. The Hon. Secretary is A. H. D'Aeth, Esq. The Council has not received any constructive suggestions on policy from this Committee.

THE SOCIETY'S CONTRIBUTION TO THE WAR EFFORT.—The Society has been able to give valuable assistance to the war effort in many ways some of which cannot be disclosed for security reasons. These contributions include assisting Government Departments by extensive investigation conducted by the Society's Pathologist, placing the facilities of the Library, etc., at the disposal of official investigators and research workers and supplying information and advice of a varied and specialised nature. In addition, the Society continues to implement the Government's "Holidays at Home" policy by providing healthy relaxation (members of H.M. and Allied Forces being admitted at reduced rates); to stage at Regent's Park the War Utility Exhibition (under the auspices of the Ministries of Agriculture, Food and Information); and to farm over 150 acres of land at Whipnade.

CHANGES IN COUNCIL.—Since the last Annual General Meeting the Council has, in accordance with the provisions of the Charter, elected to its body Alfred Ezra, Esq., O.B.E., and L. Harrison Matthews, Esq., M.A., Sc.D., in place of Herbert J. Shirley, Esq., C.M.G., M.D., F.R.C.S. (died 14th May, 1943), and James Gray, Esq., M.C., Sc.D., LL.D., F.R.S. (resigned 19th May, 1943).

STAFF.—Council desires to put on record its appreciation of the devoted work of all branches of the Society's staff, who have carried on short-handed in spite of long hours and many difficulties.

Mr. E. G. Boulenger, Director of the Aquarium and Curator of Reptiles, retired on pension during the year.

APPOINTMENT OF SCIENTIFIC DIRECTOR.—In September 1943 Council appointed Dr. Edward Hindle, F.R.S., Regius Professor of Zoology at the University of Glasgow, to the post of Scientific Director as from the 1st January, 1944.

ORDINARY GENERAL MEETINGS.—Until further notice, these meetings are being held in the Meeting Room at the Society's Offices on the third Wednesday of each month (except September and October), at 4.30 p.m.

SCIENTIFIC MEETINGS.—These meetings normally held in the Meeting Room at the Society's Offices have been suspended until further notice, but arrangements have been made to hold joint meetings with the Linnean Society of London, at Burlington House, W.1. Dates and times of these meetings can be obtained on application to the Secretary.

ROLL OF FELLOWS.—The number of Fellows at 31st December, 1943, was 6,849, as compared with 6,975 at the end of 1942.

SCIENTIFIC PUBLICATIONS.—During the year complete volumes of *Proceedings*, Series A (General and Experimental), and Series B (Systematic and Morphological), were issued. Of the *Transactions*, Vol. 25, part 3 was published.

A grant of £500 was received from the Rockefeller Grant to the Royal Society towards the cost of these publications for 1943.

A welcome innovation was the publication of the following paper by Keepers in the Gardens:—"On the Birth and Upbringing of the Female Chimpanzee Jacqueline" compiled and written by First-Class Keeper Arthur Budd and Second-Class Keeper L. G. Smith from observations made by them in conjunction with First-Class Keeper F. W. Shelley (Series A, Vol. 113, pp. 1-20).

ZOOLOGICAL RECORD.—The complete volume, No. 79, dealing principally with the literature of 1942, was published on 7th March, 1944. Donations to the Zoological Record Fund received during the year (including the Society's own contribution) amounted to £1,167, as compared with £948 for 1942. After charging the Fund with the loss for the year 1943 the balance in hand at 31st December, 1943, was £1,296 as compared with £787 at the end of 1942. As, however, the amount required to finance each volume is about £2,000, further annual donations are still urgently needed. Societies, institutions and individuals who wish the *Record* to be maintained are invited to give their support in the form of annual donations to the Fund.

LIBRARY.—The majority of the books are still available in the Library, which is now the only large Zoological Library to remain open in London.

During the war the purchase of books has had to be curtailed for reasons of economy, and gifts of books to the Library will be greatly appreciated, particularly copies of Fellows' own works.

The number of volumes borrowed was 1,142 as against 794 in 1942.

Plans are in contemplation for the post-war re-organisation of the

Library and the preparation of a new catalogue, but cannot be much advanced at the present time in view of the fact that many of the more important books have been evacuated to different parts of the country.

POPULAR LECTURES.—A series of four lectures was given in July, August and September in the Society's Meeting Room, but largely owing to the prevalent transport difficulties they were not well attended, and it is not proposed to continue them for the present. The thanks of Council are due to Sir John Graham Kerr, F.R.S., M.P., John R. Norman, Esq., Martin A. C. Hinton, Esq., F.R.S., and Dr. Annie Porter, D.Sc., F.R.S.S.Af., for their kindness in giving these lectures.

VISITORS.—The number of visitors during 1943 was 1,606,516 at Regent's Park and 85,548 at Whipsnade Park. The corresponding figures for 1942 were 1,344,568 and 100,288 respectively.

AQUARIUM.—Largely owing to the efforts of the Supervisor, Mr. H. Vinall, the fresh-water hall of the Aquarium was re-opened to visitors on the 11th June, 1943, and the number of visitors from that date to the 31st December, 1943, was 363,109, the price of admission for both adults and children being 6d.

H.M. AND ALLIED FORCES.—The terms of admission of H.M. and Allied Forces to Regent's Park were amended from 1st October, 1943, to 6d. for members of the Forces every day of the week including Sundays, their civilian companions paying the full price.

BAND.—For the first time since the outbreak of the war, a band was engaged to play in the Gardens at Regent's Park on Sunday afternoons throughout the summer months. A Military Band and a Tzigane Band played on alternate Sundays.

ANIMALS IN THE COLLECTION.—The number of animals in the Collection (excluding Fish and Invertebrates) at 31st December, 1943, was 1,587 at Regent's Park and 857 at Whipsnade Park. The corresponding figures at 31st December, 1942, were 1,752 and 1,003 respectively. The number of mammals and birds bred during 1943 was 58 at Regent's Park and 218 at Whipsnade Park.

NEW SPECIES AND SUBSPECIES.—No species or subspecies new to the collection were added during the year.

DOCUMENTARY FILM AND PAINTINGS OF RARE ANIMALS.—In order to have permanent records of them, arrangements were made during the year for the making of films of some of the rarer animals in the Gardens as well as oil paintings of the Maned Wolf and the Monkey-eating Eagle.

PROSECTORIUM.—This department continues its investigations in animal pathology and parasitology and supplies institutions with zoological material which is now difficult to obtain elsewhere.

The number of deaths at Regent's Park investigated by post-mortem examination during 1943 was 375 (79 mammalian, 288 avian and 8 reptilian). At Whipsnade Park the number was 79 (39 mammalian and 40 avian).

WAR UTILITY EXHIBITION.—This exhibition continued during 1943 to demonstrate war-time methods of keeping pigs, poultry, rabbits, goats, bees, etc., together with model vegetable gardens, herb gardens, and a

modern compost exhibit. The section dealing with the utilisation of by-products, prevention of waste, plant diseases, harmful and beneficial insects and the destruction of vermin, was enlarged and transferred to a marquee on the main lawn, where lectures on home food production and other kindred subjects were given daily. Poultry, Rabbit and Egg Shows were again held in the Mappin Terrace Pavilion, and the Red Cross Agriculture Fund's Poultry Auction raised £1,800 for the British Red Cross Society.

LEGACIES.—The following legacies were received during the year: £100 from the late Mrs. Muriel Hodgson Williams, F.Z.S., £200 (on account) from the late Major Arthur Corrie Keep, M.C., M.D., F.Z.S., both without restriction as to use, and £9,000 from the late Theodore Aurelius Wall Hance, Esq., F.Z.S., bequeathed specifically for use at Whipsnade.

SEVEN-YEAR COVENANTS.—The Society having been successful in obtaining covenants amounting to over £5,000 per annum gross from other sources, the anonymous donor who had promised a further annual donation of £5,000 in this event has duly entered into a seven-year covenant for this amount, so that the total annual revenue from this source now exceeds £10,000.

ADOPTION SCHEME.—The total revenue from this scheme whereby Fellows and others adopt animals and pay for the cost of feeding (the animals remaining in the Menagerie) now exceeds £3,000 per annum.

FINANCE.

INCOME AND EXPENDITURE.

- (a) REGENT'S PARK. The income was £141,345 (an increase of £34,121), and the expenditure (including transfers to reserve funds) amounted to £127,755 (an increase of £63,457).
- (b) WHIPSNAD PARK. The income was £8,870 (an increase of £652), and the expenditure amounted to £20,446 (an increase of £2,636).

ASSETS.—At the end of the year the total Assets of the Society amounted to £333,014, an increase of £70,033 on the corresponding figure for 1942. The Assets do not include the de Arroyave Fund.

LIABILITIES.—The liabilities amounted to £44,200, an increase of £846 on the corresponding figure for 1942.

BALANCE.—The balance, a surplus of assets over liabilities, amounted to £288,814, an increase of £69,187 on the corresponding figure for 1942.

Signed (for the Council),
SHEFFIELD A. NEAVE,
Secretary.

Zoological Society of London,
Regent's Park,
London, N.W.8.

15th *March*, 1944.

REPORT OF THE AUDITORS OF THE ACCOUNTS
OF THE
ZOOLOGICAL SOCIETY
OF LONDON

To the Council and Fellows,
The Zoological Society of London,
Regent's Park, N.W.8.

In accordance with Chapter VIII of the By-laws, we hereby certify that we have audited the Accounts of the Society for the year ended 31st December, 1943, as shown by our certificate attached to the accompanying Accounts. We report to the Society that at that date the total Assets amounted to £333,014, and the Liabilities to £44,200, showing a surplus of Assets over Liabilities amounting to £288,814, subject to the estimated values of some of the Assets. The Cash in the Bankers' hands and at the Office amounted to £28,407.

(Signed) W. B. KEEN & Co.,
Chartered Accountants.

224, Regent Street, London, W.1.
23rd February, 1944.

BALANCE SHEET, 31st DECEMBER, 1943.

Comp. Figures, 1942.	LIABILITIES.		
£	£	£	£
6,704	Sundry Creditors—		
	Provisions, Materials and General Expenses		6,602
	Reserves and Suspense Accounts—		
448	Receipts in Advance (Subscriptions, etc.)	475	
	Contribution for Staff Sick Benefits	50	
787	“Zoological Record”—Reserve for Cost (see page 17)	1,296	
	“Nomenclator Zoologicus” Suspense Account—		
	Balance at 1st January, 1943	470	
	Proportion of subscriptions received during year		
	due to Syndicate	72	
470	Pensions Fund—		542
	Balance at 1st January, 1943	12,335	
	Add Transfer of Fees of deceased Compounders	540	
12,335	Depreciation of Investments Reserve Fund—		12,875
	Balance at 1st January, 1943	*3,000	
3,000	Heer Bequest—		
80	Legacy received from the late Madame Berthe Heer	80	
	Loan and Mortgage Accounts—		18,318
	Drummond's Branch, Royal Bank of Scotland—Loan		
	Balances at 1st January, 1943—		
11,550	Regent's Park Catering Department Building	11,550	
3,760	Art Studio Building	3,760	
970	Purchase of Land and Premises at Whipsnade	970	
			16,280
	Mortgage on Quarantine Station, Gloucester Gate—		
	Balance at 1st January, 1943	3,250	
	Deduct Amount repaid during year	250	
3,250			3,000
			19,280
43,354			44,200
	Balance being Excess of Assets over Liabilities—		
	Composition Fund—		
	Balance at 1st January, 1943	19,740	
	Add Fees received during year	870	
			20,610
	Deduct Transfer to Pensions Fund—Fees of deceased		
	Compounders	540	
19,740			20,070
	Animals Purchase and Insurance Fund—		
	Balance at 1st January, 1943	2,628	
	Add Interest on Investments	58	
2,628			2,686
65,722	Carried forward	22,756	44,200

* The Market Value of the Securities held on 31st December, 1943, at minimum Stock Exchange quotations was £134,850, showing a Depreciation of £454 on original cost.

Comp. Figures, 1942.	ASSETS.		
£	£	£	£
	Freehold Property, Whipsnade Park—		
	Cost of Land and Buildings, Enclosures, etc., including Redemption of Land Tax and Tithes at 1st January, 1943	82,630	
	Add Repurchase of Land	10	
			82,640
	Deduct Amount borrowed from Composition Fund (see page 9)	12,094	
70,536			70,546
	Leasehold Property, Quarantine Station, Gloucester Gate—		
	Balance at 1st January, 1943	3,250	
	Deduct Amount written off transferred to Income and Expenditure Account (see page 11)	250	
3,250			3,000
	Plant, Fittings and Furniture—		
	In Buildings and Enclosures at Regent's Park and Whipsnade Park (not valued)	—	
	In Catering Departments	3,122	
3,122			*3,122
	Stock Accounts—		
30,877	Animals belonging to the Society	*31,350	
35,000	Books in Library	*35,000	
1,000	Publications and “Zoological Record”	*1,000	
781	Guides, Post Cards, Films, and Souvenirs, etc. (at cost)	450	
249	Electrical Sundries (at cost)	237	
7,006	Catering Departments—Provisions, etc. (at cost)	6,575	
2,223	Farm and Garden: Crops, Implements, etc. (Whipsnade)	*1,898	
145	Pigs (Whipsnade)	*25	
			76,535
	Sundry Debtors—		
5,215	Miscellaneous Accounts since received or considered good		2,648
	Suspense Accounts—		
1,239	Rates, Insurances, etc., paid in advance	1,332	
35	“Zoological Record” Compilation Fees, etc., paid in respect of Vol. 80, not yet published	26	
			1,358
	Note.—Owing to the war, adjustments will be required at a future date in respect of certain of the Accounts included above.		
160,678	Carried forward		157,209

* As per valuations by Society's Officials.

Comp. Figures, 1942.	LIABILITIES.			
£	£	£	£	£
65,722	Brought forward	22,756
	Balance being Excess of Assets over Liabilities— <i>continued</i> —			
	Aquarium Reserve Fund—			
11,089	Balance at 1st January, 1943	11,089
	Catering Departments Equipment and Repairs Stabilisation Fund—			
5,354	Balance at 1st January, 1943	5,354
	Add Sale of Requisitioned Equipment	2,312
				7,666
	Staff Compensation Fund—			
50	Balance at 1st January, 1943	50
	Elephant House Re-building Fund—			
1,296	Balance at 1st January, 1943	1,296
	Hance Bequest—			
	Legacy from the late T. A. W. Hance, F.Z.S.	9,000
	War Emergency Fund—			
	Amount transferred from General Purposes Account	20,000
	Amount transferred from Income and Expenditure Account (see p. 13)	55,000
				75,000
	General Purposes Account—			
	Balance at 1st January, 1943	179,470
	Add Net increase in value of Animals	473
				179,943
	Deduct Transfer to War Emergency Fund	20,000
				159,943
	Add Excess of Income over Expenditure during year (see page 15)	2,014
179,470				161,957
				288,814
				<u>£333,014</u>
				<u>£262,981</u>

Comp. Figures, 1942.	ASSETS.			
£	£	£	£	£
160,678	Brought forward	157,209
	Investments (at cost)—			
	Pensions Fund—			
	£12,399 6s. 11d. Conversion 2½ per cent. Stock	...	12,814	
	£89 4s. 10d. Consolidated 2½ per cent. Stock	...	61	
12,335				12,875
	Depreciation of Investments Reserve Fund—			
	£2,254 14s. 4d. Conversion 2½ per cent. Stock	...	2,334	
	£665 2½ per cent. National War Bonds, 1949/51	...	665	
2,999				2,999
	Heer Bequest—			
80	£90 8s. 10d. Local Loans 3 per cent. Stock	80
	Composition Fund—			
	Whipsnade Park (Part Purchase Price) (see page 7)	...	12,094	
	£6,809 19s. 3d. Conversion 2½ per cent. Stock	...	6,942	
	£973 17s. 7d. Consolidated 2½ per cent. Stock	...	809	
19,650				19,845
	Animals Purchase and Insurance Fund—			
	£2,216 11s. 5d. Conversion 2½ per cent. Stock	...	2,309	
	£260 2½ per cent. National War Bonds, 1949/51	...	260	
2,569				2,569
	Aquarium Reserve Fund—			
11,079	£10,763 1s. 1d. Conversion 2½ per cent. Stock	11,079
	Catering Departments—Equipment and Repairs Stabilisation Fund—			
	£3,261 1s. 6d. Conversion 2½ per cent. Stock	...	3,276	
	£288 16s. 10d. Funding 3 per cent. Stock	...	300	
	£1,730 2½ per cent. National War Bonds, 1949/51	...	1,730	
	£2,300 Do. 1952/54	...	2,300	
5,306				7,606
	Staff Compensation Fund—			
50	£50 13s. 7d. Conversion 2½ per cent. Stock	50
	Elephant House Rebuilding Fund—			
1,295	£1,295 2½ per cent. National War Bonds, 1949/51	1,295
	Hance Bequest—			
	£9,000 2½ per cent. National War Bonds, 1952/54	9,000
	War Emergency Fund—			
	£20,000 2½ per cent. National War Bonds, 1949/51	...	20,000	
	£55,000 2½ per cent. National War Bonds, 1952/54	...	55,000	
				75,000
	General Purposes Account—			
20,000	£5,000 2½ per cent. National War Bonds, 1952/54	5,000
				147,398
	Cash at Bank and in Office—			
	Deposit and Current Accounts—			
18,708	General Account	24,087
	Catering Departments—			
8,023	General Account	3,906
48	Equipment and Repairs Stabilisation Fund	60
1	Elephant House Rebuilding Fund	1
59	Animals Purchase and Insurance Fund	117
1	Depreciation of Investments Reserve Fund	1
10	Aquarium Reserve Fund	10
90	Composition Fund	225
				*28,407
				<u>£333,014</u>
				<u>£262,981</u>

*£20,000 on Deposit Account.

INCOME AND EXPENDITURE ACCOUNT.

FOR THE YEAR ENDED 31ST DECEMBER, 1943.

Comp. Figures, 1942.	INCOME.		£	£
£	REGENT'S PARK.		£	£
	FELLOWS.			
—	Admission Fees, from 1st October, 1943	...	70	
16,383	Subscriptions	...	16,309	
10	Ivory Ticket...	...	—	16,379
	GARDENS.			
57,063	Admission of Visitors to Gardens	...	76,061	
—	do. do. to Aquarium	...	9,024	
4	Photographers', Artists' and Students' Permits	...	5	
21	Cinematograph Film Permits	...	34	
1,448	Riding Receipts	...	1,736	
90	Automatic Exhibit Machines—Receipts	...	139	
437	Bath and Push Chairs, Hire of	...	475	
134	Animals, etc., Sale of	...	100	
64	Prosectorium Specimens, Sale of	...	96	
193	Souvenirs, Books, etc., Sale of	...	647	
	Art Studio—			
500	Grants for the Year	...	500	
2,692	Rents Receivable	...	2,081	
291	Pig-keeping—Net Proceeds	...	240	
			91,138	
79,330			107,517	
	LIBRARY, PUBLICATIONS, ETC.			
	"Zoological Record"—			
	Subscriptions and Sales—			
6	Vols. 1-58 (see also p. 16)	...	20	
15	"Nomenclator Zoologicus"—			
	Society's proportion of Subscriptions, etc.	...	17	
	Scientific Publications—			
614	Subscriptions and Sales	...	849	
942	Official Guides, Sale of	...	1,505	
526	Picture Post Cards, Sale of	...	280	
59	Animal Wheel, Sale of	...	—	
4	"Advice on Pets," Sale of	...	1	
10	Library Photographs, Copyright Fees	...	30	
			2,702	
	INTEREST.			
514	Investments and Bank Deposit	...	924	
269	do. Aquarium Reserve Fund	...	269	
			1,193	
82,289	Carried forward	...	111,412	

Comp. Figures, 1942.	EXPENDITURE.		£	£
£	REGENT'S PARK.		£	£
	GARDENS.			
3,323	Rent, Rates and Insurance	...	3,761	
20,017	Salaries—Menagerie Staff and Keepers	...	21,119	
196	Animals, Cost and Carriage of	...	6	
8,595	Provisions	...	10,068	
7,668	Menagerie Maintenance—Fuel, Light, Water, Cleaning, Utensils, Transport and Other Expenses	...	7,741	
1,266	Prosectorium Expenses—			
	Salaries, Wages, Chemicals, Apparatus, etc.	...	1,306	
1,146	Gardeners' Expenses—			
	Salaries, Wages, Seeds, Plants, Implements, etc.	...	1,269	
347	Menagerie Staff Residential Quarters (House, Lodge, etc.)—			
	Fuel, Light, Wages, etc.	...	314	
—	Aquarium Maintenance—			
	Salaries, Wages, Exhibits, Provisions, Fuel, Light, and Other Expenses	...	1,803	
	Works and Electrical Departments—			
	5,120 Salaries, Wages, Materials and Sundries	...	6,516	
	800 Less War Damage repaid on Account	...	654	
4,320			5,862	
306	Advertising	...	930	
—	Band Expenses	...	620	
146	Souvenirs, Books, etc., Cost of	...	490	
250	Leasehold Property (Quarantine Station), Amount written off (see page 7)	...	250	
58	War Utility Exhibition, Cost of	...	161	
47,638			55,700	
	LIBRARY, PUBLICATIONS, ETC.			
	Library—			
644	Salaries, Wages, Books and Binding, etc.	...	843	
—	"Nomenclator Zoologicus"—			
	Postages, etc.	...	1	
	£792 Scientific Publications, Cost of	...	£1,275	
	670 Deduct Grants received	...	500	
122			775	
330	Official Guides, Cost of—Printing, etc.	...	472	
216	Picture Post Cards, Cost of—Printing, Maintenance of Machines, etc.	...	83	
			2,174	
	SCIENTIFIC GRANTS AND MEDALS.			
£3	Grants paid	...	3	
3	Deduct Transfer from de Arroyave Trust Fund (see page 17)	...	3	
—			—	
	Medals, cost of	...	14	
48,950	Carried forward	...	57,888	

INCOME AND EXPENDITURE ACCOUNT—continued.
FOR THE YEAR ENDED 31ST DECEMBER, 1943.

13

Comp. Figures, 1942.	INCOME.			
£	REGENT'S PARK.			
82,289	Brought forward	111,412
	DONATIONS, LEGACIES AND MISCELLANEOUS.			
	Donations—			
	General	£6
	do. War Emergency	678
	do. Seven-Year Covenants	9,957
	Adoption Scheme	2,911
4,920	do. Seven-Year Covenants	237
	Legacies—			
	From the late Major A. Corrie Keep	£200
	Do. Mrs. M. H. Williams	100
	13,789			
2,915	de Arroyave Trust Fund—Balance of Income (see page 17)	300
6	Miscellaneous Receipts	2,911
	2			
	17,002			
90,130	128,414			
	CATERING DEPARTMENT, REGENT'S PARK.			
	Profit	10,704
	Rent of Department and Lavatories	2,520
	13,224			
	Deduct Cost of Repairs, Alterations, etc., carried out by Works Department			
	293
17,094	12,931			
£107,224	Total Income, Regent's Park (see page 14)	£141,345
	WHIPSDADE PARK.			
	GARDENS.			
4,623	Admission of Visitors to Park	4,591
234	Do. Cars	8
	4,599			
	Car Park—			
240	Parking Fees	121
—	Cinematograph Film Permits	1
133	Riding Receipts	113
60	Bath and Push Chairs, Hire of	65
130	Animals, etc., Sale of	337
	Farm and Garden—			
2,265	Sale of Produce, etc.	2,710
7	Vehicles, Sale of	—
153	Pigs, Sale of	277
38	Rents Receivable	211
	8,434			
7,883	8,434			
7,883	Carried forward	8,434

Comp. Figures, 1942.	EXPENDITURE.			
£	REGENT'S PARK.			
48,950	Brought forward	57,888
	ADMINISTRATION.			
5,273	Salaries, Office	4,510
	House and Office Expenses, Wages of Housekeeper and Cleaners, Fuel, Light, Telephones, Postages, Rates, Insurance, Water, Fittings, Furniture, Office Appliances, etc., House Requisites, Cleaning, etc., Travelling and Sundry Expenses			
2,106	Stationery and Printing (General)	2,263
791	Legal Expenses	905
36	Annual General Meeting, 1943—Contested Election Expenses	133
565	Composition Fees paid by Society	—
	7,946			
	PENSIONS.			
	£6,334 Pensions Paid	6,684
	293 Deduct Interest on Pensions Fund Investment	299
6,041	6,385			
	INTEREST.			
	Regent's Park Catering Department Loan	404
	Art Studio Loan	132
	536			
64,298	Total Maintenance, Regent's Park	72,755
	Transfer to War Emergency Fund (see p. 8)	55,000
£64,298	Total Expenditure, Regent's Park (see page 15)	£127,755
	WHIPSDADE PARK.			
	GARDENS.			
1,213	Rent, Rates and Insurance	1,219
6,481	Salaries, Menagerie Staff, Keepers, etc.	7,104
3,343	Provisions	4,299
	Menagerie Maintenance—Fuel, Light, Water, Cleaning, Utensils, Transport and Other Expenses			
911	Works and Electrical Departments—	719
	Salaries, Wages, Materials and Sundries			
1,405	Advertising	1,492
—	Farm and Garden—	4
	Salaries, Wages, Seeds, Plants, Implements, etc.			
2,009	Pigkeeping Expenses	3,494
72	184			
15,434	18,515			
	PUBLICATIONS, ETC.			
101	Official Guides, Cost of—Printing, etc.	49
16	Picture Post Cards, Cost of—Printing, Maintenance of Machines	49
	98			
15,551	Carried forward	18,613

INCOME AND EXPENDITURE ACCOUNT—*continued.*
FOR THE YEAR ENDED 31ST DECEMBER, 1943.

Comp. Figures, 1942.	INCOME.						£
£	WHIPSNADE PARK.						£
7,883	Brought forward	8,434
	PUBLICATIONS, ETC.						
114	Official Guides, Sale of	163
78	Picture Post Cards, Sale of	159
						322	
	ESTATE OFFICE, BOTHY, COTTAGES, ETC.						
52	Rents Receivable	52
44	Subsidy under Housing (Financial Provisions) Act 1924 <i>re</i>	44
47	Cottages	18
	Miscellaneous Receipts	114
						114	
8,218							8,870

8,218	Total Income, Whipsnade Park	8,870
107,224	Total Income, Regent's Park (see page 12)	141,345
115,442						150,215

£115,442

£150,215

Comp. Figures, 1942.	EXPENDITURE.						£	£
£	WHIPSNADE PARK.						£	£
15,551	Brought forward	18,613	
	ESTATE OFFICE, BOTHY, COTTAGES, ETC.							
	Fuel, Light, Wages, Refreshments, Telephones, Cleaning, Post-ages, Fittings and Furniture, etc.	274	
346	Stationery and Printing (General)	46	
16	Income Tax (Schedule A)	57	
57	Legal Expenses	19	
						396		
	INTEREST.							
34	Purchase of Land and Premises—Loan	34	
						16,004		19,043

CATERING DEPARTMENT, WHIPSNADE PARK.

	Loss for the Year	2,025	
	Less Rent of Department and Lavatories	780	
						1,245		
	Add Cost of Repairs, Alterations, etc., carried out by Works Department...	158	
1,326						1,403		

DEVELOPMENT ACCOUNT.

	* Improvement and Extension of County Roads—							
480	Loan Charges repaid to Bedfordshire County Council	—	
17,810	Total Expenditure, Whipsnade Park	20,446	
64,298	Total Expenditure, Regent's Park (see page 13)	127,755	
						82,108		148,201
33,334	Balance, being Excess of Income over Expenditure for the year, carried to Balance Sheet (see page 8)	2,014	

£115,442

£150,215

* Further payments to 30th September, 1951, suspended until 12 months after cessation of hostilities.

INCOME AND EXPENDITURE ACCOUNT—continued.
31ST DECEMBER, 1943.

Comp.
Figures,
1942.

INCOME.

DE ARROYAVE

Trustees—The Official Trustees

£103,305 7s. 9d. Funding

£	3,099 Interest on Investment (per Official Trustees of Charitable Funds)	£	3,099
---	---	---	-------

£3,099

£3,099

DAVIS

£1,520 Southern Railway

£	76 Interest on Investment	£	76
---	----------------------------------	---	----

£76

£76

"ZOOLOGICAL

RECORD" FUND.

£	1,168 Balance at 1st January, 1943	£	787
	948 Donations received during year (including transfer from Davis Fund and de Arroyave Fund (see above)		1,167
	Subscriptions and Sales—		
	126 (59/77) Vols. 59/78		£489
	476 (78) Vol. 79		747
			1,236

£2,718

£3,190

We hereby certify that we have audited the Accounts of the Society for the year ended 31st December, 1943, and have found them to be in order and that the above drawn up in strict conformity therewith and that they fully and truly set forth the position as shown by the books of the Society. We have verified the Investments and the Cash Balances and have received all the information and explanations we have required.

224, Regent Street, London, W.1.

23rd February, 1944.

INCOME AND EXPENDITURE ACCOUNT—continued.
31ST DECEMBER, 1943.

Comp.
Figures,
1942.

EXPENDITURE.

TRUST FUND.

of Charitable Funds.

3 per cent. Stock.

£	3 Upkeep of the de Arroyave Grave at Highgate	£	3
	4 Expenses <i>re</i> Inspection of Mausoleum at Westbury		—
	— Repairs, do.		8
			11
	Balance of Income appropriated to—		
	174 "Zoological Record"—Cost of Vol. 79 (see below)		174
	3 Scientific Grants—Regent's Park (see page 11)		3
	2,915 Transfer to Income and Expenditure Account (see page 12)		2,911
			3,088

£3,099

£3,099

TRUST FUND.

Co. 5 per cent. Preference Stock.

£	76 Applied towards Cost of "Zoological Record" (see below)	£	76
---	---	---	----

£76

£76

ALBERT PAM,
Treasurer.

ended 31st December, 1943, and have found them to be in order and that the above drawn up in strict conformity therewith and that they fully and truly set forth the position as shown by the books of the Society. We have verified the Investments and the Cash Balances and have received all the information and explanations we have required.

W. B. KEEN & CO.,
Chartered Accountants.

SCIENTIFIC PUBLICATIONS.

NOTICE OF CHANGE IN METHOD OF PUBLICATION.

Beginning with the year 1944, the method of publishing the *Proceedings* of the Zoological Society in two Series (A—General and Experimental Zoology, and B—Systematic and Morphological) will be discontinued and all papers will be published in a single volume issued in four quarterly Parts.

The subscription rates, payable *before* the day of the Annual General Meeting, will be as follows:—

<i>Proceedings</i>	£1 1s. 0d. per annum.
<i>Proceedings</i> and <i>Transactions</i>	£1 11s. 6d. „

The effect of this change will be that in future Fellows will be able to obtain all papers hitherto published in Series A and Series B in one volume (four quarterly Parts) for £1 1s. 0d. per annum instead of in two separate volumes for £1 11s. 6d. per annum.

The *Transactions*, containing papers which, on account of the nature of the plates required to illustrate them, are better adapted for publication in the quarto form, will be issued at irregular intervals.

REINSTATEMENT OF ADMISSION FEE.

Attention of Fellows is directed to the fact that since 1 October, 1943, the admission fee of £5 has been reinstated, and is payable in the case of all Fellows elected after that date.

ALBERT F. M.
Treasurer.

W. B. KEEN & CO.
Printers & Stationers.