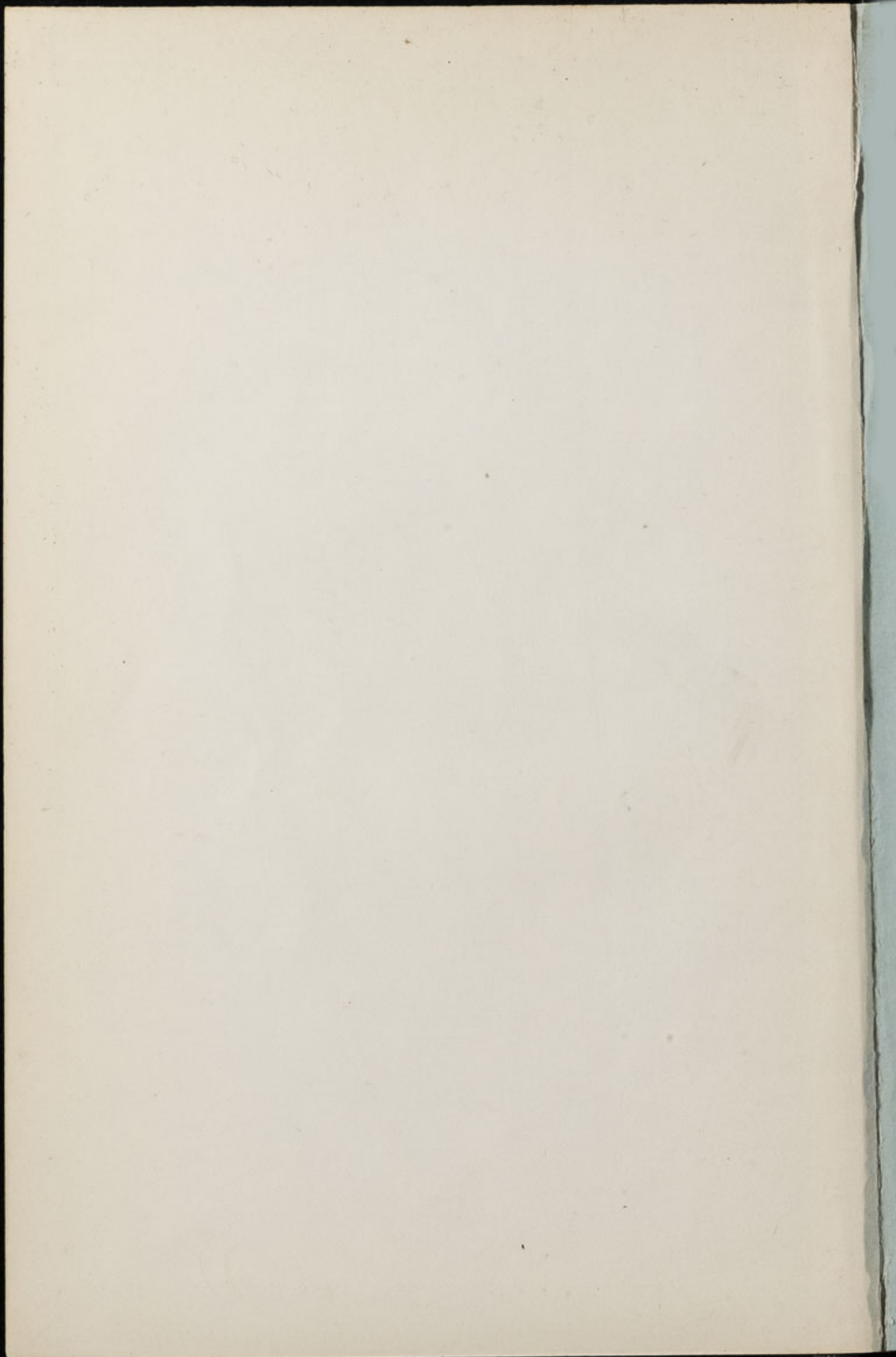


ZOOLOGICAL SOCIETY OF LONDON.



ZOOLOGICAL SOCIETY
OF LONDON



REPORT OF THE COUNCIL AND
AUDITORS FOR 1956

Prepared for the Annual General Meeting, at 4 p.m.
on Monday 29 April 1957

ZOOLOGICAL SOCIETY OF LONDON

The Society was founded in 1826 by Sir Stamford Raffles, Sir Humphry Davy, President of the Royal Society, and other eminent Naturalists,

for the advancement of Zoology and Animal Physiology, and for the introduction of new and curious subjects of the Animal Kingdom, and was incorporated by Royal Charter in 1829. A supplementary Charter, extending and modifying the original Charter to meet modern needs, was granted in 1948.

The Society's Gardens in Regent's Park, which were first opened to the public in 1828, now cover an area of 35 acres. Of the original features and buildings designed by Decimus Burton, the Camel House with its clock tower, the Ravens' Aviary and part of the terrace leading from the Main Gate southwards are still in existence. In 1927 the Society acquired 500 acres of farm and down land at Whipsnade and has developed them into a Zoological Park where there is a minimum of housing and a maximum of open spaces for the animals. Part of the Park is used as a farm which produces much of the fodder for the animals both at Whipsnade and Regent's Park.

The Zoological Society of London, being primarily a scientific society, undertakes and encourages scientific research in zoology by members of its staff and by visiting scientists, and also by scientific expeditions overseas. Scientific Meetings, commencing at 5 p.m., are held in the Meeting Room on the second Tuesday in the months February to June and October to December. At these meetings the results of new research are communicated and discussed, and specimens and films of zoological interest are exhibited. The Society owns one of the finest zoological libraries in the world containing approximately 90,000 volumes including many complete runs of scientific journals.

The *Proceedings*, published eight times a year, in octavo, form the main organ of the Society for the publication of the papers read at the Scientific Meetings and also notices of all business transacted at these Meetings. The papers cover all fields of zoology and are fully illustrated with plates and text figures. The *Transactions* are published at irregular intervals, and contain such of the communications made to the Scientific Meetings as are better adapted for publication in quarto form by reason of the illustrations required.

The *Zoological Record*, a comprehensive bibliography of zoological literature with subject and systematic indices, is published annually by the Society; it is available either as a complete bound volume or separately in 19 parts dealing with the different animal groups. The *Nomenclator Zoologicus* contains the names of all the genera and subgenera in zoology from the 10th Edition of Linnaeus 1758 to the end of 1945, with a bibliographical reference to the original description of each. The work contains approximately 250,000 entries, and is published in 5 volumes.

ZOOLOGICAL SOCIETY
OF LONDON



REPORT OF THE COUNCIL AND
AUDITORS FOR 1956

Prepared for the Annual General Meeting, at 4 p.m.
on Monday 29 April 1957

ZOOLOGICAL SOCIETY OF LONDON

PATRON
HER MAJESTY THE QUEEN

COUNCIL

1956-57

PRESIDENT

SIR LANDSBOROUGH THOMSON, C.B., O.B.E., D.Sc., LL.D.

TREASURER

TERENCE C. S. MORRISON-SCOTT, ESQ., D.S.C., M.A., D.Sc.

SECRETARY

PROFESSOR SIR SOLLY ZUCKERMAN, C.B., M.A., M.D., D.Sc., F.R.S.

PROFESSOR E. C. AMOROSO, Ph.D., B.Sc., M.D., B.Ch., B.A.O.

PROFESSOR W. G. BARNARD, C.B.E., F.R.C.P. (deceased 22nd December, 1956)

CAPTAIN KEITH F. T. CALDWELL

PROFESSOR A. J. E. CAVE, M.D., D.Sc., Ch.B., F.L.S., *Vice-President*

THE RT. HON. THE VISCOUNT CHAPLIN, F.L.S.

CAPTAIN CYRIL DIVER, C.B., C.B.E., *Vice-President*

SIR GARRARD TYRWHITT DRAKE, D.L., J.P., *Vice-President*

COLONEL THE RT. HON. THE LORD FORESTER

FRANCIS C. FRASER, ESQ., D.Sc.

S. WILSON KITCHEN, ESQ.

OSWALD LEWIS, ESQ., M.A.

THE RT. HON. THE EARL OF MANSFIELD, D.L., J.P., *Vice-President*

H. W. PARKER, ESQ., M.A., D.Sc., *Vice-President*

NORMAN D. RILEY, ESQ., C.B.E.

COLONEL HARRY E. ROBERTS

PETER M. SCOTT, ESQ., C.B.E., D.S.C.

IOLO A. WILLIAMS, ESQ.

PROFESSOR JOHN Z. YOUNG, M.A., F.R.S., *Vice-President*

ZOOLOGICAL SOCIETY OF LONDON

REPORT OF THE COUNCIL FOR 1956

The Council has pleasure in presenting its one hundred and twenty-eighth Annual Report to the Annual General Meeting of the Society, to be held on Monday, the 29th April 1957, at 4 p.m., in the Society's Offices in Regent's Park.

THE FELLOWSHIP

OFFICERS AND COUNCIL

At the Annual General Meeting held in the Society's Offices on Friday, the 27th April 1956, the following five Members of Council retired :

Dr. Richard C. Clarke, O.B.E., M.B., Ch.B., F.R.C.P.
 V. G. Davey, Esq.
 Maxwell Knight, Esq., O.B.E., F.L.S., F.R.M.S.
 Sheffield A. Neave, Esq., C.M.G., O.B.E., D.Sc.
 Sir Malcolm Sargent, Mus.D., F.R.C.M., F.R.S.A.

The following were elected as Members of Council to fill the five vacancies :

The Rt. Hon. The Viscount Chaplin, F.L.S.
 Captain Cyril Diver, C.B., C.B.E.
 Norman D. Riley, Esq., C.B.E.
 Colonel Harry E. Roberts
 Iolo A. Williams, Esq.

The Rt. Hon. The Earl of Mansfield, D.L., J.P., who had been appointed to fill the vacancy caused by the death of Mr. Alfred Ezra, O.B.E., was re-appointed.

ROLL OF FELLOWS

The number of Fellows at 31st December 1956 was 8,002 as compared with 7,885 at the end of 1955.

The following were elected Corresponding Members of the Society :

Mr. Walter E. Disney, Dr. Kenneth C. Searle, Mr. Eric J. Phillips.

OBITUARY

The Council regrets to report the death of a number of the Society's Fellows, among them :

The Right Honourable Lord Altrincham, P.C., K.C.M.G., K.C.V.O., D.S.O., M.C., who was a member of Council in 1946-47.

Professor W. G. Barnard, C.B.E., F.R.C.P., who was a member of Council from 1955 until his death.

Sir Harold Scott, K.C.M.G., M.D., F.R.C.P., who was Pathologist to the Society from 1925-28.

Mr. F. J. F. Barrington, M.S., F.R.C.S., a distinguished surgeon and a well-known field naturalist, who in his will bequeathed to the Society part of his library and a sum of £1,000.

Mr. Gerrit Smith Miller of the United States National Museum, Professor George Howard Parker of the Museum of Comparative Zoology at Harvard, and Dr. George B. Wislocki of the Harvard Medical School. These three distinguished zoologists were Foreign Fellows of the Society.

Dr. Sunder Lal Hora, of the Zoological Survey of India and Professor Dr. C. Wesenberg-Lund, formerly of the Zoological Museum Copenhagen, both Corresponding Members of the Society.

STAFF

PAY

ORGANISATION

DIPLOMA IN ANIMAL HUSBANDRY

Three major steps have been taken during the course of the year with the object of improving the employment prospects of staff engaged (*a*) on general menagerie work in Regent's Park and Whipnade ; (*b*) on works maintenance ; (*c*) on gardening, and (*d*) in the Society's sanatorium, quarantine station, and laboratories. The first was a general rise in pay. The second was a complete regrading of the employees of the Society (other than Headquarters staff who are in a separate category) into a single scheme which provides greater incentives and greater opportunities of promotion. The third innovation was the institution of a course of instruction that will lead to a diploma in the care and management of menagerie animals. All three steps were warmly welcomed by the staff and, given that the last continues as well as it has begun, Council hopes that the Society's internal diploma will eventually receive the same recognition as the National diploma for animal technicians who work in laboratories. Those keepers who have served four years in that rank, and who are awarded the diploma, will immediately be promoted to the grade of Senior Keeper, the promotion carrying the appropriate increment in salary. The organisation of a diploma course reflects the fact that the maintenance of wild animals is becoming an increasingly scientific discipline. This new step is also in keeping with the better educational opportunities that are open to all young people today.

APPOINTMENTS AND RETIREMENTS

Apart from this general re-organisation of the staff (of which a list is given in Appendix I), the following changes occurred by appointment and retirement :—

Mr. R. N. Fiennes, M.A.(Cantab.), M.R.C.V.S., joined the staff on the 3rd September 1956 as Pathologist. He is responsible for the post-mortem examination of animals that die in the Gardens, and will

also carry out original research in animal pathology. Mr. Fiennes's previous appointment was that of Senior Lecturer in Animal Health and Veterinary Science in the University College of the Gold Coast, Achimota. Before that he had spent some twenty years in the Colonial Veterinary Service in Uganda and Kenya. He has published a number of papers on trypanosomiasis and has also worked on other protozoans, on helminths, bacteria and viruses.

Dr. Desmond Morris, B.Sc. (Birmingham), D.Phil. (Oxon) was appointed Head of the Television and Film Unit (see p. 8) in April 1956. Dr. Morris has published numerous papers on animal behaviour, in particular on the courtship of certain finches and on the reproductive behaviour of some freshwater fishes.

Mr. A. D. J. Gregory, Head Keeper of the Eastern Aviary, was promoted to the rank of Overseer and appointed Overseer of Birds.

Mr. G. R. Doubleday, who joined the staff in 1909, retired from the service of the Society on the 15th September 1956. In 1943 he was appointed Public Relations Officer. He had also been responsible for the management of the Children's Zoo, the Zoo Shop, and the Push Chairs. During the 1939-1945 war, he organised a number of special Utility Exhibitions.

Mr. E. B. Tanner, B.E.M., who joined the staff in 1908, retired from the Society's service on the 15th March 1956. He served for many years in the bird section of the Menagerie, being promoted Overseer in 1947. He was awarded the British Empire Medal in the Coronation Honours in 1953, and the Bronze Medal of the Society on the 15th February 1956.

Mr. Arthur Stanley Budd, who joined the staff in 1916, retired from the Society's service on the 16th July 1956. Mr. Budd served for many years in the Monkey House, and was awarded the Society's Bronze Medal on the 17th April 1940 for assiduous care in the rearing of anthropoids. He was appointed Keeper of the Primates on the 16th December 1945 and Overseer of Primates on the 23rd March 1954.

Mrs. Dorothy A. Pinto-Leite, a Silver Medallist of the Society, has retired from the post of Honorary Supervisor of the Apes' Nursery, and Council would like to take this opportunity of thanking her for many years of devoted service in the care of young apes in the Society's collection.

BRONZE MEDAL

The Bronze Medal of the Society was awarded to Overseer Edward Bradstock Tanner, B.E.M., on the 15th February 1956 for long and devoted services, 1908-56.

OBITUARY

The Council regrets to report the death of Mr. Basil William Mylward on the 30th March 1956, and of Mr. John Withers Lester on the 9th August 1956.

Mr. Mylward joined the staff in 1911 and was appointed Assistant Accountant in 1934.

Mr. Lester joined the staff as Curator of Reptiles in 1946, and became Curator of Reptiles and Insects on the retirement of Mr. L. C. Bushby in 1955. He played a large part in the stocking of the Reptile House after the war, and was awarded the Society's Silver Medal on the 16th November 1955 for outstanding services in leading a number of expeditions for collecting animals, in Sierra Leone 1948, 1950 and 1954, in the Gold Coast 1950, in Uganda 1952 and in British Guiana 1955.

VISITORS

The number of visitors to the Gardens at Regent's Park during 1956 was 1,948,046, compared with 2,078,460 in 1955. The number of visitors to the Aquarium during 1956 was 337,659, compared with 358,647 in 1955. The Children's Zoo was open from 26th March to 28th October 1956. The number of visitors was 243,086 compared with 288,540 in the previous season.

The declining trend in the number of visitors to Regent's Park was becoming obvious by the late spring of 1956, and intensified as the summer weather continued to deteriorate. A similar decline was experienced, almost without exception, by every other Zoological Garden in Great Britain; and also by a large number of Zoological Gardens on the Continent.

The average annual number of visitors to the Regent's Park Gardens over the past ten years has been approximately $2\frac{1}{4}$ millions; and the number has fallen below 2 million on only four of these years. 1956 had the wettest summer of the ten; indeed, from this point of view, it was almost a record for the past 75 years. On the other hand, 1953, one of the other three years when attendances fell below 2 millions, had the second lowest "total rainfall hours" for the past ten years. From this it seems improbable that fluctuations in the number of our visitors can ever be attributed solely to any single climatic factor.

An equally indecisive conclusion emerges when we consider the prevailing attractions of the Gardens at any given time. The peak of attendances in Regent's Park occurred in 1950, when just over three million visitors passed through our gates. The general amenities of the menagerie in that year were certainly not as good as they are today, and the main reason for the large gate was undoubtedly the polar bear known as Brumas, which was born in the Gardens.

The drawing power of "star turns" of this kind is, however, again unpredictable, as is indicated by the relative lack of response to the considerable publicity which was given in 1956 to a young Syrian bear known as Nikki which had been deposited in the Gardens by our Patron, Her Majesty the Queen. This bear had been presented to Her Royal Highness Princess Anne by Marshal N. A. Bulganin and Mr. N. S. Khrushchev on the occasion of their visit to England.

Quite apart from the popularity of particular animals and the vagaries of weather, another major factor which today influences the number of visitors to the Society's Gardens is the greater accessibility of attractions further afield due to the increase in motor transport.

Only an elaborate enquiry could therefore determine the extent to which the 1956 reduction in the number of visitors is to be attributed to bad weather.

The situation is being closely watched in the hopes that the element of unpredictability in the number of visitors to the Gardens can be reduced.

1956 closed with the introduction of petrol rationing. The effect of this measure on the numbers of visitors in 1957 will depend entirely on the duration of the fuel shortage. Whipsnade Park is bound to be more affected than Regent's Park, which depending on circumstances might not be adversely affected at all.

GATE RECEIPTS

In contrast to the number of visitors, gate receipts increased in 1956, in comparison with 1955, as a result of a decision taken to raise the price of admission to Regent's Park and Whipsnade to 3s. for adults and 1s. 6d. for children (excluding Mondays at Regent's Park, when the price of admission was set at 2s. for adults and 1s. for children). This change operated from the 1st March and was made because of the increased costs of maintaining the menagerie in Regent's and Whipsnade Parks.

It is worth noting that, in 1955-56, gate receipts accounted for some 60 per cent. of the total revenues of the Society as compared with 6.5 per cent. from subscriptions and other revenues derived from Fellows.

CATERING DEPARTMENT

The contribution of the catering profits to the total resources of the Society, amounting in 1954-55 only to some 6 per cent., has always been less than it might otherwise have been. We necessarily have to maintain during the winter months what is virtually a full restaurant service for a relatively small number of visitors during the shorter hours the Gardens are open. Certain economies and alterations in tariffs may help in offsetting this factor in future. Another cause of the relatively heavy overheads of our catering departments is that the Zoological Society, because of its recognised status as an educational charity, can operate its restaurant facilities only during the hours the menagerie is open to the public. In order to overcome this institutional difficulty, the Council has agreed to permit a company, known as Zoo Restaurants Ltd., to have access to the Society's premises as well as the use of the Society's catering equipment for the supply of refreshments during those hours when the menagerie is closed. Subject to the usual statutory conditions, this company has also been appointed to operate the licensed bars that are normally

available when the menagerie is open. The two shareholders of this company have made a deed transferring to the Society, as a gift, the dividends they may receive from the company, and on which tax, other than Profits Tax, can be recovered by the Society as an educational charity. It follows that the revenues of the Society should be augmented by the amount of the profit earned by Zoo Restaurants Ltd.

TELEVISION UNIT

Another innovation which will add to the Society's revenues has been the establishment, in association with Granada Television Ltd., of a television unit resident in the Society's Gardens. The Society's funds have not been used in this development, and the Society maintains a close liaison with Granada to ensure the quality of the programmes from the scientific point of view. The arrangement does not preclude any other television company, including the B.B.C., from using the programmes prepared by the resident Unit. It is gratifying to report that the first year's operations of the Unit have met with great success, and have attracted considerable public attention. One competition, which children were invited to enter, drew as many as 65,000 entries.

ECONOMICS OF PUBLICATIONS

Another measure that has been taken, partly in order to increase the speed of production of our scientific publications and partly in order to make them more economic, has been to issue two volumes a year, in changed format, in place of the one that has appeared hitherto.

As a result of this new policy eight parts of the *Proceedings*, instead of four, were issued during the year at a cost of £6,104. The net revenue during the year was, however, £907 better than that for the previous year.

REBUILDING AND DEVELOPMENT

The rebuilding and development of the Society's Gardens in Regent's Park, and the further development of Whipsnade Park, are entirely dependent on measures which strengthen existing sources of revenue, or which provide new sources of revenue, or which reduce the costs of our operations. In 1951 an ambitious plan for the rebuilding of the Gardens was announced. The implementation of this particular plan, which was the work of the Society's own Architect, has had to be deferred mainly because of the lack of sufficient resources. After reviewing the situation, Council has now commissioned Sir Hugh Casson, through the Royal College of Art, to prepare, in association with the Society's Architect, an alternative sketch plan for the rebuilding of the Regent's Park Gardens. The aim is to devise a master plan which, while controlling developments, will be more elastic in its operation in relation to the resources which the Society

might muster for the task. Our ultimate object is to transform our Gardens in such a way that the north end of Regent's Park becomes a major feature of London, both from the point of view of architecture and that of landscape, as well as the finest Zoological Garden in Europe.

NEW SANATORIUM

PONY STABLES

LECTURE HALL

LIBRARY

The standstill on the 1951 development plan has not, however, affected building operations in Regent's Park. 1956 has seen the completion of the new Sanatorium and Quarantine Station. This is a development that sets a new standard in the care of menagerie animals. 1956 has also seen the completion of the new Pony Stables. Major changes have also been made in the Society's meeting room, the amenities of which have been improved at the same time as its seating capacity has been increased. The library has also been provided with new storage space for a further 30,000 volumes. The Aquarium roof is being reconstructed, and preparations are complete for the erection of two new lavatories and for major alterations to the premises of the old Prosectorium. The Works Section has also been heavily occupied with general maintenance work.

ZOOLOGICAL GARDENS, REGENT'S PARK

SPECIAL VISITS

His Excellency the Polish Ambassador and Madame Milnikiel, together with the Rt. Hon. The Earl of Radnor, K.C.V.O., Chairman of the Forestry Commissioners, and Sir Arthur Gosling, K.B.E., Director General of the Forestry Commission, as well as other officials, paid a visit to the Regent's Park Gardens on the 13th November 1956. The occasion marked the deposit in the Gardens of a pair of European Bison which had been presented by the Polish Government to the Forestry Commission.

The Hon. Sir T. Clifton Webb, K.C.M.G., Q.C., High Commissioner for New Zealand, visited the Gardens to inspect the Tuatara which had been presented by the Department of Internal Affairs of the Dominion of New Zealand.

OCCURRENCES OF SPECIAL INTEREST

After the presentation by the Society of a stock of Père David's Deer to the Zoological Society of China (see p. 11) Senior (now Head) Keeper T. W. Sangster brought back with him as a gift from the Zoological Society of China, one Mandarin Duck, two Chinese Alligators and a Giant Salamander, and at Singapore he added to his consignment six Tigers presented by His Highness The Sultan of

Johore and 3 Kuhl's Deer, the gift of Mr. R. A. Wright, M.R.C.V.S. Later in the year two young Tigers were presented by the 1st Battalion of the Royal Hampshire Regiment, and a further female Tiger by Mr. H. F. Meston. In addition to these presentations, the Tiger "Nepti", which has been in the collection since 1952, gave birth to a female cub in March and to a further two cubs in July.

The most notable births during the year have been a Saiga Antelope, a Kuhl's Deer, a Giraffe, a Mandrill, an American Bison and two King Penguins.

An unhappy event was the death of the Hippopotamus "Daisy". The post-mortem examination revealed a rubber ball lodged in her intestine. This is the second time that a hippopotamus in the Society's Gardens has been inadvertently killed by a member of the public.

AQUARIUM

Through the kindness of Mr. L. S. Mowbray, Curator of the Government Aquarium and Museum in Bermuda, the Society's Aquarium has received five specimens of the Green or Giant Moray Eel (*Gymnothorax funebris*). These fish, together with six Albemarle Island Tortoises (*Testudo vicina*), were brought back in the care of Overseer F. C. Akhurst.

FLOWER GARDENS

The Rose Garden, formed in 1955, is now coming to maturity and the roses have been favourably noticed in the horticultural press. There are now some 200 varieties of dahlia in the Gardens, a feature in which many Fellows and members of the public have shown great interest.

Plants of the annual *Cleome spinosa*, a recent introduction, have been raised from seed and planted out in the border surrounding the Fellows' Lawn.

The collection of orchids purchased in 1955 is now well established in the greenhouses, and as the plants have come into flower they have been put on exhibition in the Tropical Bird House.

New plantings of flowering trees and shrubs have been made on the north side of the new Pony Stables, and collections of narcissus have been planted round the Budgerigar aviary and on the bank between the Old Tunnel and the Main Offices.

SUPPLIES OF FOOD, BEDDING AND EQUIPMENT

Over eighty different kinds of animal food totalling nearly 900 tons in weight have been handled by the Supplies Section, ranging from meat (100 tons) and hay (300 tons or the produce of 280 acres) to such delicacies as Malayan dried fly (100 lb.) which is used only for the rarer insectivorous birds.

The Supplies Section has also purchased and issued all bedding and litter, over 3,000 tools, in particular brooms and brushes, some

2,000 gallons of disinfectant, 1,300 tons of oil and hard boiler fuel and the uniforms and protective clothing used by the Society's staff.

ANIMALS AT REGENT'S PARK

Animals of all kinds (except Fish and Invertebrates) on 1st January 1956	3,298
Animals of all kinds (except Fish and Invertebrates) received in 1956 by presentation, exchange, deposit, purchase (and transferred from Whipsnade)	1,172
Animals of all kinds (except Fish and Invertebrates) born in the Menagerie during 1956	315
	<hr/>
	4,785
Animals of all kinds (except Fish and Invertebrates) dead, sold, sent in exchange or returned to depositors (and transferred to Whipsnade) during 1956	1,638
	<hr/>
Animals of all kinds (except Fish and Invertebrates) in the Gardens on 31st December 1956	<u>3,147</u>

WHIPSNADE PARK

VISITORS

Attendances at Whipsnade Park in 1956 reflected the same general trend as was manifested at Regent's Park, the number being 549,305 as compared with 601,559 in 1955.

Their Royal Highnesses The Duke and Duchess of Gloucester, together with Prince Richard, visited the Park on the 3rd May 1956 and were received by the President of the Society.

Her Highness The Sultana of Johore also paid a visit to the Park.

The new Children's Zoo was opened to the public at Easter and during the year 107,488 visitors were admitted.

OCCURRENCES OF SPECIAL INTEREST

During the early part of the year the Society presented to the Zoological Society of China two pairs of Père David's Deer. These deer were moved from Whipsnade Park to Regent's Park and then travelled by ship to China, in the care of Head Keeper T. W. Sangster. The return of a stock of these deer to their native country, where they had been extinct for many years, has been much appreciated by Chinese zoologists.

Notable births in the Park during the year were one Mongolian Wild Horse, one Hippopotamus and two Collared Peccaries.

WORKS SECTION

The year was occupied with maintenance and renewal of existing buildings. In addition a new enclosure and shelter was completed for

Pigmy Hippopotamus and was occupied by a young male of this species in the middle of the season. Further progress was made with the renewal of the boundary fence of which 70 per cent. of the total of 8,350 yards has now been completed.

It is unfortunate that the opening of the new and splendid Children's Zoo, which was built to the design of our own architect, as well as other improvements and developments at Whipsnade Park, coincided with a general decline in attendance at Zoological Gardens throughout the country.

WHIPSNADE GREEN

The Society has purchased the soil of Whipsnade Green, the common land lying at the approaches to Whipsnade Park, and a Special Committee has been set up to advise on the preservation of its amenities.

FARM AND GARDEN

Among the supplies sent to Regent's Park were 19 tons of oats, 246 cwt. of potatoes, 210 cwt. green clover, lucerne, swedes and kale, and 600 day-old chicks. A small amount of venison and of prime Aberdeen-Angus beef was supplied to the Catering Departments at Regent's Park and Whipsnade.

From the Gardens at Whipsnade 12,550 wallflower plants were supplied to Regent's Park.

FATAL ACCIDENT AT WHIPSNADE PARK

On 31st May 1956 an accident, which proved fatal, occurred at Whipsnade Park. A ten-year-old boy, one of a party of Wolf Cubs, climbed over the outer barrier of the lion enclosure and, having slipped his arms between the bars, was seriously mauled. At the inquest, the Coroner recorded a verdict of Death by Misadventure.

Safety barriers or fences are erected around the cages or enclosures of all dangerous beasts to deter visitors from getting at the animals. Numerous notices are displayed to indicate that the animals are dangerous. Warnings are also posted both at the main gates, and in special places in Regent's Park and Whipsnade, to the effect that it is an offence under the Regulations of Sect. 17 of the Zoological Society of London Act of 1928, and one punishable on summary conviction, for a visitor to climb barriers, push his fingers between bars, or to do anything which brings him into closer touch with the animals than the menagerie arrangements intend. It is also an offence "to interfere with or tease" an animal, and any officer or servant of the Society may, after due warning, exclude or remove any person, whether he be a Fellow or a member of the general public, who infringes these regulations, or whose behaviour suggests that he is likely to do so. Hitherto, there has been only one prosecution under these powers.

The Society also has an internal regulation barring children under the age of 12 from entering or wandering round the menageries except under the supervision of an adult. Notices also make it clear that the Society does not hold itself liable for any hurt that comes to a visitor who infringes the rules.

Since the fatal accident at Whipsnade the number of warning notices has been considerably increased. Safety barriers and fences have also now been strengthened and made more effective in other ways, at the same time as a warning bell system has been introduced at Whipsnade Park. These things cannot be done without some cost to the visual amenities of our menageries.

In reporting this sad event, Council wishes to emphasise that no practicable safety barrier will ever deter someone who is determined to harm either himself or an animal. All that can be done is to maintain a continuous check in order to ensure that our security arrangements are always at a high pitch of efficiency, and in order to help prevent members of the public endangering themselves, even if the risk is their own.

A second accident which occurred at Regent's Park on 18th June 1956 also attracted considerable attention in the Press. On this occasion a mother lifted her child over the safety barrier in front of the monkey house and its hand was bitten by the Gorilla. The incident occurred within a few feet of a notice declaring that the animal was dangerous.

A special statement was issued to the Press after this incident in order to acquaint the public with the facts noted above.

ANIMALS AT WHIPSNADE PARK

Animals of all kinds (except Fish and Invertebrates) on 1st January 1956	1,852
Animals of all kinds (except Fish and Invertebrates) received in 1956 by presentation, exchange, deposit and purchase (and transferred from Regent's Park)	260
Animals of all kinds (except Fish and Invertebrates) born in the Park during 1956	257
	<hr/>
	2,369
Animals of all kinds (except Fish and Invertebrates) dead, sold, sent in exchange or returned to depositors (and transferred to Regent's Park)	572
	<hr/>
Animals of all kinds (except Fish and Invertebrates) on 31st December 1956	<u>1,797</u>

MEETINGS AND LECTURES

Four Ordinary General Meetings were held during the year.

Eight Scientific Meetings were held during the year and these were well attended. The papers read have been published in the

Society's "Proceedings", and of the many interesting communications made the following may be specially noted: an account given by Dr. C. A. Knox of the oceanographic expedition to the Chatham Islands made in the s.s. "Alert" in January-February 1954; the report by Mr. Robert Clarke of the recovery intact of a giant squid, *Architeuthis* sp., from the stomach of a sperm whale; the description by Mr. Robert Clarke of successful attempts to mark whales from a helicopter; the presentation by Dr. Elwood C. Zimmerman of a series of excellent kodachrome slides taken by Dr. E. R. Ross of colourful insects in the Peruvian Amazon; the exhibition by Professor W. S. Bullough of a film, shown by courtesy of Professor Anton Bruun, taken by the Danish Deep-sea *Galathea* Expedition 1950-1952, showing the animal life of the deep sea; the address by Professor F. S. Bodenheimer on the primordial mammalian egg; an account by Professor H. Butler of *Galago senegalensis* and its habitat in the Nuba Mountains, Sudan; the description by Lord Richard Percy and Mr. M. W. Ridley of the Sooty Tern breeding colonies in the Seychelles; the presentation by Field-Marshal The Viscount Alanbrooke of his films entitled "Snipe" and "Red-necked Phalarope in South Uist", also of the film entitled "Wild Spain—an expedition to the Coto Donana", illustrating the birds of the Spanish Marismas; the description of the reproductive cycle in the badger, and its associated behaviour, by Mr. Ernest G. Neal, and a talk by Major Gavin Maxwell on the Marshes of southern Iraq. An outstanding contribution was made by Professor E. C. Amoroso, J. Austin, A. Goffin, and G. Langford on the natural history of the Marsupial Frog *Gastrotheca marsupiatum*.

CONFERENCES

The Society was represented by the Director at the celebration of the 25th Anniversary of the founding of the Zoological Gardens in Prague, from 28th September to 3rd October 1956.

The Society was represented at the 10th International Congress of Entomology, held in Montreal in August, by Mr. N. D. Riley, C.B.E.

The Society was represented at the 5th Meeting of the International Union for the Protection of Nature, held in Edinburgh in June, by Captain Keith F. T. Caldwell and Dr. H. Gwynne Vevers, M.B.E.

Mr. E. H. Tong attended the Annual Conference of the Directors of Zoological Societies of Great Britain and Ireland, held in Chester from 24th to 28th September.

CHRISTMAS LECTURES

Three lectures were given in the meeting room during the Christmas holidays for the children of Fellows and their friends. The lectures, illustrated with films, slides and living animals were, as in previous years, extremely popular and drew large attendances.

The children heard Dr. Desmond Morris, deputising for Mr. Maxwell Knight, O.B.E., who was indisposed, speak about some of his pet animals. The theme of the talk given by Dr. H. Gwynne Vevers, M.B.E., was "How Animals Feed", and Mr. David Attenborough showed and commented upon a film taken during the joint Zoological Society of London and B.B.C. Expedition to British Guiana, 1955.

LECTURE FOR L.C.C. SCHOOL CHILDREN

A lecture for L.C.C. Secondary school children was given on 30th December 1956 by Dr. H. Gwynne Vevers, M.B.E., on "How Animals Feed", and was illustrated with slides and living specimens. At the request of the L.C.C. this lecture was repeated on 4th January, 1957.

RESEARCH

PROSECTORIUM

During the year 944 necropsies were carried out on animals which died at Regent's Park—187 on mammals, 406 on birds, and 351 on reptiles and amphibians. At Whippsnade Mr. Martin Senior carried out 256 necropsies, 102 on mammals, 148 on birds, and 6 on reptiles.

Material from outside sources was also received for investigation and this included some from other zoological gardens, including some in America.

Besides specimens preserved for use in the Prosectorium, a considerable amount of anatomical, physiological, biochemical and pathological material has been supplied to other institutions, and the results of research on it have appeared in a number of scientific publications.

PATHOLOGY LABORATORY

The new Pathology Laboratory was occupied during November, and from the end of 1956 the Pathologist has taken over post-mortem investigation of the animals which die in the Gardens at Regent's Park.

VISITING SCIENTISTS

During the year Dr. H. Fleishhacker of Shenley Hospital has worked in the Society's laboratories on a study of human and anthropoid cerebral fissural patterns with special reference to asymmetries, and Dr. R. Kanagasuntheram of Colombo has worked with the Prosector on the muscles of the hand in the Loris, and a paper on the results of this work has been accepted for publication in the *Proceedings*. The Prosector and Dr. Kanagasuntheram are also preparing an account of the genitalia of certain male gibbons.

RESEARCH STUDENTS

Miss O. J. Sidney, the investigator appointed by the Game Subcommittee of the Tsetse Fly and Trypanosomiasis Committee of the

Colonial Office, has continued to make use of the accommodation provided in the Society's Library for research and consultation of the literature on African mammals. Her final report is in course of preparation.

The grant received from the Nature Conservancy for an investigation into the biology of the mole by Dr. G. K. Crowcroft was renewed for a final year, and she has produced some preliminary reports on the work. A final report is in course of preparation.

PUBLICATIONS

PROCEEDINGS

Two volumes of the *Proceedings*, each consisting of four parts, were published during the year.

Printed in a new face type, the two volumes contain contributions on a wide variety of zoological subjects, and attention may be drawn to the following: the three papers by R. F. Ewer on the fossil carnivores of the Transvaal caves; the lateral musculature and the swimming of fish by J. R. Nursall; studies on the life-history and ecology of the trematode genus *Renicola* Cohn, by C. A. Wright; observations on the venous system in certain Pinnipedia and Cetacea by R. J. Harrison and J. D. W. Tomlinson; the skull of *Ictops* and the classification of the Insectivora by P. M. Butler; the origin of nest-cement in Edible-nest Swiftlets (*Collocalia* spp.) by A. J. Marshall and S. J. Folley; cranial crests in the Anthropeoidea by E. H. Ashton and S. Zuckerman; reactions to shape in *Octopus vulgaris* Lamarck by B. B. Boycott and J. Z. Young; observations on the enteropneust, *Protoglossus koehleri* (Caullery and Mesnil) by C. Burdon-Jones; habits and movements of cave-dwelling bats in Devonshire by J. H. D. Hooper and W. M. Hooper; a revision of the genera *Phaneroptera* Serville and *Nephoptera* Uvarov (Orthoptera: Tettigoniidae), with conclusions of zoogeographical and evolutionary interest by D. R. Ragge; a contribution to the breeding biology of the Weaver-finch *Quelea quelea* (Linnaeus) in East Africa by H. J. de S. Disney and A. J. Marshall; the patterns of dermal bones in primitive vertebrates by F. R. Parrington; the breeding cycle of the Short-tailed Shearwater, *Puffinus tenuirostris* (Temminck), in relation to trans-equatorial migration and its environment by A. J. Marshall and D. L. Serventy,

TRANSACTIONS

The 28th volume of the series was completed with the issue on the 25th September 1956, as Part 7, of a paper by L. Harrison Matthews entitled "The sexual skin of the Gelada Baboon (*Theropithecus gelada*)".

NOMENCLATOR ZOOLOGICUS

The names of and bibliographical references to some 1,875 new genera and subgenera in zoology, published mainly in the literature for 1954, were incorporated into the file maintained in the Library.



Photo: The Times.

A view of the main exhibition building of the new Children's Zoo at Whipsnade which was opened during the early part of 1956.

The new hospital and quarantine station at Regent's Park. A view from the south-east.

Photo: Fox Photos.



able and may be obtained from Messrs. Gale & Polden Ltd., 28 Craven Street, London, W.C.2.

LIBRARY

The alterations to the meeting room and the construction of the basement book store were completed and some 20,000 volumes transferred from the main library to the mobile book stacks in the new store.

The library stock of periodicals and separate works is now estimated at 90,000 volumes, and its reprint collection at 8,200.

The number of library books lent to Fellows during the year was 3,083, and a further 678 volumes were lent to other scientific institutions.

The accessions to the library were 151 books and 4,743 parts of 763 periodicals.

The number of volumes bound was 985, and a further 205 were repaired.

Mr. F. J. F. Barrington, who had been a Fellow since 1920, bequeathed to the Society £1,000 for the maintenance or development of its library and a collection of 449 volumes of periodicals and separate works.

ACKNOWLEDGMENTS

The Society is indebted for gifts of specimens to : The Government Aquarium and Museum, Bermuda, the British Broadcasting Corporation (Television Service), the Cambridge Mlanje (Nyasaland) Expedition 1956, the Department of Internal Affairs and Northern Province of Canada, the Freshwater Biological Association, the Gough Island Scientific Survey, His Excellency Ismail Hakki, Mr. C. J. P. Ionides, c.m.z.s., His Highness The Sultan of Johore, Dr. L. S. B. Leakey, c.m.z.s., Mr. G. H. Newmark, Mr. J. R. Newmark, The Department of Internal Affairs of the Government of New Zealand, Mr. Eric J. Phillips, c.m.z.s., Mr. Peter M. Scott, c.B.E., D.S.C., Dr. K. C. Searle, c.m.z.s., Mrs. Daphne Seggar, Dr. F. J. Simmonds and Mr. R. A. Wright, M.R.C.V.S. In addition the following Zoological Societies have made valuable gifts or sent interesting animals to Regent's Park and Whipsnade on an exchange basis : The Royal Zoological Society of Antwerp, the Zoological Society of China, the Parc Zoologique de Clères, The Dudley Zoological Society Limited, the Paignton Zoological and Botanical Gardens, the Zoological Gardens, Prague, the Royal Zoological Society of Scotland. Complete lists of donors of animals to Regent's Park and to Whipsnade are contained in Appendices III (page 27) and VI (page 38).

Several collections of marine animals have been assembled and sent from Madeira by Senhora Hermione Blandy de Freitas Martins and Senhor João de Freitas Martins, C.M.Z.S., who continue to take a lively interest in the Society's Aquarium.

During his journeys to and from Peking, the following were specially helpful to Senior (now Head) Keeper T. W. Sangster : Mr. Castro of Messrs. R. Loxley & Company Limited, Hong Kong, Mr. M. J. Henigan, M.R.C.V.S., of the Veterinary Department, Singapore, who made all the arrangements for the shipment of the Kuhl's Deer and procured hay, which was in short supply, for their journey, Mr. Barr-Sim of the Ben Line Steamers at Singapore, who procured meat for the tigers' journey to London, and Mr. R. Winn, Chief Officer of s.s. "Benmhor", who with three of his junior officers loaded the animals at Singapore after the dockers had refused to do it.

The following have rendered valuable assistance to the Society's Veterinary Officer in the field of animal health : The Royal Veterinary College, the Royal National Orthopaedic Hospital, Stanmore, the Institute of Orthopaedics, the Wellcome Foundation and the Pfizer Laboratories Limited.

The Society is grateful to the following for assistance at Whippsnade : Mr. J. E. Nigel Sloan, B.Sc., Parasitologist of the Cooper, McDougall & Robertson Field Research Station at Berkhamsted, for identification of parasites, Dr. H. D. Holt, M.R.C.S., L.R.C.P., D.P.H., Director of the Public Health Laboratory Service, Luton, for bacteriological investigation, and Dr. J. Brian Shaw, M.D., D.P.H., of the Luton Chest Clinic.

The Society's thanks are due to the following Ministries and Public Institutions for their assistance in a variety of ways : the Ministries of Agriculture, Fisheries and Food, Education, Fuel and Power, Health, Transport and Works, the Board of Trade, H.M. Customs & Excise, the British Museum (Natural History), the Royal Botanic Gardens, Kew, the Public Health Departments of the Corporation of the City of London, and of the Metropolitan Boroughs of Acton, Hampstead, Holborn, St. Marylebone and St. Pancras.

In the sphere of shipping and transport the following companies and corporations have given valuable co-operation : Air France, the American Express Company Incorporated, the Antwerp Steamship Company Limited, the Booker Line, the British European Airways Corporation, the British India Steam Navigation Company Limited, the British Overseas Airways Corporation, British Railways, Brown, Jenkinson & Company Limited, the Canadian Pacific Steamships Limited, Elder Dempster Lines Limited, Gray, Dawes & Company Limited, Hernu Peron & Stockwell Limited, Houlder Brothers & Company Limited, Killick Martin & Company Limited, the London Transport Executive, MacAndrews & Company Limited, Munro Transport, J. F. Obree & Son Limited, Pacific Steam Navigation Company, Pan American World Airways, the P. & O. Steam Navigation Company Limited, the Port Line Limited, the Royal Dutch Airlines,

FINANCE

Legacies

The following legacy was received during the year :—£1,000 from the late Frederick James Fitzmaurice Barrington, M.S., F.R.C.S., for the maintenance or development of the Library.

Income and Expenditure

- (a) REGENT'S PARK. The income was £325,437 (an increase of £28,352) and the expenditure amounted to £281,487 (an increase of £13,253).
- (b) WHIPSNADDE PARK. The income was £114,805 (an increase of £4,650), and the expenditure amounted to £105,412 (an increase of £13,692).
- (c) SURPLUS. The net surplus (after charging the cost of Pensions paid, and making appropriations to Funds to meet future liabilities) carried to the General Purposes Account, amounted to £7,209 as compared with £6,793 for 1955.

Assets, Liabilities and Balance

- (a) ASSETS. At the end of the year the total assets of the Society amounted to £1,202,324, a decrease of £2,500 on the corresponding figure for 1955.
- (b) LIABILITIES. The liabilities (including Pensions Fund and Depreciation of Investments Reserve Fund) amounted to £468,199, a decrease of £27,044 on the corresponding figure for 1955.
- (c) BALANCE. The balance, being the surplus of assets over liabilities, amounted to £734,125, an increase of £24,544 on the corresponding figure for 1955.

Signed (for the Council)

S. ZUCKERMAN,
Secretary

20th March, 1957.

APPENDIX I.

STAFF

ADMINISTRATION

Director	L. Harrison Matthews, M.A., Sc.D., F.R.S.
Accountant and Clerk to the Council	S. A. Westwood
Assistant to the Director	H. Gwynne Vevers, M.B.E., M.A., D.Phil.
Private Secretary	Miss Grace E. Gay

REGENT'S PARK

Curator of the Aquarium	H. Gwynne Vevers, M.B.E., M.A., D.Phil
Curator of Birds	J. J. Yealland
Curator of Mammals and Veter- inary Officer	Oliver G. Jones, M.R.C.V.S.
Prosecutor	W. C. Osman Hill, M.D., F.R.S.E., F.L.S.
Pathologist	R. N. Fiennes, M.A., M.R.C.V.S.
Librarian and Clerk of Publica- tions	G. B. Stratton, M.B.E., A.L.S.
Architect	F. A. Stengelhofen, L.R.I.B.A.
Chief Clerk	W. N. Pickford, M.M., A.G.I.S.
Supplies Officer	C. G. Nicholls
Catering Manager	W. N. Hill, F.H.C.I.
Head Gardener	H. Hemmings
Senior Overseer	L. M. Flewin
Gardens Executive Officer	C. G. Harwood

Overseers

Aquarium	F. C. Akhurst
Insect House	G. Ashby
Carnivores and Small Mammals	L. M. Flewin
Birds	A. D. J. Gregory
Reptile House	A. R. Lanworn
Ungulates	H. Vinall

Senior Head Keepers

North Mammal House	J. C. T. Aldis
Ostrich House	S. J. Hexter
Bears	B. W. Smith

Head Keepers in Charge

Parrot House	S. A. Croucher
Reptile House	E. W. Dexter
Small Cat House	T. E. Grantham
Rodent House	G. Graves
Lion House	C. E. Hitchcock
Insect House	R. P. Humphrys

Elephant House	F. G. J. Jones
Bird House	D. G. Newson
Aquatic Birds	G. F. Newson
Cattle Sheds	J. C. Pullen
Giraffe & Hippopotamus House	H. G. N. Robinson
Birds of Prey Aviaries	A. E. Scrivener
Antelope House	J. W. Shelley
Monkey House	L. G. Smith
Camel House and Mappin Terrace	R. S. Smith
Pheasantry	E. L. Stimpson
Small Mammal House	H. W. Styles
Aquarium	H. L. Ward
Eastern Aviary	J. Ward

Head Keepers

A. J. Cotterill
J. Lambden
W. E. Peckett
T. W. Sangster
W. A. Swain

Head Nursing Attendant, Hos- pital and Quarantine Station .	A. T. Wilson
Head Attendant, Children's Zoo	Miss I. Daley

WHIPSNADE PARK

Superintendent	E. H. Tong, F.L.A.S.
Catering Manager	E. G. Rhodes
Assistant to Superintendent	E. D. Day
Head Gardener	R. Tully
Overseer	P. S. Bates
Head Keeper	A. E. Cole
Assistant Head Keeper	O. Chamberlain
Head Attendant Children's Zoo	Miss G. Impey

HONORARY CONSULTING STAFF

Honorary Parasitologist	Mrs. H. B. Fantham (Dr. Annie Porter), D.Sc., F.L.S.
Honorary Apiarist	H. J. C. Farmiloe
Honorary Consulting Ophthal- mologist	B. W. Rycroft, O.B.E., M.D., Ch.B., D.O.M.S., F.R.C.S.
Honorary Consulting Veterinary Surgeon	Professor G. H. Wooldridge, F.R.C.V.S.
Honorary Hydrologist	J. H. Oliver, Ph.D., F.R.I.C.
Honorary Veterinary Surgeon (Whipsnade)	Martin Senior, M.R.C.V.S.
Honorary Consultant	Geoffrey M. Vevers, F.R.C.S.

At Regent's Park the staff was employed as follows :

Menagerie, General	164
Works Maintenance	42
Gardening	14
Scientific (Library and Laboratories)	14
Catering	107
Administration, Main Offices	21
	—
Total	362

At Whipsnade Park the staff was employed as follows :

Menagerie, General	56
Works maintenance	18
Farm and Garden	12
Catering	18
Administration	15
	—
Total	119

APPENDIX II.

LIST OF GENERA, SPECIES AND SUBSPECIES NEW TO THE COLLECTION.—59 new genera, species and subspecies were added to the collection in the year as compared with 54 in 1955. (The figures placed before each name indicate its approximate position in the current Vertebrate List.)

GENERA NEW TO THE COLLECTION

Mammals

ORDER LIPOTYPHLA

163b *Echinosorex gymnurus* (Raffles). Moon Rat

ORDER RODENTIA

485b *Holochilus brasiliensis berbicensis* M. Scott. Red Marsh Rat

486c *Rhipidomys venezuelae nitela* Thomas. Guiana Long-tailed Tree Rat

499d *Thallomys nigricauda* Thomas. East African Tree Rat

Birds

ORDER PASSERIFORMES

505c *Rowettia goughensis* (E. Clarke). Gough Island Bunting

543a *Lophospingus pusillus* (Burmeister). Black-crested Finch

800b *Babax lanceolatus* (Verreaux). Lanceolated Babbler

ORDER APODIFORMES

986i *Melanotrochilus fuscus* (Vieillot). Pied Jacobin Humming Bird

Reptiles

ORDER SAURIA

- 165e *Hemitheconyx taylori* Parker. Taylor's Gecko
 253a *Draco volans* Linné. Common Flying Lizard
 297f *Brookesia platiceps* (Guenther). Flat-headed Short-tailed Chameleon
 389a *Pholidobonus montium* (Peters)
 421b *Ophiodes striatus* Wagler. Legless Lizard
 427a *Platysaurus guttatus* A. Smith

ORDER SERPENTES

- 486c *Thalerophis richardi marginatus* (Cope)
 493a *Hemirhagerrhis nototaenia* Guenther. Cape Many-spotted Snake
 615a *Ditypophis vivax* Guenther. Socotran Snake
 676a *Boulengerina stormsi* Dollo. Storm's Water Cobra

Amphibians

ORDER APODA

- 1c *Schistometopum thomense* (Bocage). Yellow Coecilian

ORDER GRADIENTIA

- 28a *Batrachoseps attenuatus* (Eschscholtz). Californian Slender Salamander
 28b *Batrachoseps pacificus* (Cope). Pacific Slender Salamander

SPECIES AND SUBSPECIES NEW TO THE COLLECTION

Mammals

- 163b *Echinosorex gymnurus* (Raffles). Moon Rat. Malaya
 402a *Petaurista magnificus* (Hodgson). Hodgson's Flying Squirrel. (Nepal, Sikkim)
 485b *Holochilus brasiliensis berbicensis* M. Scott. Red Marsh Rat
 486c *Rhipidomys venezuelae nitela* Thomas. Guiana Long-tailed Tree Rat. British Guiana
 499d *Thallomys nigricauda* Thomas. East African Tree Rat. Kenya
 501a *Mus triton* Thomas. Large Pygmy Mouse. Nyasaland
 507f *Rhabdomys pumilio nyasae* (Wroughton). Nyasaland Striped Mouse. Nyasaland
 519e *Lophuromys flavopunctatus zena* Dollman. East African Speckled Harsh-furred Rat. Kenya
 535b *Meriones persicus* Blanford. Persian Jird. (Western Asia)

Birds

- 505c *Rowettia goughensis* (E. Clarke). Gough Island Bunting. Gough Island
 543a *Lophospingus pusillus* (Burmeister). Black-crested Finch (South-eastern South America)
 649b *Parus cinereus commixtus* Swinhoe. Chinese Grey-backed Tit. (Eastern China)

- 670c *Lanius schach* Linné. Chinese Rufous-backed Shrike. (Eastern Asia)
- 673b *Lanius cristatus superciliosus* Latham. Japanese Red-tailed Shrike. (Eastern and South-eastern Asia)
- 769a *Cossypha bicolor* (Gmelin). Noisy Robin Chat. (Southern Africa)
- 800b *Babax lanceolatus* (Verreaux). Lanceolated Babbler. (Eastern Asia)
- 803a *Trochalopteryx sukatschewi* Berezowski & Bianchi. Kansu Babbler. (North-western China)
- 833b *Psittiparus gularis fokiensis* (A. David). Fohkein Grey-headed Crow-Tit. (South-eastern China)
- 863d *Cyornis pallipes hainana* (Ogilvie-Grant). Hainan Blue Flycatcher. (Eastern Asia)
- 937b *Dendrocopus major cabanisi* (Malherbe). Chinese Pied Woodpecker. (Eastern Asia)
- 951 *Eudynamis scolopacea chinensis* Cabanis & Heine. Chinese Koel (Western and Southern China)
- 986i *Melanotrochilus fuscus* (Vieillot). Pied Jacobin Humming Bird. (Eastern Brazil)
- 1103a *Aratinga finschi* (Salvin). Finsch's Conure. (Central America)
- 1948a *Porphyriornis comeri* Allen. Gough Island Coot. Gough Island
- 2104a *Oreopeleia chiriquensis* (Sclater). Chiriqui Ground Dove. (Central America)
- 2160d *Alectoris graeca werae* (Zarudny and Loudon). Persian Chukor. Iraq
- 2246a *Gallus gallus jabouillei* Delacour & Kinnear. Jabouille's Jungle Fowl. (Northern Indo-China)
- 2248a *Syrmaticus soemmerringi scintillans* (Gould). Scintillating Copper Pheasant. (Island of Hondo)

Reptiles

- 165d *Stenodactylus petrii* Anderson. Petrie's Gecko. (North Africa)
- 165e *Hemitheconyx taylori* Parker. Taylor's Gecko. Somaliland
- 253a *Draco volans* Linné. Common Flying Lizard. (Malaya and Indonesia)
- 255a *Calotes jubatus* (Dumeril & Bibron). East Indian Chameleon Lizard. (South-east Asia)
- 288a *Chamaeleon monachus* Gray. Monk Chameleon. Socotra
- 297f *Brookesia platiceps* (Guenther). Flat-headed Short-tailed Chameleon. Nyasaland
- 389a *Pholidobolus montium* (Peters). Lizard. (Andes of Ecuador)
- 421b *Ophiodes striatus* Wagler. Legless Lizard. Paraguay
- 427a *Platysaurus guttatus* A. Smith. Lizard. Rhodesia.
- 486c *Thalerophis richardi marginatus* (Cope). Snake. Paraguay
- 493a *Hemirhagerrhis nototaenia* Guenther. Cape Many-spotted Snake. East Africa
- 615a *Ditypophis vivax* Guenther. Socotran Snake. Socotra
- 676a *Boulengerina stormsi* Dollo. Storm's Water Cobra. Tanganyika
- 705a *Bitis worthingtoni* Parker. Worthington's Viper. Kenya

- 730a *Crotalus viridis helleri* Meek. South Pacific Rattlesnake (South-western California)
 735b *Crotalus mitchelli pyrrhus* Cope. South-western Speckled Rattlesnake. (South-western United States of America)

Amphibians

- 1c *Schistometopum thomense* (Bocage). Yellow Coecilian. São Tome, Gulf of Guinea
 28a *Batrachoseps attenuatus* (Eschscholtz). Californian Slender Salamander. (Pacific Coast, U.S.A.)
 28b *Batrachoseps pacificus* (Cope). Pacific Slender Salamander. (Pacific Coast and Islands, U.S.A.)
 33a *Aneides flavopunctatus* (Strauch). Pacific Black Salamander. (Pacific Coast, U.S.A.)
 72b *Pseudophryne corroboree* Moore. Corroboree Frog. (Australia)
 148a *Hyperolius viridiflavus* (Dumeril & Bibron). Golden Variegated Tree Frog. (Tropical Africa)
 161b *Breviceps adpersus* Peters. Speckled Pig Toad. Swaziland.

Fishes

- Myliobatis aquila* Linné. Eagle Ray. N.E. Atlantic.
Anostomus trimaculatus (Kner). Three-spot Anostomus. Guianas and Amazon Basin
Leporinus friderici (Bloch). South America
Nothobranchius neumanni (Hilgendorf). East Africa
Ctenopharyngodon idellus (Valenciennes). Grass Carp. China
Oryzias javanicus (Bleeker). Medaka or Rice Fish. Java
Channallabes apus (Guenther). Eel Catfish. Congo and Angola
Labeo bicolor Smith. Red-tailed Shark. Siam

APPENDIX III.

LIST OF DONORS OF ANIMALS TO REGENT'S PARK

- Acason, S., 1 Firemouth Cichlid
 Addicott, Mr., 1 British Song Thrush
 Agriculture, Fisheries & Food, The Ministry of, 3 European Squirrels, 1 Madiana Tree Frog
 Ahn, P. M., 1 Bristly Squirrel
 Alan Robertson Organisation, 1 Grey Fox
 Allan, F. M., 1 Common Fire Finch, 2 Avadavat Finches, 2 Java Sparrows, 3 Common Waxbills, 5 Orange-cheeked Waxbills, 1 Golden-breasted Waxbill, 1 Crimson-eared Waxbill
 Allen, E., 1 Flap-necked Chameleon
 Anthill, Mrs. E., 1 Rough Terrapin
 Antwerp, The Royal Zoological Society of, 2 L'hoest's Monkeys
 Anwyl, W. Evan, 1 Taylor's Gecko
 Archer, Mr., 1 Green Toad, 1 South American Yellow Toad
 Attwell, T., 2 Armoured Zonures

- Babonau, D., 1 Orange-cheeked Waxbill, 6 Goldfish
 Backland, George, 2 American Black Snakes
 Barkley, R., 1 Common Bream
 Bassett, A., 2 Coucha Rats
 Bassett, W., 1 Barbary Striped Mouse
 Belton, Master D. J., 2 Brazilian Tortoises
 Bermuda, The Government Aquarium and Museum, 6 South Albemarle
 Tortoises, 5 Giant Green Moray Eels
 Biddle, Miss, 1 Greek Tortoise
 Blacker, N. J., 1 Common Carp
 Bloom, Miss Ann and Master Ronald, 2 Greek Tortoises
 Boulton, Vivian, 2 Greek Tortoises
 Brignall, R. L., 1 Lar Gibbon
 British Broadcasting Corporation, Television Service, 2 Orang Utans, 1 Indian
 Leopard Cat, 2 Masked Palm Civets, 2 Black-winged Grackles, 1 Turquoise
 Fairy Bluebird, 5 Blue-crowned Hanging Parrakeets, 1 Red-crested Wood
 Quail, 1 Bornean Fire-backed Pheasant, 1 Great House Gecko, 1 East
 Indian Chameleon Lizard, 1 Two-banded Monitor, 1 Indian Python,
 1 Green Pit Viper.
 British Overseas Airways Corporation, 18 Anemone-haunting Coral Fish
 British Petroleum Company, 1 Horned Cerastes Viper
 Broadley, D. C., 2 Wahlberg's Geckoes, 3 Bibron's Clawless Geckoes, 1 Flap-
 necked Chameleon, 2 African Blue-tailed Skinks, 1 Lizard (*Platysaurus*
guttatus), 1 Boomslang, 1 Egyptian Cobra
- Calvert, Captain P. R. C., 6 Coypu Rats
 Cambridge Mlanje (Nyasaland) Expedition 1956, 1 Coucha Rat, 5 Large
 Pygmy Mice, 3 Nyasaland Striped Mice, 5 Tullberg's Rats, 1 Fat Mouse,
 5 Aquiline Mice, 1 Flat-headed Short-tailed Chameleon
 Canada, The Department of Internal Affairs and Northern Province, 1
 Northern Lynx, 2 Big-horned Sheep
 Cansdale, G. S., 10 Salmon (smolts)
 Channing, Mrs., 1 Chestnut-breasted Finch, 1 Orange-cheeked Waxbill,
 1 Silver-eared Mesia
 Chaplin, J. P., 1 Flap-necked Chameleon
 China, The Zoological Society of, 1 Mandarin Duck, 2 Chinese Alligators,
 1 Giant Salamander
 Clark, Mr., 1 Virginian Cardinal
 Clères, Parc Zoologique de, 1 Mikado Pheasant
 Coates, Sir Clive Milnes-, 1 Common Teal
 Cole, H. F., 1 Senegal Galago
 Conran, Dr. O. F., 1 Chimpanzee
 Cooke, Mrs. E. S., 2 Greek Tortoises
 Cox, H. M., 1 Greek Tortoise
 Crosthwaite, Mrs. Ivor, 1 Marmoset
 Cumming, Mrs. A., 1 European Hare
 Customs, Her Majesty's, 11 Red-faced Lovebirds, 16 Fischer's Lovebirds
- Day, J. W., 1 Sclater's Spot-nosed Monkey
 Dean, Miss Monica, 1 European Pond Tortoise
 Deutsch, J. A., 6 Polecat-Ferrets
 Dockrell, B. C., 1 Black-cheeked White-nosed Monkey, 2 White-collared
 Mangabeys
 Drain, Miss I., 1 Greek Tortoise
 Dudley Zoological Society Limited, The, 1 Thick-tailed Dormouse

- Elkan, Dr. E., 2 Common Asiatic Toads, 4 Marsh Frogs
 Elsmore, Major, 1 Donkey
 Emmens, Professor C. W., 12 Corroboree Frogs
- Farris, G. W., 6 Californian Slender Salamanders, 2 Pacific Slender Salamanders, 2 Pacific Black Salamanders
 Ferguson, J. D., 1 Red-necked Grebe
 Fitzsimmons, Dr. W. M., 1 Bell's Hinged Tortoise, 1 African Python, 2 Common African Toads, 3 Braided Tree Frogs, 1 Pig Toad, 1 Speckled Pig Toad
 Fox, Professor H. Munro, F.R.S., 1 Corkwing Wrasse
 Frampton, Mrs. Doris L., 1 Black-pencilled Marmoset
 Freeman, R. B., 2 Common Waxbills
 Freshwater Biological Association, 50 Windermere Char (Ennerdale form)
 Friedman, The Misses Ulia and Nora, 2 Greek Tortoises
 Funnell, J., 1 Cheetah
- Gaillard, L., 1 Great Condor
 Gardiner, Dr. J. E., 1 Velvet Scoter
 Garnham, J. M., 2 Peters's Pygmy Mongooses
 Gates, R., 1 Pekin Robin
 Gemmel, Mrs. Ann, 1 Canary
 Gibson, D. B., 4 Budgerigars
 Gilbert, Miss V. J., 3 South American Ornate Terrapins
 Gomme, Mrs. E. D., 1 Hooded Skunk
 Goodwin, D., 4 Ceylonese Necklace Doves
 Gough Island Scientific Survey, 10 Gough Island Buntings, 12 Gough Island Coots, 6 Antarctic Skuas, 12 Rock-hopper Penguins
 Greenwood, Dr. P. H., 7 Heckel's African Lungfish
 Gritt, A. E., 1 Spotted Flycatcher
 Grumball, T. H., 1 Silky Starling
- Haddow, Dr. A. J., 1 Nisnas Monkey, 2 Grey-cheeked Mangabeys, 1 Bosman's Potto
 Hakki, His Excellency Ismail, 2 Great Bustards, 3 Eastern Pin-tailed Sand Grouse, 1 Black-bellied Sand Grouse, 4 Persian Chukors
 Hallums, A. R., 12 Guinea Pigs
 Hamilton' Hamish, 1 West African House Snake, 1 Peters' Green Snake, 1 Herald Snake
 Harrison, Professor R. G., M.A., M.D., 30 Madiana Tree Frogs
 Harrods Limited, 1 Sooty Mangabey
 Hawkins, Mrs. V., 1 Red-rumped Parrakeet
 Hazel, G., 2 Budgerigars
 Henic, Master M., 1 Spanish Terrapin, 1 European Pond Tortoise, 2 Pleurodele Newts
 Hickling, Dr. C. F., C.M.G., 1 Grass Carp
 Hills, Peter L., 2 Weasels
 Hinton, Martin A. C., F.R.S., 1 Kestrel
 Hipkin, J., 1 Lobster
 Hodgman, Mr. and Mrs. S. F. J., 1 Common Seal
 Hook, Raymond, C.M.Z.S., 2 Puff Adders
 Hook, Raymond, C.M.Z.S., and Seago, John, 1 Ground Hornbill
 Horwood, M. T., 1 Hooded Vulture
 House, F. H., 2 Cockatiels
 Hunt, A. E., 1 Rabbit
 Hutchinson, Miss P., 1 Greek Tortoise

- Ilse, Dr. Dora, 1 Slender Loris
 Ionides, C. J. P., C.M.Z.S., 3 Boomslang, 2 Storm's Water Cobras, 1 Black Mamba, 2 Puff Adders
 Irving, C. J., 1 Purple-headed Glossy Starling
- Jay, Peter, 1 Greek Tortoise
 Johore, His Highness the Sultan of, 4 Tigers
 Jones, I. Ll., 1 Fox
 Jones, L. W. R., 1 Green-cheeked Parrot
 Jones, T. S., 1 Serval
 Jordan, Mrs. H. D., 1 Crested Porcupine
- Kay, N., 1 Cheetah
 Kaye, Mrs. Susan, 1 Flap-necked Chameleon
 Kelly, Gerrard F., 1 Petrie's Gecko, 1 Egyptian Changeable Lizard, 3 Bell's Dabb Lizards, 2 Red-spotted Lizards
 Knight, Maxwell, O.B.E., 1 Buzzard, 1 Argus Gecko
 Knobel, Miss E. M., 1 Malabar Myna
- Laloe, Mrs. J., 1 Lar Gibbon
 Leakey, Dr. L. S. B., C.M.Z.S., 2 Worthington's Vipers, 3 *Nothobranchius neumanni*
 Leney, Maurice, 1 Brown Trout
 Lewis, D. A., 1 Flap-necked Chameleon
 Longhurst, Alan, 1 African Civet Cat, 1 African Woolly-necked Stork
- McTurk, E., 2 Guiana Long-tailed Tree Rats, 8 Black-throated Cardinals
 Major, E., 1 Kestrel
 Martinnant, A. E. B., 2 Fishing Cats
 Maxwell, Miss B., 1 Budgerigar
 Memery, Captain R. R., 1 Korin Gazelle
 Meston, H. F., 1 Tiger
 Miller, J. G., 1 Spider Crab, 1 Conger Eel
 Mitchell, B. L., C.M.Z.S., 12 Tree Frogs (*Hyperolius* sp.)
 Monighan, Mrs., 1 Barbary Ground Squirrel
 Mountain, H., 1 Bronze-winged Mannikin
- Neale, Bryan, 4 Guinea Pigs
 Newmark, G. H., 1 Silvery Gibbon, 1 Black-winged Grackle, 1 Malaysian Black-naped Oriole, 2 Superb Tanagers, 3 Virginian Cardinals, 2 Red-crested Cardinals, 1 Chinese Jay Thrush, 1 Malachite-shouldered Fruit-sucker, 1 Golden-fronted Barbet, 1 Two-banded Monitor, 2 Indian Wolf Snakes, 1 Painted Tree Snake, 1 Guenther's Bronze-backed Snake, 1 Emerald Tree Snake
 Newmark, J. R., 2 Orange Weaver Birds, 2 Black-crested Finches, 3 Golden-winged Sunbirds
 New Zealand, Department of Internal Affairs, 1 Tuatara
 Nicholl, J. H., 2 Flap-necked Chameleons
- Oliver, F., 1 Tinsel Barb
- Paignton Zoological and Botanical Garden Limited, 2 Maroon Tanagers
 Palmer, A., 8 Bridled House Geckoes, 1 Long-nosed Tree Snake
 Parton, Mr., 1 Lapwing
 Percival, Edwin, 1 Flap-necked Chameleon

- Pernice, Miss S. O., 1 Roloway Monkey
 Perrie, W. J., 1 Harlan's Horned Lizard
 Perry, E. O., 1 Spanish Terrapin
 Petter, Dr. F., 1 Ethiopian Hedgehog, 2 Persian Jirds, 2 Fat-tailed Gerbils
 Phillips, Mr., 4 Blue Acara
 Phillips, Eric J., c.m.z.s., 1 Broad-snouted Cayman, 4 Great Tegus, 2 Legless
 Lizards (*Ophiodes striatus*), 1 Snake (*Thalerophis richardi marginatus*), 1
 Merrem's Boipeva Snake, 1 Merrem's Water Snake, 1 Reinhardt's Tree
 Snake, 3 Crossed Vipers, 2 South American Yellow Toads, 1 Giant Toad,
 2 Frogs (*Leptodactylus* sp.)
 Pilcher, Miss, 2 Green Singing Finches
 Pocock, Mrs. M. E., 1 Yellow-fronted Parrot
 Polkinghorne, A. S., 2 Goldfinches, 1 Canary, 1 Canary (White variety)
 Poupart Limited, T. J., 1 Cenchoa Snake
 Power, R. V., 1 Sooty Mangabey
 Prestwich, A. A., 1 Finsch's Conure

 Rae, Mrs. B. R., 30 Budgerigars
 Rance, W. A., 1 Toque Monkey
 Rata, Mrs., 1 Goat
 Ray, Mrs. J., 1 Oriental Jackal
 Read, Miss, 1 Avadavat Finch
 Richards, R. Astley, 2 Diamond Ground Doves
 Riley, Mrs. B. M., 2 Fat Sand Rats
 Riley, J., 1 Spanner Barbet
 Rose, Mrs. W. A., 4 Spurrell's Dormice
 Royal Hampshire Regiment, The, 1st Battalion, 2 Tigers

 Scotland, The Royal Zoological Society of, 2 Egyptian Cobras
 Scott, Peter M., c.B.E., D.S.C., 1 British Green Woodpecker, 10 Margouillat
 Lizards, 2 Two-banded Chameleons, 1 Cape Many-spotted Snake,
 2 Common African Toads, 2 Dumeril's Frogs, 1 Lake Galam Frog, 18
 Golden Variegated Tree Frogs
 Searle, Dr. K. C., c.m.z.s., 1 Black-necked Grackle, 3 Eastern Greenfinches,
 1 Chinese Grey-backed Tit, 1 Chinese Rufous-backed Shrike, 1 Japanese
 Red-tailed Shrike, 1 Grey Thrush, 1 Ruby-throated Warbler, 1 Chinese
 Dial Bird, 1 Lanceolated Babbler, 2 Kansu Babblers, 1 White-browed
 Laughing Thrush, 2 Masked Jay Thrushes, 3 Fohkein Grey-headed Crow-
 Tits, 2 Hainan Blue Flycatchers, 2 Narcissus Flycatchers, 2 Japanese Blue
 Flycatchers, 2 Chinese Pied Woodpeckers, 2 Chinese Koels, 2 Indian
 Coucals, 2 Bare-footed Scops Owls, 2 Black-crested Cuckoo-Falcons, 2 Little
 Egrets, 2 Water Cocks, 1 Wallace's Fruit Pigeon, 4 Blood-breasted Pigeons
 Seggar, Mrs. Daphne, 1 Squirrel Monkey, 1 Ocelot, 1 Great Green Cacique,
 2 Glossy Cowbirds, 2 Golden-headed Marsh Birds, 3 Violet Tanagers,
 12 Guiana Parrotlets, 2 Black-headed Caiques
 Short, D. J., 2 Cotton Rats
 Simmonds, Dr. F. J., 20 Yellow Coecilians
 Smith, Dr. A., 1 Dark Rat Kangaroo
 Smith, Mrs. K. Prentis, 2 Lizards (*Pholidobolus montium*)
 Snowden, Bob, 5 Mississippi Alligators
 Stewart, Mrs. A. M., 1 Aubry's Parrot
 Stone, F., 1 Ring-necked Parrakeet
 Strelley, S. L., 6 Common Rudd
 Styles, H. W., 1 European Hedgehog
 Sumner, Miss Diana, 1 Virginian Cardinal
 Supply, The Ministry of, 1 Royal Python

Tittenson, Master H., 1 Bronze-winged Mannikin
 Turner, F., 1 Gerbil (Sp. inc.), 4 Greater Egyptian Jerboas
 Turner, M., 1 Garden Dormouse

Uckermann, J., 4 Midwife Toads

Wagstaff, Mrs. K. M., 7 Guinea Pigs
 Walker, Mr. and Mrs., 1 Great-billed Touraco
 Warburg, N. R., 4 Syrian Spade-foot Frogs
 West, B. T., 1 Blue-fronted Parrot
 Whipple, Mrs. E., 4 Golden Hamsters (White variety)
 Williams, Mrs. M. P., 1 Blue-and-Yellow Macaw
 Wright, C. E. J., 1 Jay
 Wright, Mr. and Mrs. J., 1 West African Wood Owl
 Wright, R. A., M.R.C.V.S., 3 Kuhl's Deer

Yeates, R., 10 Black Mollies
 Yellow Fever Research Institute, Entebbe, The Director, 1 Marsh Mongoose
 Young, Professor J. Z., F.R.S., 3 Common Flying Lizards, 1 Ornate Tree Snake
 Young, W., 1 Brown Capuchin Monkey

Zitman, I. G., 1 Magpie Tanager

APPENDIX IV.

LIST OF ANIMALS BORN AT REGENT'S PARK

(The figure in brackets following an item indicates the number which have died)

Mammals

1 Mandrill	2 European Hares (1)
1 Black-pencilled Marmoset	1 American Bison
3 Tigers	30 Domestic Sheep
*3 Mexican Hairless Dogs (1)	5 Mouflon (1)
4 Dingoes	4 Barbary Wild Sheep (1)
2 Syrian × Brown Bears	33 Goats (1)
1 Californian Sea Lion	2 Impala (1)
3 Golden Hamsters	1 Saiga Antelope
5 Nilgiri Long-tailed Tree Mice	1 Giraffe
3 Savannah Rats (2)	1 Reticulated Giraffe (1)
1 Cape Pouched Rat	1 Fallow Deer
4 North African Long-tailed Field Mice	1 Kuhl's Deer
2 Variegated Agoutis	1 Llama
4 Chinchillas (2)	1 Bennett's Wallaby (1)
33 Guinea Pigs	†4 Rat-tailed Opossums (1)

* On deposit.

† It is probable that these were already in the mother's pouch on arrival.

Birds

2	Canaries	1	Black-footed Penguin
2	Swainson's × Red-collared Lorikeets	1	Black Crake
2	Green-winged King Parrakeets	1	Green-backed × Grey-headed Gallinule
8	Masked Lovebirds (Blue bred)	1	Sierra Leone Green Pigeon (1)
7	Masked Lovebirds (Blue variety)	3	Crested Pigeons
56	Budgerigars (3)	4	Black Kalij Pheasants (1)
6	Cockatiels	3	Chinese Silver Pheasants
3	Cereopsis Geese (1)	2	Swinhoe's Pheasants
4	Upland Geese	1	Reeves's Pheasant
6	Egyptian Geese	5	Golden Pheasants (1)
1	Silver Gull	10	Lady Amherst's Pheasants (2)
4	Great Black-backed Gulls	1	Sonnerat's Jungle Fowl
2	Lesser Black-backed Gulls	3	Common Peafowl
3	Herring Gulls	4	Common Peafowl (White variety)
2	King Penguins	1	Black-winged Peafowl

Reptiles

4	Say's King Snakes (3)	3	Puff Adders (1)
1	Emerald Tree Snake (1)		

APPENDIX V.

LIST OF ANIMALS RECEIVED AT REGENT'S PARK

(Presented, Purchased, Received in Exchange, Deposited and Born in the Menagerie)

Mammals

Order Primates

14	Chimpanzees
2	Orang Utans
2	Lar Gibbons
1	Silvery Gibbon
1	Roloway Monkey
2	L'hoest's Monkeys
1	Black-cheeked White-nosed Monkey
2	Moustached Monkeys
1	Sclater's Spot-nosed Monkey
1	Nisnas Monkey
2	Sooty Mangabeys
2	White-collared Mangabeys
2	Grey-cheeked Mangabeys
1	Toque Monkey
2	Lion-tailed Monkeys
1	Olive Baboon
1	Mandrill
1	Humboldt's Saki Monkey
2	White-headed Saki Monkeys
1	Squirrel Monkey
1	Brown Capuchin Monkey

1	Marmoset
2	Black-pencilled Marmosets
1	Slender Loris
1	Bosman's Potto
1	Senegal Galago

Order Lipotyphla

1	Moon Rat
2	European Hedgehogs
1	Ethiopian Hedgehog

Order Carnivora

10	Tigers
1	Leopard
1	Jaguar
1	Northern Lynx
2	Servals
1	Indian Leopard Cat
2	Fishing Cats
1	Clouded Leopard
1	Ocelot
3	Cheetahs
1	African Civet Cat

- 2 Masked Palm Civets
- 1 Marsh Mongoose
- 2 Peters's Pygmy Mongooses
- 5 Mexican Hairless Dogs
- 4 Dingoes
- 1 Oriental Jackal
- 1 Fox
- 1 Grey Fox
- 2 Maned Wolves
- 1 European Otter
- 2 Weasels
- 6 Polecat-Ferrets
- 2 Hooded Skunks
- 1 Cacomistle
- 2 Crab-eating Raccoons
- 1 Ring-tailed Coati
- 2 Syrian × Brown Bears
- 1 Syrian Bear

Order Pinnipedia

- 1 Californian Sea Lion
- 1 Common Seal

Order Rodentia

- 1 Hodgson's Flying Squirrel
- 3 European Squirrels
- 1 Barbary Ground Squirrel
- 1 Bristly Squirrel
- 1 Garden Dormouse
- 1 Thick-tailed Dormouse
- 4 Spurrell's Dormice
- 2 Cotton Rats
- 14 Golden Hamsters
- 4 Golden Hamsters (White variety)
- 1 Red Marsh Rat
- 5 Nilgiri Long-tailed Tree Mice
- 2 Guiana Long-tailed Tree Rats
- 5 Savannah Rats
- 3 Coucha Rats
- 1 African Tree Rat
- 7 East African Tree Rats
- 5 Large Pygmy Mice
- 1 Barbary Striped Mouse
- 3 Nyasaland Striped Mice
- 1 Cape Pouched Rat
- 5 Tullberg's Rats
- 1 Fat Mouse
- 5 Kenya Spiny Mice (*Acomys* sp.)
- 4 North African Long-tailed Field Mice
- 5 Aquiline Mice
- 9 East African Speckled Harsh-furred Rats

- 2 East African Gerbils (*Tatera* sp.)
- 3 Gerbils (unidentified)
- 2 Persian Jirds
- 2 Fat-tailed Gerbils
- 2 Fat Sand Rats
- 4 Greater Egyptian Jerboas
- 1 Crested Porcupine
- 3 Brazilian Tree Porcupines
- 6 Coypu Rats
- 2 Variegated Agoutis
- 4 Chinchillas
- 56 Guinea Pigs

Order Lagomorpha

- 3 European Hares
- 2 Rabbits

Order Perissodactyla

- 1 Donkey

Order Artiodactyla

- 2 European Bison
- 1 American Bison
- 30 Domestic Sheep
- 2 Big-horned Sheep
- 5 Mouflon
- 4 Barbary Wild Sheep
- 34 Goats
- 1 Kongoni
- 4 Blesbok
- 3 White-bearded Gnu
- 1 Northern Waterbuck
- 2 Impala
- 2 Saiga Antelopes
- 1 Korin Gazelle
- 1 Gerenuk
- 1 Giraffe
- 1 Reticulated Giraffe
- 1 Fallow Deer
- 4 Kuhl's Deer
- 1 Llama
- 6 Guanaco
- 2 Alpacas
- 1 Vicuna

Order Marsupialia

- 1 Bennett's Wallaby
- 1 Nine-banded Armadillo
- 1 Dark Rat Kangaroo
- 7 Rat-tailed Opossums

Order Passeriformes

- 1 Jackdaw
- 1 Jay
- 4 Satin Bower Birds
- 1 Silky Starling
- 1 Malabar Myna
- 2 Golden-crested Mynas
- 1 Black-necked Grackle
- 3 Black-winged Grackles
- 1 Southern Hill Myna
- 1 Purple-headed Glossy Starling
- 1 Malaysian Black-naped Oriole
- 1 Great Green Caciue
- 2 Glossy Cowbirds
- 2 Golden-headed Marsh Birds
- 2 Yellow-crowned Troupials
- 2 Orange Weaver Birds
- 12 Napoleon Weaver Birds
- 6 Red-headed Weaver Birds
- 13 Bronze-winged Mannikins
- 1 Common Fire Finch
- 1 Cut-throat Finch
- 2 Zebra Finches
- 3 Avadavat Finches
- 2 Java Sparrows
- 1 Three-coloured Mannikin
- 2 Chestnut-breasted Finches
- 1 Nutmeg Finch
- 3 Striated Finches
- 2 Cherry Finches
- 4 Long-tailed Grass Finches
- 2 Parson Finches
- 5 Gouldian Finches
- 5 Common Waxbills
- 7 Orange-cheeked Waxbills
- 1 Golden-breasted Waxbill
- 1 Crimson-eared Waxbill
- 3 Violet Tanagers
- 2 Superb Tanagers
- 1 Blue Tanager
- 2 Maroon Tanagers
- 1 Magpie Tanager
- 1 Yellow-winged Sugar Bird
- 3 Eastern Greenfinches
- 5 Virginian Cardinals
- 3 Goldfinches
- 9 Canaries
- 2 Canaries (White variety)
- 2 Green Singing Finches
- 10 Gough Island Buntings
- 2 Black-crested Finches
- 2 Red-crested Cardinals
- 8 Black-throated Cardinals
- 3 Golden-winged Sunbirds
- 1 Cape Sugar Bird

- 1 Chinese Grey-backed Tit
- 1 Chinese Rufous-backed Shrike
- 1 Japanese Red-tailed Shrike
- 5 British Song Thrushes
- 1 Grey Thrush
- 1 Blue Whistling Thrush
- 1 Ruby-throated Warbler
- 1 Chinese Dial Bird
- 1 Indian Shama
- 1 Noisy Robin Chat
- 1 Lanceolated Babbler
- 1 Melodious Jay Thrush
- 2 Kansu Babblers
- 1 Chinese Jay Thrush
- 1 White-browed Laughing Thrush
- 2 Masked Jay Thrushes
- 1 Pekin Robin
- 1 Silver-eared Mesia
- 3 Fohkein Grey-headed Crow-Tits
- 1 Malachite-shouldered Fruit-sucker
- 1 Turquoise Fairy Bluebird
- 1 Spotted Flycatcher
- 2 Hainan Blue Flycatchers
- 2 Narcissus Flycatchers
- 2 Japanese Blue Flycatchers
- 2 Sulphury Tyrants

Order Piciformes

- 2 Chestnut-eared Aracaris
- 1 Golden-fronted Barbet
- 2 Chinese Pied Woodpeckers
- 1 British Green Woodpecker

Order Coccoyiformes

- 2 Chinese Koels
- 2 Indian Coucals
- 1 Great-billed Touraco

Order Apodiformes

- 4 Blue-breasted Humming Birds
- 3 White-throated Sapphire Humming Birds
- 1 Pucheran's Emerald Humming Bird
- 1 Red-throated Sapphire Humming Bird
- 4 Pied Jacobin Humming Birds
- 2 Ruby-throated Humming Birds

- 4 Waterton's Wood Nymph Humming Birds
 1 Black-tailed Emerald Humming Bird
 1 White-bellied Emerald Humming Bird
 4 Racquet-tail Humming Birds
 6 Ruby-and-Topaz Humming Birds
 1 Black-throated Mango Humming Bird
 1 Frilled Coquette
- Order Coraciiformes
 1 Ground Hornbill
- Order Psittaciformes
 2 Swainson's × Red-collared Lorikeets
 2 Blue-and-Yellow Macaws
 1 Green-winged Macaw
 1 Finsch's Conure
 12 Guiana Parrotlets
 1 Blue-fronted Parrot
 1 Yellow-fronted Parrot
 1 Red-crowned Parrot
 1 Green-cheeked Parrot
 2 Black-headed Caiques
 1 Aubry's Parrot
 2 Grey Parrots
 1 Ring-necked Parrakeet
 1 Rosy-headed Parrakeet
 3 Green-winged King Parrakeets
 11 Red-faced Lovebirds
 16 Fischer's Lovebirds
 8 Masked Lovebirds (Blue bred)
 7 Masked Lovebirds (Blue variety)
 9 Blue-crowned Hanging Parrakeets
 1 Red-rumped Parrakeet
 101 Budgerigars
 1 Greater Sulphur-crested Cockatoo
 1 Citron-crested Cockatoo
 8 Cockatiels
- Order Strigiformes
 1 West African Wood Owl
 2 Bare-footed Scops Owls
- Order Accipitriformes
 1 Hooded Vulture
 1 Buzzard
 2 Black-crested Cuckoo-Falcons
 2 Kestrels
- Order Cathartiformes
 2 Great Condors
 2 South American Black Vultures
- Order Anseriformes
 2 Mute Swans
 2 Black Swans
 1 Muscovy Duck
 1 Comb Duck
 3 Mandarin Ducks
 3 Cereopsis Geese
 4 Upland Geese
 2 White-faced Tree Ducks
 6 Egyptian Geese
 1 Common Teal
 1 Velvet Scoter
- Order Ardeiformes
 2 Little Egrets
 2 Tricolor Herons
 2 African Cattle Egrets
 2 Egrets (unidentified)
 1 African Woolly-necked Stork
 7 White Storks
- Order Charadriiformes
 4 Great Bustards
 8 Ruffs or Reeves
 1 Lapwing
 1 Black-headed Plover
- Order Lariformes
 6 Antarctic Skuas
 1 Silver Gull
 4 Great Black-backed Gulls
 2 Lesser Black-backed Gulls
 3 Herring Gulls
- Order Sphenisciformes
 2 King Penguins
 12 Rock-hopper Penguins
 1 Black-footed Penguin
- Order Podicipidiformes
 1 Red-necked Grebe
- Order Ralliformes
 2 Venezuelan Wood Rails
 1 Black Crake
 12 Gough Island Coots
 2 Water Cocks
 1 Green-backed × Grey-headed Gallinule

Order Columbiformes

- 1 Sierra Leone Green Pigeon
- 1 Wallace's Fruit Pigeon
- 4 Ceylonese Necklace Doves
- 2 Diamond Ground Doves
- 3 Crested Pigeons
- 2 Chiriqui Ground Doves
- 4 Blood-breasted Pigeons

Order Pterocletiformes

- 3 Eastern Pin-tailed Sand Grouse
- 1 Black-bellied Sand Grouse

Order Galliformes

- 4 Persian Chukors
- 1 Red-crested Wood Quail

- 1 Bornean Fire-backed Pheasant
- 4 Black Kalij Pheasants
- 3 Chinese Silver Pheasants
- 2 Swinhoe's Pheasants
- 1 Elliot's Pheasant
- 1 Mikado Pheasant
- 1 Reeves's Pheasant
- 2 Scintillating Copper Pheasants
- 5 Golden Pheasants
- 10 Lady Amherst's Pheasants
- 3 Jabouille's Jungle Fowl
- 1 Sonnerat's Jungle Fowl
- 3 Common Peafowl
- 4 Common Peafowl (White variety)
- 1 Black-winged Peafowl

Reptiles

Order Testudinata

- 3 South American Ornate Terrapins
- 2 Spanish Terrapins
- 2 European Pond Tortoises
- 1 Rough Terrapin
- 1 Bell's Hinged Tortoise
- 17 Greek Tortoises
- 6 South Albemarle Tortoises
- 2 Brazilian Tortoises

Order Loricata

- 1 Nile Crocodile
- 5 Mississippi Alligators
- 2 Chinese Alligators
- 1 Broad-snouted Cayman

Order Rhynchocephalia

- 1 Tuatara

Order Sauria

- 1 Petrie's Gecko
- 1 Taylor's Gecko
- 8 Bridled House Geckoes
- 1 Great House Gecko
- 2 Wahlberg's Geckoes
- 3 Bibron's Clawless Geckoes
- 1 Argus Gecko
- 2 Carolina Anolis Lizards
- 1 Harlan's Horned Lizard
- 3 Common Flying Lizards
- 1 East Indian Chameleon Lizard
- 1 Egyptian Changeable Lizard
- 10 Margouillat Lizards

- 3 Black-necked Agama Lizards
- 2 Bearded Lizards
- 3 Bell's Dabb Lizards
- 11 Flap-necked Chameleons
- 7 Monk Chameleons
- 2 Two-banded Chameleons
- 1 Flat-headed Short-tailed Chameleon
- 1 Southern Blue-tongued Skink
- 2 African Blue-tailed Skinks
- 2 Red-spotted Lizards
- 4 Great Tegus
- 2 Lizards (*Pholidobolus montium*)
- 2 Two-banded Monitors
- 1 Nile Monitor
- 1 Lace Monitor
- 2 Legless Lizards
- 2 Armoured Zonures
- 1 Lizard (*Platysaurus guttatus*)

Order Serpentes

- 5 African Pythons
- 2 Indian Pythons
- 1 Royal Python
- 1 Cooke's Tree Boa
- 4 Anacondas
- 2 Boa Constrictors
- 1 John's Sand Boa
- 1 Snake (*Thalerophis richardi marginatus*)
- 1 West African House Snake
- 2 Indian Wolf Snakes
- 1 Corais Snake
- 1 Lindheimer's Chicken Snake
- 2 American Black Snakes
- 1 Dark Green Snake

- | | |
|----------------------------------|--------------------------------------|
| 1 Painted Tree Snake | 2 Storm's Water Cobras |
| 1 Guenther's Bronze-backed Snake | 3 Egyptian Cobras |
| 1 Peters's Green Snake | 1 Indian Cobra |
| 1 Merrem's Boipeva Snake | 1 Black Mamba |
| 3 Hog-nosed Snakes | 7 Puff Adders |
| 1 Merrem's Water Snake | 1 Cape Puff Adder |
| 2 King Snakes | 2 Horned Puff Adders |
| 4 Say's King Snakes | 3 Worthington's Vipers |
| 2 Milk Snakes | 1 Horned Cerastes Viper |
| 2 Socotran Snakes | 1 Green Pit Viper |
| 1 Cenchoa Snake | 3 Crossed Vipers |
| 1 Herald Snake | 1 Two-lined Pit Viper |
| 1 Reinhardt's Tree Snake | 1 Western Diamond-back Rattlesnake |
| 1 Cape Many-spotted Snake | 2 South Pacific Rattlesnakes |
| 2 Emerald Tree Snakes | 1 Timber Rattlesnake |
| 1 Long-nosed Tree Snake | 1 South-western Speckled Rattlesnake |
| 4 Boomslangs | 1 Sidewinder |
| 1 Ornate Tree Snake | |

Amphibians

- | | |
|-----------------------------------|--|
| Order Apoda | 4 Common African Toads |
| 20 Yellow Coecilians | 2 Common Asiatic Toads |
| Order Gradientia | 3 South American Yellow Toads |
| 1 Giant Salamander | 1 Giant Toad |
| 2 Pleurodele Newts | 12 Corroboree Frogs |
| 6 Californian Slender Salamanders | 31 Madiana Tree Frogs |
| 2 Pacific Slender Salamanders | 2 Frogs (<i>Leptodactylus</i> sp.) |
| 2 Pacific Black Salamanders | 4 Marsh Frogs |
| Order Salientia | 2 Dumeril's Frogs |
| 4 Midwife Toads | 1 Lake Galam Frog |
| 4 Syrian Spade-foot Frogs | 3 Braided Tree Frogs |
| 1 Green Toad | 18 Golden Variegated Tree Frogs |
| | 12 Tree Frogs (<i>Hyperolius</i> sp.) |
| | 1 Pig Toad |
| | 1 Speckled Pig Toad |

APPENDIX VI.

LIST OF DONORS OF ANIMALS TO WHIPSNADE PARK

- Babonau, I., 4 Budgerigars
 Boswell, Professor Charles, 2 Great Bustards
- Coppin, Miss, 25 Budgerigars
 Corporation of London, The, 4 Fallow Deer
- Davies, T. T., 1 Blue-fronted Parrot
- Faulkner, Miss M. C., 20 Canaries (Red Factor)
 Forestry Commission, The, 1 Gannet
 Freeman, R. E., 2 Bengalee Finches, 1 Canary (Norwich), 13 Budgerigars

Johore, H. H. The Sultan of, 2 Tigers

National Parks Service, Ottawa, 2 Big-horned Sheep

Philadelphia, The Zoological Society of, 5 Prairie Marmots

Tanner, Mrs. W., 1 Dexter Bull

APPENDIX VII.

LIST OF ANIMALS BORN AT WHIPSNADDE PARK

(The figure in brackets following an item indicates the number which have died)

Mammals

4 Rhesus Monkeys (2)	3 Nylghaie
24 Husky Dogs	5 Muntjac
1 Timber Wolf	6 Fallow Deer
6 Brown Bears (1)	2 Spotted Deer
2 Central American Agoutis	1 Swamp Deer
7 Shetland Ponies	2 Sika Deer
2 cross-bred Ponies	13 Formosan Deer
1 Mongolian Wild Horse	10 Red Deer
1 East African Zebra	1 Wapiti Deer
1 Pygmy Donkey	3 Père David's Deer
1 Chartley Calf	25 Chinese Water Deer
4 Ankole Cattle (2)	1 Bactrian Camel
1 Yak	8 Llamas (1)
8 American Bison (1)	2 Collared Peccaries
7 Mouflon	1 Hippopotamus
2 Thomson's Gazelles	1 Wallaroo
3 East African Elands (1)	37 Bennett's Wallabies (1)

Birds

3 Yellow-headed Conures (1)	8 Canada Geese
1 Cockatiel	4 Upland Geese
2 Whooper Swans	2 Black-footed Penguins
9 Grey Lag Geese	3 Black-breasted Kalij Pheasants
1 Bar-headed Goose	5 Swinhoe's Pheasants (1)
5 Snow Geese	6 Golden Pheasants
4 Greater Snow Geese	8 Common Peafowl

APPENDIX VIII.

LIST OF ANIMALS RECEIVED AT WHIPSNADDE PARK

(Presented, Purchased, Received in Exchange, Deposited and Born in the Park)

Mammals

Order Primates

- 1 Lar Gibbon
- 4 Rhesus Monkeys

Order Carnivora

- 2 Tigers
- 3 Striped Hyaenas

- 24 Husky Dogs
- 1 Timber Wolf
- 2 Cape Hunting Dogs
- 3 Polar Bears
- 6 Brown Bears

Order Rodentia

- 2 Malabar Giant Squirrels
- 5 Prairie Marmots
- 2 Crested Porcupines
- 2 Central American Agoutis
- 4 Patagonian Cavies

Order Perissodactyla

- 7 Shetland Ponies
- 2 cross-bred Ponies
- 1 Mongolian Wild Horse
- 1 East African Zebra
- 1 Pygmy Donkey
- 1 Brazilian Tapir

Order Artiodactyla

- 1 Chartley Calf
- 1 Dexter Bull
- 4 Ankole Cattle
- 1 Yak

- 8 American Bison
- 2 Big-horned Sheep
- 7 Mouflon
- 2 Thomson's Gazelles
- 3 East African Elands
- 3 Nylghaie
- 5 Muntjac
- 10 Fallow Deer
- 2 Spotted Deer
- 1 Swamp Deer
- 2 Sika Deer
- 13 Formosan Deer
- 10 Red Deer
- 1 Wapiti Deer
- 5 Père David's Deer
- 1 Elk
- 25 Chinese Water Deer
- 1 Bactrian Camel
- 8 Llamas
- 2 Collared Peccaries
- 1 Hippopotamus
- 1 Pygmy Hippopotamus

Order Marsupialia

- 1 Wallaroo
- 37 Bennett's Wallabies

Birds

Order Passeriformes

- 2 Bengalee Finches
- 20 Canaries (Red Factor)
- 1 Canary (Norwich)

Order Coraciiformes

- 2 Ground Hornbills

Order Psittaciformes

- 1 Severe Macaw
- 3 Yellow-headed Conures
- 1 Blue-fronted Parrot
- 1 Racquet-tailed Parrot
- 42 Budgerigars
- 3 Cockatiels

Order Sagittariiformes

- 2 Secretary Birds

Order Pelecaniformes

- 1 Gannet
- 2 White Pelicans

Order Phoenicopteriformes

- 21 Chilian Flamingoes

Order Anseriformes

- 2 Whooper Swans
- 9 Grey Lag Geese
- 1 Bar-headed Goose
- 5 Snow Geese
- 4 Greater Snow Geese
- 2 Emperor Geese
- 8 Canada Geese
- 4 Upland Geese

Order Ardeiformes

- 2 Purple Herons
- 1 Marabou Stork

Order Charadriiformes

- 2 Great Bustards

Order Sphenisciformes

- 4 King Penguins

- 2 Black-footed Penguins
- 2 Humboldt's Penguins

- 5 Swinhoe's Pheasants
- 6 Golden Pheasants
- 8 Common Peafowl
- 2 Common Peafowl (White variety)

Order Galliformes

- 3 Black-breasted Kalij Pheasants

[Faint, illegible text, likely bleed-through from the reverse side of the page]

APPENDIX X.

BOOKS PRESENTED TO THE LIBRARY

The following were presented to the Library during the year :—

Donor

- BRITISH MUSEUM (NATURAL HISTORY), TRUSTEES OF Bulletin of the British Museum (Natural History).
Entomology. Vol. 4, nos. 1-6. 1955-56.
Geology. Vol. 2, nos. 7-8. 1955-56.
Vol. 3, no. 1. 1956.
Zoology. Vol. 3, nos. 5-10. 1955-56.
Vol. 4, no. 1. 1956.
The otiorrhynchine Curculionidae of the tribe Celeuthetini. By Sir Guy A. K. Marshall. 1956.
Scientific Reports. Great Barrier Reef Expedition 1928-29. Vol. 6, no. 5. 1956.
Fossil mammals of Africa. No. 9. 1956.
An illustrated catalogue of the Rothschild collection of fleas in the British Museum. Vol. 2. By G. H. E. Hopkins and Miriam Rothschild. 1956.
- CANSDALE, GEORGE S., B.A.,
B.Sc., F.L.S., F.Z.S. Die Wildkatzen der alten Welt. By T. H. Haltenorth. 1953.
- CARLSBERG FOUNDATION The Carlsberg Foundation. By Johannes Pedersen. 1956.
- CARRINGTON, RICHARD
T. M., F.Z.S. The story of our earth. By Richard Carrington. 1956.
De geschiedenis van de aarde. By Richard Carrington. 1956.
- COHEN, J. L. Adaptive coloration in animals. By Hugh B. Cott. 1940.
- CORNWALL, I. W., B.A.,
F.Z.S. Bones for the archaeologist. By I. W. Cornwall. 1956.
- DA COSTA LIMA, DR. A.,
C.M.Z.S. Insetos do Brazil. 10º tomo. Capítulo 29. Coleópteros. By A. Da Costa Lima. 1956.
- DANDELLOT, PIERRE Animaux de chasse d'Afrique. By Pierre Bourgoïn. 1955.
- DOUBLEDAY, G. R., F.Z.S. A guide to earth history. By Richard Carrington. 1956.
The London Zoo. By Philip Street. 1956.
- DUTFIELD, MISS D., F.Z.S. Chamber's encyclopaedia. New edition. Vols. 1-15 and suppl. 1950-54.
- ÉDITIONS HATIER-BOIVIN La forêt des souris volantes. By Gérald Durrell. Traduit de l'anglais par A. de Noblet. 1956.
- EXPÉDITIONS POLAIRES
FRANÇAISES Les Thecamoebiens de l'Ege. (Groenland). By L. Decloitre. 1956. (*Expéditions Polaires Françaises Missions Paul Emile Victor 8*).

- FIELD, HENRY, D.Sc., F.Z.S. Bibliography on Southwestern Asia : III. By Henry Field. 1956.
- HAQUE, MOHAMMED NURUL, B.Sc., F.Z.S. Mathsa-Kanya. By Mohammed Nurul Haque. [1955].
- HART-DAVIS, RUPERT . The drunken forest. By Gerald Durrell. 1956.
The Bafut beagles. By Gerald Durrell. 1954.
- HINDLE, E., M.A., Sc.D., Ph.D., F.R.S., F.Z.S. Marine borers. A preliminary bibliography. By William F. Clapp and Roman Kenk. 1956.
- HOARE, C. A., D.Sc., F.R.S., F.Z.S. Atlas bespozvonochnykh dal'nevostochnykh 1956. (Zool. Inst. Akad. Nauk S.S.S.R.).
- JEFFS, J. H., F.Z.S. . . . The practical management of fisheries. By Francis Francis. 1883.
The architecture of birds. The Library of Entertaining Knowledge. 1831.
Domestic habits of birds. The Library of Entertaining Knowledge. 1833.
The aquarium. Second edition. By Philip Henry Gosse. 1856.
- KALABUKHOV, N. I. . . . Metodika eksperimental'nykh issledovaniy po ekologii nazemnykh pozvonochnykh. By N. I. Kalabukhov. 1951.
Spyachka zhivotnykh. By N. I. Kalabukhov. 1956.
- KELHAM, MISS MOIRA . Dierenleven in Indonesië. By H. C. Delsman. 1951.
- MADRAS, CORPORATION OF Madras Zoo centenary celebrations 1855-1955. Souvenir 1955.
- MOHR, DR. ERNA . . . Ur, Hausrind und Mensch. By Hanns von Lengerken. 1955.
Ungarische Hirtenhunde. By Erna Mohr. 1956. (*Die Neue Brehm-Bucherei* Heft 176).
- MORIYAMA, DR. HIDEO . Immunity. By Hideo Moriyama. 1955.
The nature of viruses and the origin of life. By Hideo Moriyama. 1955.
- NATIONAL MUSEUM OF VICTORIA, TRUSTEES OF Collections of a century. By R. T. M. Pescott. 1954.
The mammals of Victoria. By C. W. Brazenor. 1950.
- ODHAMS PRESS . . . The London Zoo. By Philip Street. 1956.
- OXFORD UNIVERSITY PRESS The Odonata of Canada and Alaska. Vol. 1. Part 1 : General. Part 2 : The Zygoptera-Damselflies. By Edmund M. Walker. 1953.
North American moose. By Randolph L. Peterson. 1955.
- PAKISTAN, CENTRAL FISHERIES DEPARTMENT Marine fishes of Karachi and the coasts of Sind and Makran. (Government of Pakistan, Central Fisheries Department). 1955.
- PELLY, MRS. E. G., F.Z.S. . The sea and its wonders. By Mary Kirby and Elizabeth Kirby. 1871.

- The gardens and menagerie of the Zoological Society delineated; Vol. 1, Quadrupeds. 1830. Vol. 2, Birds. 1831.
- Interesting selections from animated nature with illustrative scenery. By William Daniell. [n.d.].
- PERRY, MISS FRANCES L.,**
F.Z.S. Snakes—mainly South African. By Walter Rose. 1955.
Salamanders and other wonders. By Willy Ley. 1955.
Snakes as pets. By Hobart M. Smith. 1953.
Rockall. By James Fisher. 1956.
No room for wild animals. By Bernhard Grzimek. 1956.
Zoo quest to Guiana. By David Attenborough. 1956.
Seeing America's wildlife in our national refuges. By Devereux Butcher. 1955.
Chasser sans tuer. Second edition. By Henri Ulrich. 1954.
- POTOUS, CAPT. PAUL L.,**
F.Z.S. No tears for the crocodile. By Paul L. Potous. 1956.
- PRATT, E. A. BRADFORD,**
F.Z.S. Hunting wild life with camera and flashlight. Vols. 1 and 2. Second edition. By George Shiras, 3d. 1936.
The book of the birds. Vols. 1 and 2. By Gilbert Grosvenor and Alexander Wetmore. [1937].
- PRESTWICH, A. A.,** F.Z.S. . Travels and traditions of waterfowl. By H. Albert Hochbaum. 1955.
Recent studies in avian biology. Edited by Albert Wolfson. 1955.
Prairie ducks. By Lyle K. Sowls. 1955.
Louis Agassiz Fuertes. His life briefly told and his correspondence edited by Mary Fuertes Boynton. 1956.
List of the birds of Surinam. By F. Haverschmidt. 1955.
The Sage Grouse in Wyoming. By Robert L. Patterson. 1952.
Bird life in Devon. By W. Walmesley White. 1931.
The end of the trail. By Willoughby P. Lowe. 1947.
A first guide to South African birds. By E. Leonard Gill. 1936.
Handbook of field and general ornithology. By Elliott Coues. 1890.
British birds: their successful management in captivity. Third edition. By J. Denham Bradburn. [1903].
A gossip on the wild birds of Norwood and Crystal Palace district. By W. Aldridge. 1885.

- Singing birds. Translated from the last German edition of Dr. Bechstein's "Chamber birds" by W. E. Shuckard, revised by G. J. Barnesby. 1892.
- A sketch of the natural history of Australia with some notes on sport. By Frederick G. Aflalo. 1896.
- Summer studies of birds and books. By W. Warde Fowler. 1895.
- Sorrows and joys of a New Zealand naturalist. By H. Guthrie-Smith. 1936.
- The natural history of South Africa. Vols. 1 and 2. Birds. By F. W. Fitzsimons. 1923.
- The birds of Sussex. By William Borrer. 1891.
- The literature of the Charadriiformes from 1894-1924. By George C. Low. 1924.
- A history of the birds of Suffolk. By Claud B. Ticehurst. 1932.
- British game. By Brian Vesey-Fitzgerald. 1946.
- Collections zoologiques du Baron Edmond de Selys Longchamps. Catalogue systématique et descriptif. Fasc. 31. Oiseaux, par J. Fraipont. 1910.
- The cowbirds. By Charles Bendire. 1895. (*Rep. U.S. Nat. Mus.* 1893, pp. 587-624).
- Birds of the Galapagos Archipelago. By Robert Ridgeway. (*Proc. U.S. Nat. Mus.* Vol. 19, pp. 459-670).
- A spring and summer in Lapland. Second edition. By "An Old Bushman". 1871.
- British birds for cages, aviaries, and exhibition. Vols. 1 and 2. By Sumner W. Birchley. 1909.
- Materialien zu einer Ornithologia Balcanica. Vol. 1. Bosnien und Herzegowina. By Reiser Othmar. 1939.
- Vogelbilder aus fernen Zonen-Papageien. Abbildungen und Beschreibungen. By Anton Reichenow. Second edition, prepared by Joachim Steinbacher and Hans von Boetticher. 1955.
- A hand-list of the birds of the Philippine Islands. By Richard C. McGregor and Dean C. Worcester. 1906.
- Studies on Great Crested Grebes. By K. E. L. Simmons. 1955. (Reprinted from *Avic. Mag.* Vol. 61).
- ROBERTS, MRS. CLIFTON** . Mammalia : A popular introduction to natural history. By Thomas Rymer Jones. [n.d.].
- SENCKENBERGISCHE NATUR-
FORSCHENDE GESELL-
SCHAFT** Stein, Kraut und Tier. By Georg Eberle. 1956.

- SNODGRASS, R. E., C.M.Z.S. Anatomy of the Honey Bee. By R. E. Snodgrass. 1956.
- STEINBERG, MISS HANNAH, B.A., Ph.D., F.Z.S. Animals and men. Studies in comparative psychology. By David Katz. A new translation by Hannah Steinberg and Arthur Summerfield. 1953.
- SUSCHITZKY, W., F.Z.S. Kingdom of the beasts. By Julian Huxley and W. Suschitzky. 1956.
- VEVERS, H. G., M.B.E., M.A., D.Phil., F.Z.S. The British seashore. By H. G. Vevers. 1954.
- YEALLAND, J. J., F.Z.S. Birds of Saurashtra, India. By R. S. Dharmakumarsinhji. 1955.

ZOOLOGICAL SOCIETY OF LONDON

MEETINGS DURING 1957

Scientific Meetings at 5 p.m.

Tuesday 12th February

„ 12th March

„ 9th April

„ 14th May

„ 18th June

„ 8th October

„ 12th November

„ 10th December

Ordinary General Meetings at 4.30 p.m.

Wednesday 16th January

„ 17th April

„ 17th July

„ 16th October

Annual General Meeting at 4 p.m.

Monday 29th April

Fellows of the Society are invited to attend the above Meetings held at the Offices in the Outer Circle of Regent's Park.



Photo: Fox Photos.

The Mandrill "Peppita" with her baby "George" born on the 19th December 1956.

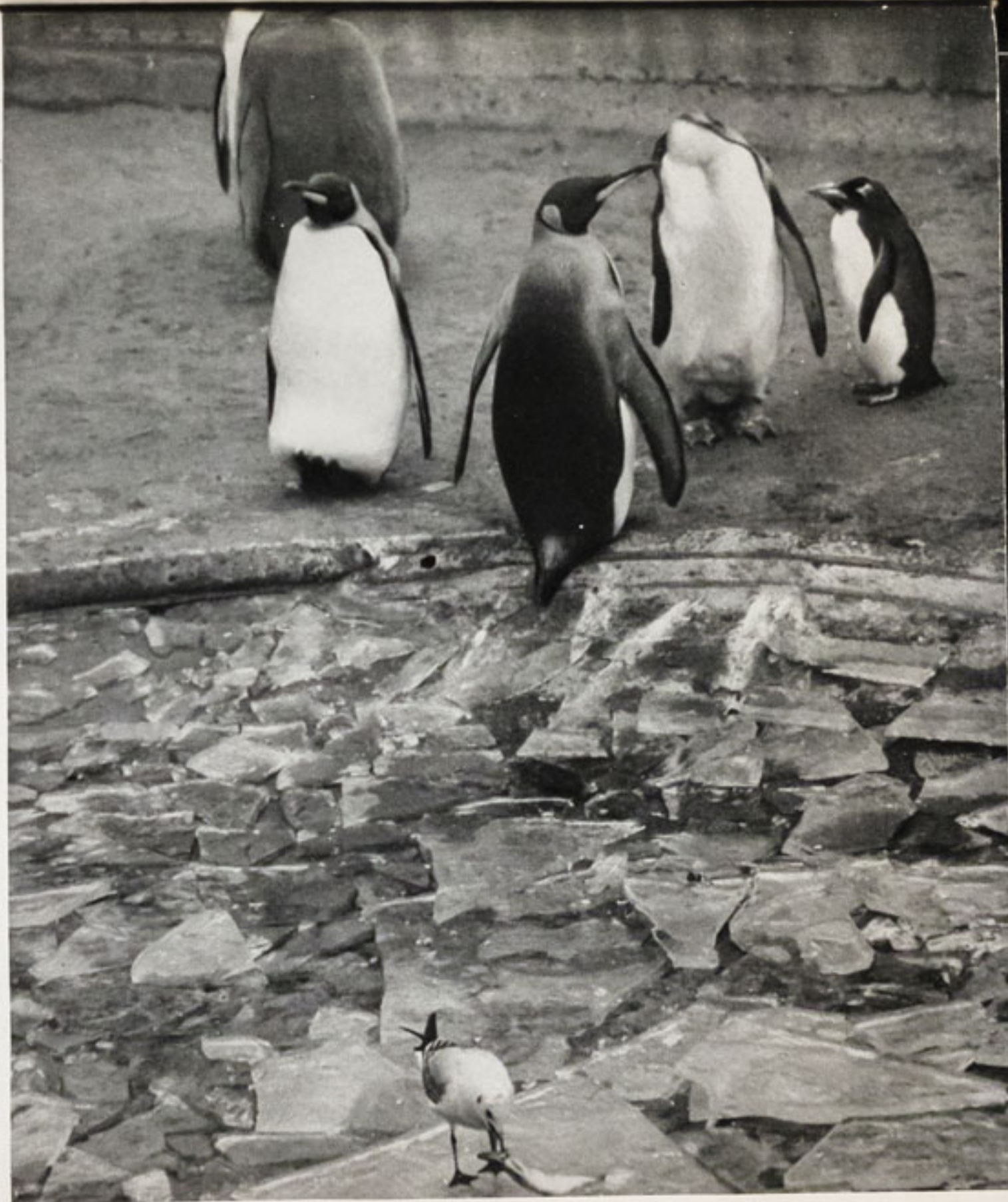


Photo: Fox Photos.

King Penguins and a Maccaroni Penguin on the edge of their frozen pool in November, 1956. A Black-headed Gull is in the foreground.



Photo: Fox Photos.

The Syrian Bear "Nikki" presented to H.R.H. Princess Anne by Mr. N. A. Bulganin, Chairman of the Council of Ministers of the U.S.S.R., and Mr. N. S. Krushchev, Member of the Praesidium of the Supreme Soviet of the U.S.S.R., and deposited in the Gardens by H.M. The Queen.



Photo: W. Suschitzky.

A male Saiga Antelope, father of the calf born on the 21st July, 1956.

REPORT OF THE AUDITORS OF THE ACCOUNTS

OF THE

ZOOLOGICAL SOCIETY

OF LONDON

To the Council and Fellows,
The Zoological Society of London,
Regent's Park, N.W.1.

In accordance with Chapter V of the Bye-laws, we hereby certify that we have audited the Accounts of the Society for the year ended 31st December, 1956, as shown by our certificate attached to the accompanying Accounts. We report to the Society that at that date the total Assets included in the Balance Sheet amounted to £1,202,324, and the Liabilities, Pensions Fund and Depreciation of Investments Reserve Fund to £468,199, showing a surplus of Assets over Liabilities amounting to £734,125, subject to the estimated values of some of the Assets.

(Signed) W. B. KEEN & Co.,
Chartered Accountants.

Finsbury Circus House,
Blomfield Street,
London, E.C.2.
21st February, 1957.

Comp. Figures 1955.	LIABILITIES AND SURPLUS.		
£	£	£	£
	Sundry Creditors—		
19,642	Provisions, Materials and General Expenses		27,561
	Reserves and Suspense Account—		
976	Receipts in Advance (Subscriptions, etc.)		692
	Pensions Fund—		
309,625	Balance at 1st January, 1956	309,625	
	Depreciation of Investments Reserve Fund—		
	Balance at 1st January, 1956	165,000	
	Deduct Loss on Sale of Investments	34,679	
165,000		130,321	
			439,946
£495,243			468,199
	Balance being Excess of Assets over Liabilities—		
	Heer Bequest—		
91	Balance at 1st January, 1956		91
	Composition Fund—		
	Balance at 1st January, 1956	20,837	
	Add Fees received during year	538	
		21,375	
	Deduct Transfer to General Reserve Fund—Regent's Park—Fees of deceased Compounders (see page 54)	730	
20,837		20,645	
	Rebuilding Fund—		
	Balance at 1st January, 1956	48,268	
	Add		
	Interest on Investments	331	
	Donations	35	
	Seven year Covenants and Adoption Scheme Donations	1,219	
	Transfer from Income and Expenditure Account (see page 61)	35,000	
		84,853	
	Deduct Transfer to Income and Expenditure Account (see page 59)	36,280	
48,268		48,573	
	Catering Departments Equipment and Repairs Stabilisation Fund—		
	Balance at 1st January, 1956	11,905	
	Add Interest on Investments	308	
11,905		12,213	
£576,344	Carried forward	£81,522	£468,199

Comp. Figures 1955.	ASSETS.		
£	£	£	£
	Freehold Property—		
	Whipsnade Park—		
	Cost of Land and Buildings, Enclosures, etc., including Redemption of Land Tax and Tithes at 1st Jan., 1956		
		105,722	
	Add Expenditure on New Staff Cottages	268	
	Purchase of Whipsnade Green (Balance)	735	
		1,003	
	Deduct Sale of Land	55	948
			106,670
120,196	Regent's Park—31, Prince Albert Road	14,474	121,144
	Plant, Vehicles, Fittings and Furniture—		
	At Regent's Park and Whipsnade Park and in Catering Departments (not valued)		
	Stock Accounts—		
*148,672	Animals belonging to the Society		*154,129
*100,000	Books in Library		*100,000
*1,000	Scientific Publications		* 1,000
	Guides, Maps, Films, Books, and Souvenirs, etc. (at or under cost)		8,866
7,868	Farm and Garden: Crops, Implements, etc. (Whipsnade)		*5,168
*5,252	Catering Departments—Provisions, etc. (at cost)		14,877
15,359			284,040
	Sundry Debtors—		
4,691	Miscellaneous Accounts since received or considered good		10,456
	Suspense Accounts—		
2,547	Rates, Insurances, etc., paid in advance		1,678
	Investments (at cost)—Pensions Fund—		
	£95,621 8s. 8d. 3 per cent. British Transport Gtd. Stock 1978-88		
		90,805	
	£97,000 0s. 0d. 3 per cent. British Gas Gtd. Stock 1990-95		
		90,056	
	£20,851 10s. 11d. 3 per cent. British Transport Gtd. Stock 1967-72		
		19,000	
	500 Common Shares, Power Corpn. of Canada		
		13,010	
	£42,271 9s. 5d. 2½ per cent. Savings Bonds 1964-67		
		39,715	
	£6,000 0s. 0d. Consolidated Co. Bultfontein Mine Ltd. Ordinary Shares £1 each fully paid		
		9,510	
	500 Chase Manhattan Bank shares of Capital Stock		
		9,562	
	300 El Paso Natural Gas Co. \$3 Common Shares		
		6,751	
	\$15,000 Sinclair Oil Corporation 4½ per cent. Convertible Subordinated Debentures, 1986		
		6,516	
	2,200 Tri-Continental Corporation Shares of Common Stock		
		23,823	
303,887			308,748
	Heer Bequest—		
91	£96 1s. 4d. 2½ per cent. Savings Bonds 1964-67		91
	Composition Fund—		
	£5,022 12s. 1d. 3 per cent. British Transport Gtd. Stock 1978-88		
		4,770	
	£15,976 15s. 8d. 2½ per cent. Savings Bonds 1964-67		
		15,295	
20,795			20,065
£730,358	Carried forward	£328,904	£417,318

* As per valuations by Society's Officials.

Comp.
Figures
1955.

LIABILITIES AND SURPLUS.

£	£	£
576,344	Brought forward...	81,522 468,199
Balance being Excess of Assets over Liabilities—continued—		
Staff Compensation and Sick Benefit Fund—		
	Balance at 1st January, 1956...	1,082
	Add Interest on Investments ...	19
	Transfer from Income and Expenditure Account (see page 61) ...	100
1,082		1,201
Allen Bequest—		
	Regent's Park—Balance at 1st January, 1956 ...	15,252
	Add Interest on Investments ...	306
15,252		15,558
Hance Bequest—		
	Balance at 1st January, 1956 ...	12,654
	Add Interest on Investments ...	315
12,654		12,969
Salisbury Bequest—		
	Balance at 1st January, 1956 ...	2,872
	Add Interest on Investments ...	68
2,872		2,940
Kime Bequest—		
	Regent's Park—	£
	Balance at 1st January, 1956 ...	602
	Add Interest on Investments ...	15
602		617
Whipsnade Park—		
	Balance at 1st January, 1956 ...	361
	Add Interest on Investments ...	9
361		370
		987
15,848	Zoological Record Fund (see page 63) ...	16,673
5,439	Neave-Lloyd Nomenclator Zoologicus Fund (see page 63) ...	6,225
Birtwistle Donation Fund—		
	Balance at 1st January, 1956...	300
	Deduct Expenditure during year ...	300
300		—
Barrington Bequest—		
	Legacy from the Late Mr. F. J. F. Barrington ...	1,000
	Add Interest on Investments ...	4
—		1,004
£630,754	Carried forward ...	£139,079 £468,199

Comp.
Figures.
1955.

ASSETS.

£	£	£
730,358	Brought forward ...	328,904 417,318
Investments (at cost)—continued—		
Catering Departments—Equipment and Repairs Stabilisation Fund—		
	£11,834 18s. 10d. 2½ per cent. Savings Bonds 1964-67	11,126
	£346 4s. 2d. 3 per cent. British Transport Gtd. Stock 1978-88 ...	329
11,455		11,455
Staff Compensation and Sick Benefit Fund—		
	£427 9s. 3d. 3 per cent. British Transport Gtd. Stock 1978-88 ...	406
	£264 4s. 6d. 2½ per cent. Savings Bonds 1964-67 ...	250
656		656
Hance Bequest—		
	£12,601 12s. 10d. 2½ per cent. Savings Bonds 1964-67	12,264
12,264		12,264
Salisbury Bequest—		
	£2,722 7s. 7d. 2½ per cent. Savings Bonds 1964-67 ...	2,657
2,657		2,657
Kime Bequest—		
	£925 0s. 8d. 2½ per cent. Savings Bonds 1964-67 ...	875
875		875
Zoological Record Fund—		
	£6,759 0s. 6d. 2½ per cent. Savings Bonds 1964-67 ...	6,623
	\$15,000 Burroughs Corporation 4½ per cent. Con- vertible Subordinated Debentures 1981 ...	6,690
6,623		13,313
Neave-Lloyd Nomenclator Zoologicus Fund—		
	£5,496 19s. 9d. 2½ per cent. Savings Bonds 1964-67	5,211
5,211		5,211
Depreciation of Investments Reserve Fund—		
	£113,538 12s. 1d. Consolidated 2½ per cent. Stock...	112,674
	£18,582 5s. 10d. British Transport 3 per cent. Gtd. Stock 1978-88 ...	17,647
165,000		130,321
Barrington Bequest—		
	£1,051 8s. 11d. 2½ per cent. Savings Bonds 1964-67 ...	1,000
—		1,000
Rebuilding Fund—		
	£14,300 0s. 0d. 3 per cent. Savings Bonds 1960-70...	13,778
12,529		13,778
Allen Bequest (Regent's Park)—		
	600 \$10 shares Royal Bank of Canada ...	14,890
15,047		14,890
General Reserve Fund—Regent's Park—		
	£30,000 United Dominions Trust Ltd. Deposit a/c ...	30,000
	£260 0s. 0d. Prudential Assurance Co., Ltd., 260 "A" Shares of £1 each ...	8,911
	£425 0s. 0d. Union Corporation Ltd., 3,400 Ordinary Shares of 2s. 6d. each ...	8,912
	500 "B" Shares MacMillan and Bloedel Ltd. ...	8,327
	400 Common Shares Steel Co. of Canada ...	10,529
	400 English and Dutch Investment Trust Ltd., Participation Certificates ...	1,370
	300 Common Shares, Westcoast Transmission Co., Ltd. ...	3,488
	500 Common Shares A.M.P. Incorporated ...	3,349
	150 Shares of Common Stock Youngstown Sheet and Tube Co. ...	7,329
61,949		82,215
General Reserve Fund—Whipsnade Park—		
	600 Common Shares, British American Oil Co. ...	10,816
	200 Common Shares, Shell Oil Company ...	7,314
14,326		18,130
£1,038,950	Carried forward ...	£635,669 £417,318

Comp. Figures 1955.		LIABILITIES AND SURPLUS.		
£		£	£	£
630,754	Brought forward	...	139,079	468,199
Balance being Excess of Assets over Liabilities—continued—				
General Reserve Fund—Regent's Park—				
	Balance at 1st January, 1956	...	73,865	
	Add Interest on Investments	...	6,661	
	Profit on Redemption of National War Bonds	...	433	
	Refund of Sch. "A" Tax	...	1,662	
	Transfer of Fees of deceased Compounders (see page 50)	...	730	
73,865			83,351	
General Reserve Fund—Whipsnade Park—				
	Balance at 1st January, 1956	...	23,818	
	Add Interest on Investments	...	333	
	Refund of Sch. "A" Tax	...	809	
			24,960	
	Deduct Expenditure on New Staff Cottages (see below)	...	268	
	Purchase of Whipsnade Green (Balance) (see below)	...	735	
			1,003	
	Transfer to Income and Expenditure Account (see page 61)	...	2,318	
23,818			3,321	
			21,639	
			244,069	
General Purposes Account—				
	Balance at 1st January, 1956	...	476,387	
	Add Increase in value of Animals	...	5,457	
	Transfer from General Reserve Fund (see above)	...	1,003	
	Surplus from Income and Expenditure Account (see page 61)	...	7,209	
476,387			490,056	
			734,125	
<u>£1,204,824</u>			<u>£1,202,324</u>	

Comp. Figures 1955.		ASSETS.		
£		£	£	£
1,038,950	Brought forward	...	635,669	417,318
General Purposes Account—				
	Loan on Mortgage—			
600	Balance at 1st January, 1956	...	600	
			636,269	
Cash at Bank and in Office—				
Deposit and Current Accounts—				
79,500	General Accounts	...	90,131	
11,320	Catering Departments	...	10,260	
450	do. Equipment and Repairs Stabilisation Fund	...	758	
42	Composition Fund	...	580	
11,916	General Reserve Fund—Regent's Park	...	1,136	
9,492	do. Whipsnade Park	...	3,509	
5,738	Pensions Fund	...	877	
88	Kime Bequest	...	112	
9,225	Zoological Record Fund	...	3,360	
228	Neave-Lloyd Nomenclator Zoologicus Fund	...	1,014	
426	Staff Compensation and Sick Benefit Fund	...	545	
215	Salisbury Bequest	...	283	
300	Birtwistle Donation Fund	...	—	
35,739	Rebuilding Fund	...	34,795	
390	Hance Bequest	...	705	
205	Allen Bequest	...	668	
	Barrington Bequest	...	4	
			*148,737	

* £104,157 on Deposit Account.

The Market Value of the Securities held on 31st December, 1956, was £460,488 showing a Depreciation of £145,181 on original cost.

£1,202,324

Comp. Figures 1955.	INCOME.						£	£
£	REGENT'S PARK						£	£
FELLOWS.								
3,006	Entrance Fees	2,988	
20,985	Subscriptions	21,176	
4,245	Fellows Tickets—Sale of	4,570	
								28,734
GARDENS.								
188,047	Admission of Visitors to Gardens	212,026	
13,098	do. do. to Aquarium	12,331	
9,653	do. do. to Children's Zoo	8,118	
802	Film and Broadcasting Permits, etc.	521	
—	Television Unit (Granada Television Ltd.)	3,500	
1,129	Chimpanzees' Tea Party	733	
2,162	Lavatories	2,146	
4,973	Riding Receipts	4,334	
2,742	Bath and Push Chairs, Hire of	2,377	
435	Animals, etc., Sale of	1,238	
8,921	Books, Souvenirs, etc., Sale of	8,871	
4,159	Maps, Sale of	3,804	
5,704	Guides—Sale of	5,600	
838	Photography—Children's Zoo	361	
77	Miscellaneous Receipts	43	
								266,003
SCIENTIFIC.								
138	Library Photographs, Copyright Fees	119	
188	Prosectorium Specimens, Sale of	344	
3,112	Scientific Publications— Subscriptions and Sales	4,839	
Zoo Life Magazine—								£
33	Sales in the Gardens	39	
118	Share of Sales by Publishers, Vol. 10	35	
	(Society's share of Sales by the publishers for Vol. 11 not yet ascertained.)	74	
								5,376
INTEREST.								
4,350	Investments and Bank Deposit	4,970	
3,023	de Arroyave Trust Fund (see page 63)	3,086	
57	Davis Trust Fund (see page 63)	57	
								8,113
£281,995	Carried forward	£308,226	

Comp. Figures 1955.	EXPENDITURE.						£	£
£	REGENT'S PARK.						£	£
GARDENS.								
6,048	Rent, Rates, Taxes and Insurance	7,000	
81,189	Salaries—Menagerie Staff and Keepers	86,614	
11,092	Animals, Cost and Carriage of	6,195	
20,604	Provisions	21,458	
27,833	Fuel, Light, Water, Cleaning, Utensils, Transport and Other Expenses	30,461	
34,363	Works Department—Repairs, Maintenance, Alterations and Improvements (excluding Aquarium, Children's Zoo and Catering Department)	32,187	
12,378	Gardeners' Expenses— Salaries, Wages, Seeds, Plants, Implements, etc.	13,830	
10,033	Aquarium— Salaries, Wages, Exhibits, Provisions, Fuel, Light, General Maintenance, etc.	11,896	
3,608	Advertising	2,687	
6,033	Books, Souvenirs, etc., Cost of	6,142	
1,361	Maps, Cost of	1,338	
2,504	Guides, Cost of	2,689	
250	Leasehold Property (Quarantine Station), Amount written off Children's Zoo—	—	
6,805	Wages, Provisions, Exhibits, General Maintenance, etc.	7,407	
								£229,904
£224,101								
SCIENTIFIC.								
2,646	Salaries and Sundry Expenses	3,945	
5,606	Library— Salaries, Wages, Books and Binding, etc.	6,836	
4,641	Prosectorium Expenses— Salaries, Wages, Chemicals, Apparatus, etc.	4,501	
5,284	Scientific Publications, Cost of	6,104	
Zoo Life Magazine—								£
	Contributors' Fees, etc.	328	
	Cost of copies for Sales in the Gardens	26	
368								354
Grants—								
250	Zoological Record Fund (see page 62)	250	
178	Other Grants	242	
	Fauna Preservation Society	£250		
	Less Rent for use of Offices	250	—	492
								22,232
£243,074	Carried forward	£252,136	

Comp. Figures 1955.	INCOME.				£	£
£	REGENT'S PARK.				£	£
281,995	Brought forward	308,226
CATERING DEPARTMENT, REGENT'S PARK.						
	12,590	Profit for the year	14,711
	2,500	Rent of Department	2,500
15,090						17,211
<u>£297,085</u>	Total Income, Regent's Park (see page 60)					<u>£325,437</u>

£	WHIPSNAD PARK.				£	£	£
GARDENS.							
60,710	Admission of Visitors to Park	65,527		
—	do. do. Children's Zoo	3,999		
10,523	do. Cars to Park	11,057		
						80,583	
	Car Park—						
4,534	Parking Fees	4,346		
3,755	Train Receipts	2,621		
120	Film and Broadcasting Permits, etc.	249		
3,159	Riding Receipts	2,814		
694	Bath and Push Chairs, Hire of	546		
2,796	Animals, etc., Sale of	3,062		
	Farm—						
6,524	Sale of Produce, etc.	7,576		
219	Garden and Forestry	108		
7,798	Books, Souvenirs, etc., Sale of	8,181		
1,958	Maps, Sale of	1,735		
312	Miscellaneous Receipts	186		
91	Zoo Life Magazine—Sales	62		
						112,069	
<u>£103,193</u>	Carried forward						<u>£112,069</u>

Comp. Figures 1955.	EXPENDITURE.				£	£
£	REGENT'S PARK.				£	£
243,074	Brought forward	252,136
ADMINISTRATION.						
21,181	Salaries, Wages, Fuel, Light, Stationery and Printing, Tele-phones, Postages, etc.	22,804
NEW BUILDINGS, ETC.						
	£	Construction and Equipment of Hospital and Sanatorium	27,802
	24,398	Meeting Room alterations and Construction of Basement	8,478
						<u>36,280</u>
	24,398	Less Transfer from Rebuilding Fund (see page 50)	36,280
						<u>—</u>
	3,979	Construction of Pony Stables	2,604
	—	Aquarium Roof Reconstruction	3,943
3,979						6,547
<u>£268,234</u>	Total Expenditure, Regent's Park (see page 61)					<u>£281,487</u>

£	WHIPSNAD PARK.				£	
GARDENS.						
2,459	Rates, Taxes and Insurance	2,417	
27,184	Salaries, Menagerie Staff, Keepers, etc.	32,427	
1,597	Animals, Cost and Carriage of	3,270	
13,066	Provisions	14,917	
	Fuel, Light, Water, Cleaning, Utensils, Transport and Other Expenses	7,742	
6,651	Works Department—Repairs, Maintenance, Alterations and Improvements (excluding Farm and Catering Department)	22,989	
19,719	Advertising	1,105	
1,083	Farm	6,896	
6,439	Garden, Forestry and Care of Paddocks	3,285	
3,927	Books, Souvenirs, etc., Cost of	4,994	
4,758	Maps, Cost of	505	
508	Zoo Life Magazine—Cost of copies for sale	43	
60						
<u>£87,451</u>	Carried forward					<u>£100,590</u>

FOR THE YEAR ENDED 31ST DECEMBER, 1956.

Comp. Figures 1955.	INCOME.				£	£
£	WHIPSNAD PARK.				£	£
103,193	Brought forward...	112,069	
CATERING DEPARTMENT, WHIPSNAD PARK—						
	£6,062	Profit for the Year	1,836	
	900	Rent of Department	900	
6,962					2,736	
<hr/>						
110,155	Total Income, Whipsnade Park	114,805	
297,085	Total Income, Regent's Park (see page 58)	325,437	
<hr/>						
407,240					440,242	
<hr/>						
PENSIONS.						
* —	Interest on Pension Fund Investments...	10,173	
	* (1955—Interest £9,588 Credited to Fund).					
<hr/>						
407,240					450,415	
<hr/>						
30,893	Balance brought down	42,309	
<hr/>						
£30,893					£42,309	

Comp. Figures 1955.	EXPENDITURE.				£	£
£	WHIPSNAD PARK.				£	£
87,451	Brought forward	100,590	
ADMINISTRATION.						
4,269	Salaries, Fuel, Light, Wages, Stationery, Printing, Tele- phones, Postages, etc.	4,822	
NEW BUILDINGS, ETC.						
	£4,602	Construction of Children's Zoo	2,318	
	4,602	Deduct Transfer from General Reserve Fund— Whipsnade Park (see page 54)...	2,318	
<hr/>						
91,720	Total Expenditure, Whipsnade Park	105,412	
268,234	Total Expenditure, Regent's Park (see page 59)	281,487	
<hr/>						
359,954					386,899	
<hr/>						
PENSIONS.						
Paid during year:—						
	£12,849	Regent's Park—General	17,370	
	1,666	Whipsnade Park—General	1,899	
	1,878	Catering Departments	1,938	
16,393					21,207	
<hr/>						
376,347					408,106	
30,893	Balance carried down	42,309	
<hr/>						
407,240					450,415	
<hr/>						
APPROPRIATIONS.						
100	Transfer to Staff Compensation and Sick Benefit Fund (see page 52)	100	
12,000	Transfer to Rebuilding Fund (see page 50)	35,000	
7,000	Transfer to General Reserve Fund—Whipsnade Park	—	
5,000	Transfer to General Reserve Fund—Regent's Park	—	
<hr/>						
24,100					35,100	
<hr/>						
BALANCE.						
6,793	Surplus for the year after making appropriations to Funds to meet future liabilities, carried to Balance Sheet (see page 54)				7,209	
<hr/>						
£30,893					£42,309	

INCOME.

Comp.
Figures
1955.

£		£
3,099	Interest on Investment (per Official Trustees of Charitable Funds) ...	3,099

£3,099£3,099

DE ARROYAVE

Trustees—The Official Trustees
of Charitable Funds.
£103,305 7s. 9d.—3 per cent.

£		£
3,099	Interest on Investment (per Official Trustees of Charitable Funds) ...	3,099

£3,099£3,099

DAVIS

£1,891 9s. 0d.—3 per cent. British

£		£
57	Interest on Investment ...	57

£57£57

ZOOLOGICAL

£		£
12,508	Balance at 1st January, 1956 ...	15,848
2,784	Donations received during year (including transfer from Income and Expenditure Account—see page 57) ...	2,030
4,918	Subscriptions and Sales ...	5,099
1,203	Royalties on Reprints ...	134
169	Interest on Investments ...	169

£21,582£23,280

NEAVE-LLOYD NOMENCLATOR

£		£
4,901	Balance at 1st January, 1956 ...	5,439
423	Subscriptions and Sales ...	667
121	Interest on Investments ...	137

£5,445£6,243

We hereby certify that we have examined the Books and Accounts of the Society Having received all the information and explanations we have required, we report that the Accounts show a true and fair view of the position as shown by the books of the

Finsbury Circus House,
Blomfield Street,
London, E.C.2.
21st February, 1957.

EXPENDITURE.

Comp.
Figures
1955.

TRUST FUND.

of Charitable Funds.
Funding Stock, 1959-69.

£		£	£
76	Expenses re Upkeep of the de Arroyave Grave at Highgate and Mausoleum at Westbury ...	8	
3,023	Tax on Income expended on Upkeep of de Arroyave Grave at Highgate and Mausoleum at Westbury ...	5	
	Balance of Income transferred to Income and Expenditure Account (see page 56) ...		13

£3,099£3,086

TRUST FUND.

Transport Guaranteed Stock 1978-88.

£		£
57	Transfer to Income and Expenditure Account (see page 56)...	57

£57£57

RECORD FUND.

£		£
5,734	Preparation and Printing, etc. ...	6,607
15,848	Balance at 31st December, 1956 (see page 52)...	16,673

Note.—Publication of Vols. 91-92 delayed.

£21,582£23,280

ZOOLOGICUS FUND.

£		£
6	Distribution Expenses, etc. ...	18
5,439	Balance at 31st December, 1956 (see page 52)...	6,225

£5,445£6,243

TERENCE C. S. MORRISON-SCOTT,
Hon. Treasurer.

for the year ended 31st December, 1956, and have found them to be in order. that in our opinion the above Balance Sheet and accompanying Income and Expenditure Accounts show a true and fair view of the position as shown by the books of the Society. We have verified the Investments and the Cash Balances.

W. B. KEEN & CO.,
Chartered Accountants.

ZOOLOGICAL SOCIETY
OF LONDON



REPORT OF THE COUNCIL AND
AUDITORS FOR 1957

Prepared for the Annual General Meeting, at 4 p.m.
on Tuesday 29 April 1958

