

REPORTS

OF THE

COUNCIL AND AUDITORS

OF THE

ZOOLOGICAL SOCIETY

OF LONDON

FOR THE YEAR 1937

PREPARED FOR THE ANNUAL GENERAL MEETING

TO BE HELD ON

FRIDAY, APRIL 29th, 1938

AT 4 P.M.

PRINTED BY
RICHARD CLAY & SONS, LTD
BUNGAY, SUFFOLK.

1938

1938.

MEETINGS FOR SCIENTIFIC BUSINESS,

At Half-past Five o'clock p.m. (5.30 p.m.)

TUESDAY, February	1 & 15
„ March	1 & 14
„ April	5 & 26
„ May	10 & 24
„ June	15
„ October	18
„ November	1 & 15

MEETINGS FOR GENERAL BUSINESS,

At Half-past Four o'clock p.m. (4.30 p.m.)

WEDNESDAY, January	19
„ February	16
„ March	16
„ April	20

FRIDAY, April 29th, at 4 p.m. (ANNIVERSARY MEETING).
(Annual Report and Election of Council and Officers.)

WEDNESDAY, May	18
„ June	15
„ July	20
„ August	17
„ November	16
„ December	21

Fellows of the Society are invited to attend the above Meetings held at the Offices in the Zoological Gardens.

LIST OF CONTENTS OF THE REPORT OF THE COUNCIL.

A. ANNUAL GENERAL MEETING.	PAGE
Date	7
Procedure at the Annual General Meeting	7
B. GENERAL REPORT FOR THE YEAR.	
Visitors	8
Professional Fellows	8
Zoological and Veterinary Students	8
Coronation Dinner, Entertainment, &c.	9
H.M. Queen Mary	10
Award of Silver Medal	10
Changes in Staff	10
Bequests	10
Gift of Portraits of Presidents	11
By-laws, Revision of	11
Notable Specimens and Exhibits	11
New Works, 1937	13
Children's Zoo	15
Photographic Department	15
Scientific and Technical Card Index	16
Open Evenings	16
Catering Departments	16
Education	17
Scientific Research	17
Scientific Publications and Meetings	18
Special Entertainment, &c.	19
Zoo Magazine	19
Aquarium Admission	19
Zoological Films	19
Exhibition of Animal Art	20
Midsummer Eve Entertainment, Whipsnade	20
Zoological Sports and Social Club	21
Broadcasting and Lecturing	21
C. FELLOWS AND MEMBERS.	
Roll of Fellows	21
Imperial Fellows	22
Foreign Members	22
Corresponding Members	22
List of Fellows and Members	22

D. SCIENCE AND ANIMAL CONSERVATION.						PAGE
Scientific Meetings	23
Scientific Publications	23
Thanks to Publication Committee	23
Zoological Record	23
Zoological Record : Finance and Reserve Fund	23
Nomenclator Zoologicus	24
Library	25
Prosectorium	28
Pathology	28
Anatomical Research Fellowship	29
Other Scientific Research in the Gardens	29
Helminthology	29
Ophthalmology	30
Scientific and other Grants	30
Loan of the Society's Rooms	30
Animal Protection	30
Chillingham Cattle	31
Animals and Films	32
E. REGENT'S PARK GARDENS.						
(I) VISITORS, &c.						
Number of Visitors	32
Aquarium Visitors	33
Open Evenings	33
Band	34
Medical Attendance at the Gardens	34
Guides and Picture Postcards	34
(II) CATERING.						
Refreshment Department	35
Refreshment Department : Accounts	35
(III) GARDENS, REGENT'S PARK.						
Staff	35
Gardening Department	36
Electrical Department	36
Works Department	36
Works during 1937	36
Extraordinary Works, 1937	37

(IV) MENAGERIE.

	PAGE
Commissariat	38
Numbers in the Collection	40
Mammals and Birds Bred in the London Gardens, 1937	40
List of Species New to the Collection in 1937 ...	43
Acknowledgments	47
List of Donors to London Gardens	47
List of Animals Deposited during 1937	55
List of Animals Received in Exchange, 1937 ...	56
List of Animals Purchased, 1937	57
Insects	59
Aquarium	59

F. WHIPSNADDE ZOOLOGICAL PARK.

(I) VISITORS.

Number of Visitors	60
Bedfordshire County Police	60
First Aid and Medical Attendance	60
Guide	60
Postcards	60
Eastern National Omnibus Service	60
Meteorology	60

(II) CATERING.

Accommodation	61
Assistant Manager	61
Accounts	61

(III) PARK.

General Report	61
Agriculture and Gardening	62
Engineer's Section	63
Works	63
Staff	63
Numbers in the Collection	64
Bred at Whipnade, 1937	64
List of Donors to Whipnade Park	65
List of Animals Purchased, 1937	66
List of Animals Deposited, 1937	66

G. FINANCE.

Income and Expenditure	66
Assets, 1936 and 1937	67
Liabilities, 1936 and 1937	67
Pensions Fund	67
Balance, 1936 and 1937	67
De Arroyave Fund	67
Legacies to the Society	67

REPORT OF THE COUNCIL.

for the year ended 31st December, 1937.

A. ANNUAL GENERAL MEETING.

1. The Council has pleasure in presenting the one hundred and ninth Annual Report to the General Meeting of the Society, to be held on Friday, April 29th, 1938, at 4 p.m., at the Offices of the Society, in the Gardens, Regent's Park, N.W.8.

2. PROCEDURE AT THE ANNUAL GENERAL MEETING.

(By-law, Chapter VIII, Sections I and II.)

SECT. I. Notice of the time and place of the Annual General Meeting shall be advertised by the Council in four or more of the public Newspapers, at least fourteen days before the same shall take place.

SECT. II. The course of proceeding at the Annual General Meeting, after the Chair has been taken, shall be as follows :—

1. The reading of the Minutes of the previous Annual Meeting.
2. The appointment of Scrutineers and opening of the Ballot.
3. Presentation of the Auditors' Report, previously issued to Fellows.
4. Discussion of the Auditors' Report.
5. Presentation of the Council's Annual Report, previously issued to Fellows.
6. Discussion of the Council's Annual Report.
7. To receive the Report of the Scrutineers on the result of the Ballot.

No other business shall be transacted at such Meeting.

B. GENERAL REPORT FOR THE YEAR.

3. VISITORS.—Contrary to expectations, the attendance of visitors during Coronation Year (1,946,897) was slightly less than that for either of the two previous years. The decrease, however, was well under 1% of the total. (For comparative tables, see p. 32.)

At Whipsnade, however, there was a record attendance of 546,418, the numbers increasing by almost 13%, as against an increase of under 3% for the previous year.

It is worth noting that the combined figures for Whipsnade and Regent's Park constitute a record for total number of visitors, although the record for Regent's Park (2,225,662 in 1928) was not surpassed by the combined figures for London and Whipsnade until 1935.

The combined totals for the last five years are as follows:—

1933	1,991,220
1934	2,156,022
1935	2,433,681
1936	2,446,575
1937	2,493,315

4. PROFESSIONAL FELLOWSHIP.—An important change was made in the provisions for the admission of professional zoologists to the Fellowship. In place of the previous arrangement by which professional zoologists occupying junior posts were eligible for Associate Fellowship, the by-laws have been altered to permit any professional zoologist, subject to special conditions, to be elected as a full Fellow, but with reduced privileges as regards admission and tickets, on payment of an admission fee of £1 and annual subscription of £1. Such professional Fellows can after three years become Fellows with ordinary privileges by paying the full normal subscription.

5. ZOOLOGICAL AND VETERINARY STUDENTS.—New regulations were also promulgated for the benefit of bona fide Students of University standing in Zoology and Veterinary Science. These can now enjoy the privilege, previously accorded to recognized Art Students, of obtaining a season ticket of admission for the year at the price of 5/-, on the written recommendation of the Head of their Department.

6. CORONATION. *Dinner and Entertainment.*—To celebrate the coronation of H.M. King George VI, and to play its part in the entertainment of the visitors from all parts of the Empire, the Society arranged a Coronation Dinner and Entertainment on May 28th, 1937. Among the distinguished guests of the Society were H.H. the Maharao of Kutch, H.H. the Maharajah Gaekwar of Baroda, H.H. the Sultan of Johore, H.H. the Sultan of Trengganu, H.H. the Maharaja of Tehri Garhwal, H.H. Abdul Rahman, the Prime Minister of Australia (Mr. Lyons), the Prime Minister of Southern Rhodesia (Mr. Huggins), H.E. the Belgian Ambassador, Earl de la Warr, the Bishop of London, Lord Trenchard, Lord Salvesen, the Alake of Abeokuta, the Paramount Chief of Barotse-land, Sheik Omar Fye, and many others, totalling 224 in all. Numerous Fellows of the Society also attended. The Earl of Onslow, President of the Society, was in the Chair, with Major Pam, Treasurer of the Society, deputizing for him in the lower room. In response to the toast of the Guests, proposed by the President, there spoke H.H. the Maharao of Kutch (for India), and Mr. Lyons (for the Dominions). Mr. Lyons also proposed the toast of the Zoological Society, to which Lord Moyne responded.

After dinner, an entertainment was provided for the guests. The gardens were floodlit, there was a marquee for dancing, a special demonstration of television of Zoo animals, and an exhibition of films of zoological interest.

Special Admission Facilities.—In view of the large numbers of visitors from overseas and the provinces expected in London in connection with the Coronation, who might be disappointed through ignorance of the Society's regulations concerning Sunday admission, special arrangements were made by Council as follows :—

A limited number of tickets for the use of distinguished Visitors was placed at the disposal of each of the five Dominions, Southern Rhodesia, Newfoundland, India and the Crown Colonies.

Ten vouchers were sent to each Fellow with the annual supply of tickets. These, when presented at the office, signed by the Fellow, entitled the holder to admission upon payment of 2s. 6d. on any Sunday from May 1st to July 31st. Fellows were also able to purchase up to ten additional tickets at a cost of 2s. 6d. each, entitling the holder to admission between the same dates.

Finally, visitors from overseas or the provinces who presented themselves for admission on Sundays in ignorance of the Society's regulations, were enabled to obtain admission through the office on payment of 2s. 6d.

These privileges were extended to September 30th. It is not intended to renew any of them in future years unless in similarly exceptional circumstances.

7. H.M. QUEEN MARY.—At Her Majesty's express wish, she was admitted a Fellow of the Society on July 21st, 1937.

8. AWARD OF SILVER MEDAL.—The Society's silver medal was awarded to Mrs. E. B. Carter, F.Z.S., in recognition of her valuable services to the Society's Aquarium during the past twelve years.

9. CHANGES IN STAFF.—The appointments of Mr. J. M. McC. Fisher and Mr. Alan Best as Assistant Curators were confirmed. Dr. Burgess Barnett, Curator of Reptiles, left the Society's employ on September 30th, 1937, and the Curatorship of Reptiles is now combined with the Directorship of the Aquarium, under Mr. E. G. Boulenger. Mr. L. C. Bushby was reappointed experimentally with the title of Assistant Curator of Insects.

Though, strictly speaking, they fall outside the period covered by this report, the appointments of Mr. F. W. Bond, the Accountant, as Assistant Treasurer and Accountant, and that of Mr. S. A. Westwood as Assistant Accountant, should be mentioned.

These changes were recommended by a special Committee of Council appointed to investigate questions of salaries and other financial aspects of the Society's work. The Committee felt that these new arrangements were necessitated by the increasing complexity and scale of the Society's undertakings, and should enable a more efficient control of financial matters, both of detail and policy, to be exercised.

10. BEQUESTS.—The following bequests were made to the Society during the year:—

Miss Julia Lindley £1,000; Mrs. M. L. Paget £250; Mrs. Berthe M. Heer £80.

It was decided to expend Miss Lindley's bequest on the construction of a reptiliary at Whipnade, and Mrs. Paget's on the

provision of coloured picture-labels for birds. Mrs. Heer's bequest was specifically left for the provision of fruit to be distributed on Bank Holidays among those monkeys in the Society's collection which are neglected by the general public.

11. GIFT OF PORTRAITS OF PRESIDENTS.—The Earl of Onslow, our President, has arranged for the presentation to the Society of a series of portraits of all former Presidents. These have been hung in the Council Room, where they form a welcome addition to our records.

12. REVISION OF BY-LAWS.—Arrangements have been made for the complete revision, under legal advice, of the Society's By-laws.

13. NOTABLE SPECIMENS AND EXHIBITS.

Regent's Park.—The most important new exhibit was the beautiful male Okapi presented by H.M. the King of the Belgians to H.M. King George VI, and by him deposited with the Society. The animal, unlike its predecessor, was very healthy on arrival, and has remained in excellent condition throughout the winter.

A male and three female thoroughbred Arabian Camels, of different breeds, were presented by H.M. King Ibn Saud of Saudi Arabia. They will be placed on exhibition at the end of their period of quarantine.

A male Giant Forest Hog, the first of its kind to be exhibited publicly in any Zoo, was placed in the Ostrich House.

A female Bongo, the rare and beautiful antelope from the bamboo forests of Kenya, has been received. On the voyage she gave birth to a female calf, which is to be seen with its mother in the Antelope House.

A pair of the flesh-eating Giant Bats (*Vampyrus spectrum*), the first to reach Europe alive, were presented by General Sir George Macdonogh. The same benefactor also presented the Society with two giant centipedes from the West Indies.

A group of young Quetzal Birds was obtained in Ecuador by Dr. von Hagen, and brought over to Europe by Major Pam, the Treasurer of the Society. These are the first specimens of

this gorgeous and almost legendary species of Trogon to reach Europe alive. They will be placed on exhibition in the Bird House when they have completed their moult.

Two chimpanzees have been born in Regent's Park, both females. The first, born on November 28th, is the daughter of Fifi and Jackie, the second, born on December 25th, is the daughter of Sally and Koko. Both are flourishing, and will be exhibited to the public during the coming season.

Among the animals brought back in exchange from the Moscow Zoo by the Superintendent, the following may be specially mentioned: (1) the rare and beautiful Red-Breasted Geese; a pair of these are to be seen in the Three Island Pond, while the remainder have been transferred to Whipsnade; (2) a Steller's Sea-Eagle and (3) a Lammergeyer, both exhibited in the Birds of Prey Aviary.

The Aquarium was enriched by a collection of marine animals from the Red Sea, brought home by Overseer Vinall. Colonel E. T. Peel generously put his yacht at the Society's disposal for the purposes of collection.

On January 14th, 1938, the Society suffered a serious loss in the death of Mok, the male Gorilla. Death was due to a sub-acute pneumococcal infection, apparently derived from the acute attack of pneumonia which he experienced soon after his arrival in 1932.

Whipsnade.—A female baby Giraffe was born on Boxing Day, and named Boxer. Its astonishing growth (almost a foot during the first day, and rather over 2 inches a week since then) attracted great public interest.

A group of the fantastic-looking White-tailed Gnus, now extinct in the wild state, were exhibited, and for the first few months delighted visitors by their antics. As they became accustomed to the sight of human beings, they became less active. Luckily, a cinema record of their galloping and turning was obtained, and will be incorporated in the film dealing with Whipsnade (see Zoological Films, p. 19).

A group of African Buffaloes was transferred from Regent's Park, and makes a fine show.

Some Eared Pheasants (*Crossoptilon*) were added to the free-ranging inhabitants of the Park.

A serious loss to Whipsnade was that of the two last European Bison, of the group of four presented by His Grace the Duke of Bedford, K.G., in 1934.

14. NEW WORKS, 1937.

Regent's Park.—The Studio of Animal Art was formally opened by Lord Snell, C.B.E., LL.D., Chairman of the London County Council, on April 21st, 1937, and has since then been in constant use, the number of students attending ranging from over 100 to nearly 200 per week.

The balcony of the Fellows' Restaurant was glazed in, thus providing accommodation even in wet or inclement weather.

A new high-level reservoir has been installed in the Aquarium.

The buildings at Gloucester Gate were adapted for their new purpose as the Society's Quarantine Station by May 1st, and since then have proved of great service. The risk of infection, both from and to newly-imported animals, has been reduced to a minimum, and valuable space has been released for sick animals in the Sanatorium.

The Frog Lobby in the Reptile House has been completely reorganized, so as to exhibit the animals in a much more satisfactory way.

Some of the invertebrates, such as land crabs and hermit crabs, have been transferred from the Insect House to the Reptile House and Aquarium. In the space thus released, two new exhibits have been organized—one of insect pests, the other of small invertebrates magnified with the aid of large lenses.

No new buildings have reached the stage of construction during the year 1937, but all the preliminary preparations have been undertaken for one project of major importance—a new Elephant House. An Elephant House Reserve Fund was already being built up by annual payments from the general revenues of the Society. However, it would have been virtually impossible to have undertaken the building of a new house immediately had it not been for the great generosity of H.H. the Maharajah of Bhavnagar, who promised £10,000 towards the construction as a coronation gift for the worthy housing in the capital of the Empire of the great animals which, more than any other species, stand as an emblem of India. By the wish of the princely donor and gracious

permission of H.M. the King, the new house will be called "the King George VI Coronation Elephant House."

Two firms of architects were invited to submit plans, and after the fullest consideration by a special Committee and by Council, those of Messrs. Tecton, the architects responsible for the Penguin Pool and Gorilla House at Regent's Park, the Giraffe House, Elephant House, and Restaurant extension at Whipsnade, and indeed for all the new constructions of any magnitude undertaken by the Society since 1933, were selected. They are now being submitted for the approval of the various authorities concerned, and construction should begin in the spring. The foundation stone was laid by the President of the Society on December 31st, 1937. It is of black marble and bears the following inscription:

"This, the first stone of the King George VI Coronation Elephant House, the building of which was made possible by the munificence of H.H. the Maharajah Raol Shri Krishnakumarsinhji Bhavsinhji of Bhavnagar, was laid on the last day of 1937, the year of the Coronation of His Majesty King George VI."

The new house will embody many interesting and novel features. There will be no bars either inside or out; the public in the interior of the house will have the opportunity of two views of the animals, from slightly below, on the ground floor, and from above on an upper gallery; the dens will not be mere rectangular stables, but have been designed with special effects of perspective and proportion; the dens will be well lit but no light will shine directly into the eyes of visitors.

The new house will have six dens for elephants and four for rhinos.

15. *Whipsnade*.—Mr. John Skeaping, F.Z.S., was commissioned to decorate the walls of the inner room of the Hall Farm Restaurant. The results, in the shape of studies of various animals to be seen at Whipsnade, executed by means of an interesting spray-gun technique, have attracted much favourable comment from visitors.

A group of admirers of Mr. Skeaping's work, hearing that there was a possibility that his carving of a stallion (one of the largest extant carvings in wood) was in danger of being destroyed so that the head might be sold separately, subscribed to purchase it for

presentation to Whipsnade. It has been erected in the centre of the turning-circle on the edge of the Downs, where it makes a striking feature.

The Buffalo Paddock was completed, and preparations were made for planting a wood to serve as an alternative home for the Wolves, at the North end of Woodfield Paddock.

Under the expert advice of Mr. W. Arnold-Forster, a new scheme of planting was begun which should do much in future years to enhance the beauty of the Park.

16. CHILDREN'S ZOO.

Certain objections were raised to various features of the old Pets' Corner, notably to its site on a central lawn and to some of the arrangements for photography, and in October Council decided to close it in its present form. A revised and improved scheme has now been adopted, which will take effect this spring, for a Children's Zoo, which will occupy a site in the Park Paddocks. It will be in the charge of Mr. A. T. Best, one of the Assistant Curators, with the assistance of Mr. G. R. Doubleday. The entrance fee for children will be reduced to 6*d.*, and those desirous of having their photograph taken with one of the animals will arrange separately for this. The larger anthropoid apes will no longer be available for photography. The total area and the number of exhibits will be larger, and various features of special educational value will be included.

In 1937, over 97,000 visitors paid for admission between May and the end of September, over 92,000 photographs were taken, and about £1,000 worth of repeat orders dealt with, partly in the winter months.

17. PHOTOGRAPHIC DEPARTMENT.—This has now been re-organized to permit the undertaking of an additional and more serious objective—the building up of a collection of photographic records of the Society's exhibits and activities. In the past, the Society has relied for its photography on the personal efforts of members of its staff, acting in their private capacity. While the technical results have been of the highest standard, and have been put at the disposal of the Society in the most generous way, this system can never fully replace that of building up our own official photographic archives, similar to the collections to be found in institutions like the Berlin Zoo, which will be a permanent asset of steadily increasing value.

18. SCIENTIFIC and TECHNICAL CARD INDEX.—Interlocking with the photographic archives is the establishment of an extended card-index system for the species of animals in the Society's collection. The important card-index begun in 1903 was confined to recording dates of arrival, movement, departure or death, births, and in some cases illnesses and causes of death. With the extended system, all items of scientific interest or practical value are being included. The appointment of the Assistant Curators has made this project possible. A considerable amount of labour is involved in such a scheme, especially at its inception, but its value has already been demonstrated on a number of occasions, and will increase cumulatively with time.

19. OPEN EVENINGS.—In consequence of the great popularity of the open evenings in 1935, it was decided to throw open the Gardens twice a week during the summer of 1936, on Wednesdays and Thursdays, instead of on Thursdays only, and to extend the closing time from 11 to 11.30 p.m. This was continued during 1937, and the attendance constituted a record.

The numbers of visitors after 6 p.m. on late opening nights for the last five years are as follows :—

1933	28,756
1934	25,619
1935	64,176
1936	63,774
1937	65,500

The policy of having two open nights a week will be continued in 1938, but during the months of June, July and August only.

20. CATERING.—The standard of catering established by the Manager has been worthily maintained, and the Society's catering, notably in respect of the main restaurants at Regent's Park and at Whipsnade, enjoys a high reputation.

The Open Evenings at Regent's Park provide unusual opportunities for dining in the open air in London; and the late hour to which Whipsnade is open in summer provides the opportunity of visiting the Park after business hours and enjoying dinner in beautiful and interesting surroundings—an opportunity of which advantage is being taken by an increasing number of Fellows and visitors.

It has been decided in future to close the Lower Restaurant at Regent's Park on weekdays during the four winter months (November to February inclusive), and to accommodate the public in one section of the upper floor. However, a portion of the Upper Restaurant will be exclusively reserved for Fellows on these days, so that no inconvenience will, it is hoped, be caused to them, while substantial economies will be effected.

21. EDUCATION.—In the courses for L.C.C. teachers held in 1935 and 1936, more applications were received than could be dealt with. Accordingly, a further course was held in 1937. As before, it was conducted by Mr. H. R. Hewer of the Imperial College of Science and Technology, assisted by Mr. S. M. Watson and Miss Renton. In order to cover the ground more adequately, the number of lectures was increased from 4 to 5. The number registering for the course was 150 and the attendance was again high.

22. SCIENTIFIC RESEARCH.—Under the direction of the Society's Pathologist, Colonel Hamerton, the work of the Prosectorium has been as full and varied as ever. Full details are to be found in his report (p. 28).

As usual, the internal parasites from the animals were examined by a panel of parasitologists under the direction of Professor R. T. Leiper, F.R.S. Blood parasites were, as usual, examined by Dr. C. M. Wenyon, C.M.G., C.B.E., F.R.S., and the bacterial flora by Mr. J. E. R. McDonagh, F.R.C.S. In addition, protozoan parasites were examined by Professor Doris Mackinnon of King's College.

Dr. S. Zuckerman of Oxford University, together with two of his pupils, continued his observations on the reproductive cycle and behaviour of Primates. This work was facilitated by a grant from the Society to cover travelling expenses for the two research students.

The Bureau of Animal Population continued the Ecological Survey of Whipsnade Park, and an interim report of their results was presented at the scientific meeting on Nov. 2nd, 1937.

Miss D. Sladden continued her researches on the inheritance of food-preferences in stick insects, and was beginning an important piece of work on the repetition of Kammerer's results concerning the effect of light on the eyes of the cave-salamander *Proteus*,

when her career was tragically cut short by a fatal street accident. Arrangements were made by which the research on *Proteus* should be continued in the Zoology Department of University College, London, by Miss R. M. Renton.

Dr. Burgess Barnett continued his researches on the medical properties of snake venom, and on his leaving the Society's employ, was given a grant of £600 with the aid of which he is prosecuting them further during the present year.

He has now accepted the post of Superintendent of the Rangoon Zoo where, in addition to continuing his research work, he will undertake the collection of specimens for the Society.

Records of the nesting of wild birds at Whipnade were again taken by Keeper E. A. Billett. The results were of considerable interest, showing that 1937 was not so favourable as 1936 for the birds, the average number of eggs per clutch being slightly smaller, and the hatching and fledging percentages considerably reduced. A paper on the subject will appear in the *Proceedings*.

More wild birds were ringed, and various recaptures of birds ringed in 1936 were recorded in a paper in *British Birds*, vol. 31.

23. SCIENTIFIC PUBLICATIONS.—The reorganization of the scientific publications, announced in last year's Report, has been eminently successful. The division of the *Proceedings* into two series, for general and experimental papers on the one hand, and those on systematic and morphological subjects on the other, has led, as was anticipated, to a considerable increase in the number of papers submitted dealing with those branches of zoology whose development has been most recent, such as ecology, comparative and developmental physiology, experimental studies of animal behaviour, etc. There has been no difficulty in obtaining material of high scientific interest for a complete volume of *Transactions* during the year. In fact, the volume of the contributions submitted has been so large that the Publication Committee are being compelled to exert a very rigorous selection. It is difficult to single out particular papers from among those published during the year, but the following may perhaps be specially mentioned:—

In the *Transactions*, a monograph on the development of the skull in the Duck-billed Platypus by Dr. de Beer; and an account of the autonomic nervous system in monkeys by Dr. Zuckerman.

In the *Proceedings*, Series A, a number of important contributions to comparative physiology, including the demonstration of the need for a reproductive vitamin in crustacea; several papers on the relative growth of parts in animals, bringing out numerous new facts of theoretical interest; a valuable review of chromosome behaviour in relation to animal evolution, by Dr. Vandel; several papers on animal behaviour, including a review of the breeding behaviour of African hornbills by Mr. Moreau; and the first adequate study of the dermatoglyphs (handprints) of non-human primates by Dr. Wolff. In the *Proceedings*, Series B, valuable contributions to our knowledge of the structure of flightless birds, and of the fossil history of fishes, amphibia, reptiles, and primates; proof that the Bower-birds are not, as had previously been thought, closely allied to the Birds of Paradise; and new data concerning brain-growth in monkeys.

24. SPECIAL ENTERTAINMENT.—A Ball in aid of Queen Charlotte's Hospital Fund was again given in the Gardens in July. More than 1,500 guests attended, and over £1,000 was raised for the hospital.

25. ZOO MAGAZINE.—This has continued to present popular articles and striking photographs of high standard to a wide circle of readers. It is now proposed to make its appeal rather more general, and to mark this the title will shortly be altered to *Animal Magazine and Zoo*.

26. AQUARIUM ADMISSION.—It has been decided to try the experiment of charging the reduced admission fee of 6d. on Saturdays as well as Mondays, during 1938.

27. ZOOLOGICAL FILMS.—During the year an agreement was entered into with Strand Films, Ltd., the well-known company concerned with documentary film production, to produce a series of films of subjects concerned with the Society and its collections and with zoology in general. For this purpose a special subsidiary company was formed, entitled Zoological Film Productions, Ltd., and arrangements made for the production of twelve short films for general public showing, six educational films, and up to 10,000 feet of film for purposes of scientific record. The Carnegie United Kingdom Trust was approached, and made a grant of £1,000 towards the cost of the educational and scientific side of the programme. Under the arrangement, a camera-man is always

available so that interesting incidents at Regent's Park or Whipsnade shall not be missed, and the planning and production of the films are carried on under the supervision of the Society's staff.

Three films, one on the subject of size in animals, a second on the care of the young in vertebrates and the third a comedy treatment of the relation between visitors and exhibits, have been completed, and educational versions of the first two are in preparation. A second trio is almost complete—on the geographical distribution of animals, on the behaviour of monkeys, and on Whipsnade; and three more—one a documentary film of the activities that go on behind the scenes at Regent's Park, a second on the evolution of the hand, and the last on Spring at the Zoo, are in preparation. In addition, a considerable amount of material of scientific interest has been amassed, including the first adequate record of the remarkable displays of various Birds of Paradise.

The close liaison between experts in documentary film production on the one hand, and experts in zoological matters on the other, is ensuring an unusually high level of combined interest and technical perfection in the films of both categories. Through this venture the Society is making a fuller use of the opportunities provided by its collections, for purposes of education, both in the extended and the restricted sense.

28. EXHIBITION OF ANIMAL ART.—After Christmas, an exhibition was staged in the Tea Pavilion, of the work of students in the Studio of Animal Art during the year, together with that of other artists. The exhibition was of high standard, and it is hoped to make arrangements for a similar exhibition to be held in one of the regular exhibition galleries in succeeding years. The awards of the Council of prizes for the best works by students in the studio during the year were adjudicated by a committee consisting of Mr. Charles Marriott, Mr. J. C. Moody, Mr. J. Skeaping, and the Secretary. The first prize was awarded to Miss Ferelyth Howard, the second divided between Miss J. de Naeyer and Miss D. Freeman.

29. MIDSUMMER EVE ENTERTAINMENT, WHIPSNAD.—A special entertainment was held at Whipsnade on Midsummer Eve. The Park was kept open until 1 a.m., a marquee for dancing was erected near Ouseley Kiosk, and there was a bonfire on the edge of the Downs.

30. ZOOLOGICAL SPORTS AND SOCIAL CLUB.—During the year, on the initiative of the men themselves, and with the cordial support of the Council, the Sports and Social Club was formed to include men from all the departments, menagerie, works and gardeners'. The membership is over 100. The upper floor of the Tea Pavilion has been utilized as premises for the Club during the winter months. The formation of the Club has promoted good fellowship and solidarity in the Gardens.

31. BROADCASTING AND LECTURING.—Mr. Seth-Smith continued his wireless talks to children under the title of "The Zoo Man." These are one of the most popular features of the B.B.C. programmes, and Mr. Seth-Smith received over 100 letters a week in connection with them.

Dr. Huxley was invited to give the Juvenile Lectures at Christmas at the Royal Institution, and chose as his subject *Rare Animals and the Disappearance of Wild Life*. The lectures were well attended and well reported and drew attention to the problem of wild life conservation.

C. FELLOWS AND MEMBERS.

32. ROLL OF FELLOWS.—The number of Fellows and Fellows-Elect on January 1st, 1937, was 8,307, and on January 1st, 1938,

	1936.	1937.
Compounders at £30 (Elected before Dec., 1906)	266	243
Compounders at £45 (Elected after Nov., 1906)	422	430
Compositions remitted	20	21
Paying annually £3	7,260	7,440
Dormant (paying £1)	253	249
Do. subscriptions remitted	8	8
Admission Fees unpaid	78*	63*
Professional Fellows	—	58
Do. Admission Fees unpaid	—	6*
	8,307	8,518

* These entries relate almost entirely to Fellows elected at the December Meetings, who did not pay their dues until the following January.

was 8,518. In 1937, 605 Fellows were elected or re-admitted as compared with 650 in 1936.

33. IMPERIAL FELLOWS.—The following were elected Imperial Fellows :—

The Rt. Hon. Joseph Aloysius Lyons, P.C., C.H., Prime Minister's Lodge, Canberra, Australia.

H.H. Maharajah Raol Shri Krishnakumarsinhji Bhavsinhji Bhavnagar, Bhavnagar, Kathiawar, India.

34. FOREIGN MEMBERS.—The following were elected Foreign Members to fill vacancies in the List :—

Dr. Erik Andersson Stensiö, Paleozoologiska Avdelningen, Naturhistoriska Riksmuseum, Stockholm, 50, Sweden.

Dr. Victor Van Straelen, Musée Royal Naturelle de Belgique, Rue Vautier 31, Bruxelles, Belgium.

Prof. Ross Granville Harrison, Graduate School, New Haven, U.S.A.

35. CORRESPONDING MEMBERS.—The following were elected to fill vacancies in the List :—

Ambrose Pratt, Esq., Surrey Cottage, Scottsdale Street, Surrey Hills, E.10, Victoria, Australia. (President of the Royal Zoological and Acclimatization Society of Victoria, Australia.)

George Gayford Simpson, Esq., Ph.D., Assistant Curator, American Museum of Natural History, New York, U.S.A.

Prof. Walther Vogt, M.A., Anatomisches Anstalt, München, Germany.

Dr. Erwin Stresemann, Verwalter der ornithologischen Abteilung des Zoologischen Museums, Invalidenstr. 43, Berlin, N.4, Germany.

Dr. Camille Arambourg, Musée National d'Histoire Naturelle, 9, Rue de Buffon, Paris, France.

36. LIST OF FELLOWS AND MEMBERS.—A revised edition will be published early in June, 1938. Any corrections should be sent to the Secretary before April 30th, 1938.

D. SCIENCE AND ANIMAL CONSERVATION.

37. SCIENTIFIC MEETINGS.—During the year the customary number (12) of Scientific Meetings were held, and were well attended.

38. SCIENTIFIC PUBLICATIONS.—During the year, under the new arrangements for publication, complete volumes of *Proceedings*, Series A (General and Experimental), Series B (Systematic and Morphological), and Series C (Abstracts of all Papers published in *Proceedings* and *Transactions*) were issued. Of the *Transactions*, Volume XXIII was completed.

39. PUBLICATION COMMITTEE.—The Council wishes to acknowledge the assistance received during the past year from the members of the Committee of Publication, upon whom devolved, in accordance with the By-laws, the arrangement and supervision of the Society's Scientific Publications.

40. ZOOLOGICAL RECORD.—The complete Volume, No. 73, dealing principally with the literature of 1936, was published on January 18th, 1938.

41. ZOOLOGICAL RECORD : FINANCE.—Beginning with Volume 59 (literature of 1922), the Society undertook to continue responsibility for the *Record* if its loss on each volume did not exceed the sum of £500.

It has been arranged to keep accounts of the *Record* from Vol. 59 in the form of a "Zoological Record Fund" made up to the 31st of December each year. To this are credited all receipts (subscriptions and sales of the current Volume and of other Volumes from 59 onwards) received within the year, including the Society's own contribution of £500. From it is deducted the cost of production. Societies, Institutions and individuals who wish the *Record* to be maintained are requested to give their support in the form of annual donations to the Record Fund.

It will be seen that the position has not improved, and the loss on each volume is still very heavy, much in excess of the contribution of £500 per annum made by this Society, so that unfortunately the Reserve Fund stands lower at December 31st than it did at the end of the previous year.

STATE OF "RECORD FUND" AT DECEMBER 31ST, 1937.

	£	s.	d.	£	s.	d.
Balance from Vol. 72 (Annual Report, 1936, page 20)				1,999	16	9
Donations to Vol. 72 received in 1937 :—						
Royal Entomological Society	25	0	0			
Smithsonian Institution	20	8	4			
University of Michigan	20	6	11			
British Museum of Nat. Hist.	200	0	0			
British Association	50	0	0			
				315	15	3
Donations to Vol. 73 received in 1937 :—						
Zoological Society of London	500	0	0			
Schmidt, W. L.	1	0	0			
Shoemaker, C. R.	1	0	0			
Rathbun, Miss M. J.	1	0	0			
Linnean Society	15	0	0			
Royal Entomological Society	25	0	0			
				543	0	0
				2,858	12	0
Cost of Vol. 73 (exclusive of Office Expenses) :—						
Letterpress	1,433	16	0			
Editor	200	0	0			
Recorders	343	8	8			
Searching and assistance to Recorders	244	12	9			
Distribution	21	18	4			
Slips for Recorders	12	8	0			
	2,256	3	9			
Subscriptions to Vol. 73 to December 31st, 1937	781	10	0			
Sales of Vol. 73 to December 31st, 1937	104	3	2			
	885	13	2			
Loss on Vol. 73				1,370	10	7
				1,488	1	5
Add amount received on a/c of Vols. 59-72 since last adjustment				342	19	0
Balance of Fund to Vol. 74				£1,831	0	5

42. NOMENCLATOR ZOOLOGICUS.—Under the direction of Dr. S. A. Neave, O.B.E., work was continued on this important project of a complete list of the generic names of animals.

Arrangements are now being made to begin printing during the late summer, and publication of the four large volumes should be completed before the end of 1939.

43. LIBRARY.—The Librarian has re-valued the library, and this is now insured for £60,000, its approximate replacement value. The figure of £35,000 given in the accounts (p. 73) represents a conservative estimate of its selling value, as Council considers this a more suitable figure for the purpose of estimating the Society's assets.

1,146 volumes were borrowed under the regulations.

The following is a list of the chief additions to the Library during the past year:—

PRESENTED.

<i>Donor.</i>	<i>Donation.</i>
BARBOUR, DR. THOMAS, C.M.Z.S.	October Farm. From the Concord Journals and Diaries of William Brewster. 1936.
BRERETON, MRS. CLOUD- ESLEY.	Adventures among Birds. By Three School-boys. 1926.
DEWAR, DOUGLAS, B.A., F.Z.S.	A Challenge to Evolutionists. By D. Dewar. 1937.
DUNCAN, F. MARTIN, F.Z.S.	The Essentials of Histology. By Sir Edward Sharpey-Schafer. 1920.
HEMMING, FRANCIS, C.B.E., F.Z.S.	Hübner: A bibliographical and systematic account of the entomological works of Jacob Hübner and of the supplements thereto by Carl Geyer, Gottfried Franz von Frölich, and Gottlieb August Wilhelm Herrich-Schäffer. By Francis Hemming. 2 vols. 1937.
HOLMAN, MISS A. G.	Songs from 'The Compleat Angler,' illustrated by A. G. Holman. 1929.
HUXLEY, J. S., M.A., D.Sc., F.R.S., F.Z.S.	Behringwerk-Mitteilungen. Heft 7. Die europäischen und mediterranen Ottern und ihre Gifte. 1936. My Fill of Days. By Sir Peter Chalmers Mitchell. 1937. The Spotted Lion. By K. Gandar Dower. 1937.

- | <i>Donor.</i> | <i>Donation.</i> |
|---|--|
| JONES, SURGEON-CAPT.
K.H., R.N., F.Z.S. | Russian and Nomad. By E. Nelson Fell.
1916.
William Harvey. By D'Arcy Power. 1897.
The Master of Game by Edward, Second
Duke of York: The Oldest English Book
on Hunting. Edited by W. A. and F.
Baillie-Groham. 1909.
In the Grip of the Nyika. By J. H. Paterson.
1909.
Ootheca Woolleyana. By John Woolley
and Alfred Newton. 1864-1907.
Far Away up the Nile. By John G. Millais.
1924.
The House in the Water. By Chas. G. D.
Roberts. n.d.
Kings in Exile. By Chas. G. D. Roberts.
1909. |
| KEARTON, CHERRY, F.Z.S. | I visit the Antipodes. By Cherry Kearton.
1937. |
| LONGMANS, GREEN & Co. | Animals and Man: Studies in Comparative
Psychology. By David Katz. 1937. |
| MOORE, JAMES L. | The Canine King: the Working Sheep Dog.
By J. L. Moore. n.d. |
| OXFORD UNIVERSITY
PRESS. | St. Kilda Papers. 1931 |
| RENSHAW, DR. GRAHAM,
F.Z.S. | Pre-Historic America. By the Marquis de
Nadaillac. 1885. |
| RAINIER, MISS YOLLAND. | Visits to the Zoological Gardens. By Fred-
erica Graham. n.d. |
| ROULE, PROF. LOUIS,
F.M.Z.S. | Les Poissons et le Monde vivant des Eaux.
Tome X. 1937. |
| TENISON, LT.-COL. W.P.C.,
D.S.O., F.Z.S. | Giant Fishes, Whales and Dolphins. By
J. R. Norman and F. C. Fraser. 1937. |

PURCHASED.

- ARCHER (SIR GEOFFREY) and GODMAN (EVA M.). The Birds of British
Somaliland and the Gulf of Aden. 2 vols. 1937.
- ARTSCHWAGER (ERNST). Dictionary of Biological Equivalents. German-
English. 1930.
- AYMAR (GORDON C.). Bird Flight: a Collection of 200 action photographs.
1936.

- BEATTY (R. T.). Hearing in Man and Animals. 1932.
- BOND (J.). Birds in the West Indies. 1936.
- BORRADAILE (L. A.), POTTS (F. A.), EASTHAM (L. E. S.), and SAUNDERS (J. T.). The Invertebrata. 2nd edtn. 1935.
- BRACHET (A.). *Traité d'embryologie des Vertébrés*. Revised edtn. 1935.
- BURR (MALCOLM). British Grasshoppers and their Allies. 1936.
- DARLINGTON (C. D.). Recent Advances in Cytology. 1937.
- DE BEER (G. R.). The Development of the Vertebrate Skull. 1937.
- DOBZHANSKY (T.). Genetics and the Origin of Species. 1937.
- ELTON (C.). Animal Ecology and Evolution. 1930.
- FISHER (R. A.). The Genetical Theory of Natural Selection. 1930.
- GORDON (SETON). Thirty Years of Nature Photography. 1936.
- GRAY (HENRY). Anatomy, Descriptive and Applied. 26th edtn. Edited by T. B. Johnston. 1935.
- GREGORY (W. K.) and RAVEN (H. C.). In Quest of Gorillas. 1937.
- GRINNELL (J.), DIXON (J. S.), and LINSDALE (J. M.). Fur-bearing Mammals of California. 2 vols. 1937.
- HESSE (R.). Ecological Animal Geography. 1937.
- HODGSON (W. C.). The Natural History of the Herring of the Southern North Sea. 1934.
- IMMS (A.D.). Recent Advances in Entomology. 2nd revised edtn. 1937.
- KIRKMAN (F. B.). Bird Behaviour. A Contribution based chiefly on a Study of the Black-headed Gull. 1937.
- KLEINSCHMIDT (O.). The Formenkreis Theory and the Progress of the Organic World. 1930.
- LYDEKKER (R.). The Game Animals of Africa. 2nd edtn. revised by J. G. Dollman. 1926.
- NEAL (H. V.) and RAND (H. W.). Comparative Anatomy. 1936.
- ORTON (J. H.). Oyster Biology and Oyster Culture. 1937.
- PARKER (T. J.) and HASWELL (W. A.). A Textbook of Zoology. 5th revised edtn. 2 vols. 1936.
- PEATTIE (D. C.). Green Laurels : the Lives and Achievements of the Great Naturalists. 1937.
- PRATT (A.). The Call of the Koala. 1937.
- PRIEST (C. D.). The Birds of Southern Rhodesia. 4 vols. 1933-1936.
- SAVORY (T. H.). Mechanistic Biology and Animal Behaviour. 1936.
- SCOTT (W. B.). A History of Land Mammals in the Western Hemisphere. Revised edtn. 1937.
- STEVENSON-HAMILTON (J.). South African Eden. 1937.

STOCKARD (C. R.). *The Physical Basis of Personality*. 1931.

SYNGE (P. M.), ALLEE (W. C.), and SCHMIDT (K. P.). *Mountains of the Moon*. 1937.

WRIGHT (W. B.). *The Quaternary Ice Age*. 2nd edtn. 1937.

44. PROSECTORIUM.—This department continues its useful functions by inquiring into the causes of death of animals in the collection, by providing accommodation and material for voluntary research workers in Anatomy, Bacteriology and Parasitology. Pathological and anatomical material, including brains 157, skulls 74, bodies, etc., 40, to the value of £80, has been distributed to private workers, museums and other institutions, who in return have given valuable advice. Among the institutions the following may be mentioned :—

Royal College of Surgeons.

Royal College of Veterinary Surgeons.

London School of Hygiene and Tropical Medicine.

Bland-Sutton Institute of Pathology, Middlesex Hospital.

Wellcome Bureau of Scientific Research.

Bedford College for Women, Regent's Park.

Anatomical Departments of the Universities of Oxford, Manchester, Leeds, Sheffield and University College, London.

National Institute for Medical Research.

Nature of Disease Institute.

Since the Anatomical Research Fellowship has been in abeyance, duties concerned with the collection and despatch of anatomical material have been undertaken by the Pathologist.

45. PATHOLOGY.—Col. A. E. Hamerton, the Society's Pathologist reports :—

“The average strength for the year of the Society's collection, excluding Aquarium, Reptile and Insect Houses, is estimated at 1,109 for Mammals (inclusive of many small short-lived species) and 1,138 for Birds.

The number of deaths in the Menagerie investigated by post-mortem examination was 1,045, of which 300 were mammalian; of these 93 died within 6 months of arrival. Of 559 avian deaths 155 occurred during this period of acclimatization.

The mortality among small birds was unusually high during the protracted fogs of November and December.

The commonest causes of death are :—

	<i>Mammals.</i>	<i>Birds.</i>	<i>Reptiles, etc.</i>	<i>Total.</i>
<i>Diseases of the Respiratory System</i>	54	104	57	215
<i>Diseases of the Digestive System ...</i>	28	87	18	133

Other causes of considerable mortality are specified as follows :—

	<i>Mammals.</i>	<i>Birds.</i>	<i>Reptiles.</i>	<i>Total.</i>
<i>Diseases of the Urinary System ...</i>	7	45	3	55
<i>Diseases of the Circulatory System...</i>	11	23	4	38
<i>Tuberculosis</i>	10	22	4	36
<i>Mycosis</i>	4	25	2	31
<i>Rickets and Allied Bone Diseases ...</i>	18	9	2	29
<i>Diseases of the Generative System ...</i>	1	14	10	25
<i>Animal Parasites</i>	6	10	8	24
<i>Diseases of the Liver and Gall Bladder</i>	6	8	2	16

Further details and cases of pathological interest will be noted in my annual Report to be published as usual in *The Scientific Proceedings.*"

46. ANATOMICAL RESEARCH FELLOWSHIP.—On the termination of Dr. Burgess Barnett's appointment (see p. 10), the Fellowship became vacant. The question of filling it will be considered during the coming year.

47. OTHER SCIENTIFIC RESEARCH IN THE GARDENS.—Details of this will be found in the General Report for the year on p. 17.

48. HELMINTHOLOGY.—During the past year the Society's Pathologist has collected the parasites from all animals dying in the Gardens, except from those reserved, owing to their rarity, for detailed anatomical study. The specimens have been sent daily in a fresh condition to Professor Leiper, F.R.S., at the Department of Parasitology, London School of Hygiene and Tropical Medicine, and have been used either for study of life-

cycles or for systematic work. Quarterly reports have been submitted by him to the Prosectorial Committee dealing briefly with those forms of scientific interest or pathogenic significance and the rest of the material has been preserved for later detailed study by a panel of parasitologists working in collaboration with Professor Leiper.

49. OPTHALMOLOGY.—The work of this department has been continued by Miss Ida C. Mann, D.Sc., M.B., B.S., F.R.C.S., the Society's Honorary Consulting Ophthalmologist. Remarkably few cases of eye-disease have been reported this year.

50. SCIENTIFIC AND OTHER GRANTS.—The following grants have been made :—

£10	St. Thomas's Hospital (for services in connection with Society's staff).
70	Bureau of Animal Population, for an ecological survey of Whipsnade.
50	Bison Society for 1936-7.
10	National Trust, towards preservation of Wicken Fen.
5	Oxford University Biological Expedition to the Faroes.
2	Royal Empire Society, towards Sir Stamford Raffles bedroom.
50	D. Lack, for study of Galapagos Ground-finches.
20	International Commission on Nomenclature.
50	Dr. S. Zuckerman, for travelling expenses of his students in connection with his researches into the behaviour and reproduction of Primates.
2 2s.	International Committee for Bird Preservation.
50	Prof. J. P. Hill, for embryology of Monotremes.

51. LOAN OF THE SOCIETY'S ROOMS.—The Society's Rooms have been lent to the Association of British Zoologists, the British Ornithologists' Union, the Avicultural Society, the British Trust for Ornithology, the Society for the Preservation of the Fauna of the Empire, the South-Eastern Union of Scientific Societies, the Society for the Bibliography of Natural History, Ornamental Pheasant Society, Association of Applied Biologists and the Association of Bird Watchers and Wardens.

52. ANIMAL PROTECTION.—(1) *Society for the Preservation of the Fauna of the Empire*.—As mentioned in previous reports, this

organization is provided with accommodation in the Office building of the Zoological Society. The Council is appreciative of the valuable work being carried out by the Fauna Society and proposes to continue its support.

Close touch is maintained with its work through our President, Lord Onslow, who is also President of the Fauna Society; through the Secretary, who has been appointed a Member of its Executive Committee; and through Mr. H. G. Maurice, a Member of Council, who in October 1936 succeeded Mr. C. W. Hobley as Secretary of the Fauna Society.

The minimum subscription to the Fauna Society is only 10s. per annum and it is hoped that more Fellows of the Zoological Society will support it. It publishes three times a year a Journal which contains much interesting matter relative to its activities.

Communications should be addressed to the Secretary of the Society for the Preservation of the Fauna of the Empire, c/o Zoological Society of London, Regent's Park, N.W.8.

(2) *International Bird Preservation*.—The British section of the International Committee for Bird Preservation has the Society's Offices as its registered address, and the Society gives its assistance in various ways.

The Committee is engaged upon three main projects: (1) The framing of an improved International Convention for the Protection of European Birds; (2) an inquiry into the status of ducks and geese in Europe, the decrease in whose numbers is becoming serious; and (3) an inquiry into the destruction of sea-birds by oil-pollution.

(3) *British Trust for Ornithology*.—Permission was given by Council for The British Trust for Ornithology to use the Society's Offices as their registered address, since Mr. Fisher is undertaking the duties of Honorary Treasurer.

53. CHILLINGHAM CATTLE.—In 1931 the Council, in view of the grave danger threatening the existence of the unique herd of English White Park Cattle at Chillingham Castle, Northumberland, agreed to contribute the sum of £100 a year for seven years towards its support. Three trustees were appointed. Of the original three, Mr. H. S. Gladstone is still serving; Captain Cecil Graves, Viscount Grey's heir, was appointed to succeed Viscount Grey on the death of the latter; during 1935, Earl Grey was

nominated to succeed Sir Peter Chalmers Mitchell, who had resigned.

The herd and the arrangements made by the Trustees, with the approval of Council, were fully described in the Annual Report for 1932. The need for preservation remains and it is hoped that individual Fellows of this Society will contribute towards the cost. During 1937, in addition to the Society's contribution of £100, subscription and donations amounted to £136 11s. 6d. A balance carried forward from 1936 amounted to £35 10s. 11d., and the balance of the £500, amounting to £227 17s. 7d., was defrayed from the income of the De Arroyave Trust Fund.

54. ANIMALS AND FILMS.—An advisory panel was appointed, as mentioned in the Report for 1935, to advise the British Board of Film Censors on this subject. Major E. E. Austen, D.S.O., was appointed by the Council to represent the Society, and Mr. C. W. Hobley, C.M.G., to represent the Fauna Society. The Committee has met on several occasions and is working in satisfactory accord with the Board.

E. REGENT'S PARK GARDENS.

(I) VISITORS, &c.

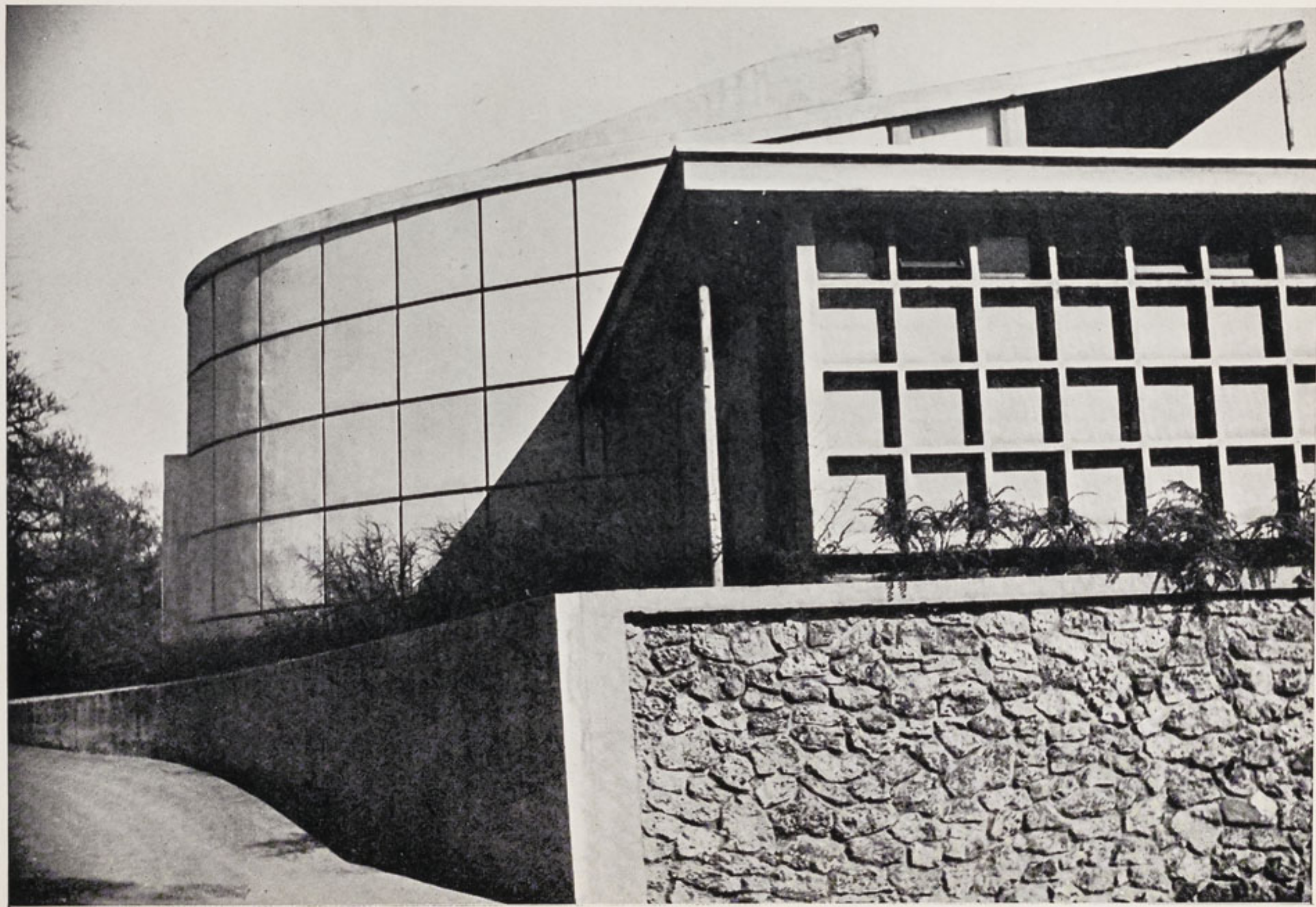
55. NUMBER OF VISITORS.—The total number of visitors to the Gardens in 1937 was 1,946,897. The following Tables give comparative figures:—

Visitors to the Gardens.

1928	2,225,662	1933	1,557,791
1929	2,047,090	1934	1,639,611
1930	2,101,438	1935	1,962,136
1931	1,816,052	1936	1,962,122
1932	1,552,535	1937	1,946,897

Visitors on Sundays and Week-days.

	1936	1937
Sundays	188,948	188,693
Weekdays	1,773,174	1,758,204



ART STUDIO

Visitors on Bank Holidays.

			1936	1937
Easter Monday	49,865	82,775
Whit Monday	84,075	67,180
First Monday in August	63,770	49,568
Boxing Day	1,917	3,624 (Dec. 27th.)
			<hr/>	<hr/>
			199,627	203,147
			<hr/>	<hr/>

56. AQUARIUM: VISITORS.—The Aquarium remains popular and was patronised by nearly 14 per cent. of those that entered the Gardens. The Aquarium was opened on Wednesday and Thursday evenings from June 2nd to September 9th, at the usual charges for admission.

The total number of visitors to the Aquarium was 271,933 as compared with 259,500 in 1936.

Visitors to the Aquarium.

			1936	1937
Sundays	38,572	40,910
Week-days	220,928	231,023

57. OPEN EVENINGS.—It is impossible to state the exact numbers of visitors, as many who came during the day remained until evening. The total number booked in after 6 o'clock on the Wednesday and Thursday evenings from June 2nd to September 9th, 1937, inclusive, was 65,500, of whom 15,779 entered by Fellows' signatures or tickets, 46,938 were adults paying one shilling each, and 2,783 were children paying sixpence. The Gate money was £2,416 9s. 6d. and £559 11s. 0d. was paid for admission to the Aquarium.

Visitors, open evenings.

			1936	1937
Total Visitors	63,774	65,500
Signatures and Tickets	16,326	15,779
Paying @ 1s.	44,822	46,938
„ @ 6d.	2,626	2,783

This year the Gardens will be open on Wednesday and Thursday evenings until 11.30 p.m. from June 1st to August 31st, both inclusive.

Dinners at 7s. 6d. and 5s. 0d. will be served in the Fellows' Restaurant during the season on the open evenings. It would greatly assist the Catering Department if Fellows wishing to dine there on those nights would kindly advise the Management beforehand, at latest on the same day before noon. The Management would also be glad to receive any cancellations of tables reserved for the evening before 6.0 p.m.

58. BAND.—The Band of H.M. Grenadier Guards was engaged for the summer, and played on Sunday afternoons and on the open evenings.

59. MEDICAL ATTENDANCE AT THE GARDENS.—With the number of visitors to the Gardens nearly reaching 2,000,000, and with a numerous staff, illness and accidents requiring first-aid assistance inevitably take place. There is a well-equipped Red Cross Room attached to the Prosectorium to which cases are taken, and, during the summer, a Red Cross Tent.

60. GUIDES AND PICTURE POST-CARDS.—The Guides to Regent's Park and to Whipsnade were rewritten. In their new format, they have continued to prove very popular, 88,215 copies of the London Guide having been sold, as compared with 85,371 in 1936. In 1935, one copy of the Guide was sold for every 26.22 visitors, in 1936 one for every 22.98 visitors, and in 1937 one for every 22.06 visitors. 54,288 copies of the Whipsnade Guide were sold in 1937 (one for every 10.23 visitors), compared with 47,358 in 1936 (one for every 10.06 visitors).

Of the Society's picture postcards 308,537 were sold in the London Gardens and 87,172 at Whipsnade during 1937, as compared with 315,438 and 65,253 respectively during 1936.

The totals for London and Whipsnade together were as follows :—

	1936	1937
Guides	132,729	142,503
Picture Postcards	380,691	395,709

(II) CATERING.

61. REFRESHMENT DEPARTMENT.—Mr. A. Schorno, as Catering Manager, has continued to be successful in regard both to the standard of the catering and to the financial side of his department.

62. REFRESHMENT DEPARTMENT : ACCOUNTS.—Messrs. W. B. Keen and Co., the Society's Auditors, audited the accounts for the year.

The gross profit for the year 1937 amounted to £45,995 16s. 7d. Deducting the manufacturing and other working expenses amounting to £38,528 6s. 2d., and adding lavatory and other sundry receipts (£1,642 18s. 9d.), there remains a trading profit of £9,110 9s. 2d. After deducting the Manager's bonus (£200) and the contribution to the Equipment and Repairs Stabilization Fund (£5,000), there was a net profit of £3,910 9s. 2d. In addition £4,924 was received by way of rent of the department and lavatories, making a total of £8,834 9s. 2d. Of this a sum of £1,958 15s. 1d. has been repaid to the Works Department for work carried out during the year. The balance of £6,875 14s. 1d. has been passed to the General Account.

The expenditure on Equipment and Repairs amounted to £4,549 10s. 4d., against the contribution of £5,000, leaving a balance of £450 9s. 8d., which has been placed to the credit of the Equipment and Repairs Stabilization Fund.

(III) GARDENS, REGENT'S PARK.

63. STAFF.—*Menagerie* : Overseers, 5; 1st Class Keepers, 28; 2nd Class Keepers, 17; 3rd Class Keepers, 17; Helpers and miscellaneous men, 63. Total 130.

Works Department : Normal number, about 40, increases to more than double this number during the season.

Gardening Staff : 20.

Electricians : 6.

Refreshment Department : Summer staff, 270; Winter staff, 90.

64. GARDENING DEPARTMENT.—Under the supervision of Mr. W. E. Puddle, Head Gardener, who is responsible for the Gardening both at Regent's Park and Whipsnade, the Gardening staff maintained a brilliant show of flowers throughout the season. In addition to routine work, various shrubberies of evergreens have been cleared and replanted with flowering shrubs. The cut-flower department, which produces table decorations for the restaurants at Regent's Park and Whipsnade, continues to be successful.

65. ELECTRICAL DEPARTMENT.—This department, under the supervision of Mr. H. P. Davolls, the Society's Engineer, in addition to routine work, has extended the system of lighting which has been in use for the illumination of the Gardens on open evenings.

66. WORKS DEPARTMENT.—The Clerk of the Works, Mr. E. A. Temperton, and his staff have carried out the following major works, in addition to many thousands of items of repair and maintenance :

Painting:—

Refreshment Department : all bars and lavatories, Mappin Terrace Pavilion, Pavilion Restaurant interior, Cheap Tea Pavilion, Out-door Tea Service, North Gate Kiosk.
 Main offices : interior and exterior.
 Lion House : outside cages.
 Studio of Animal Art : interior and exterior.
 Small Mammal House : interior.
 Garden seats and waste paper baskets.
 Curator's House : interior and exterior.
 Gazelle Sheds : fence.
 Giraffe Paddock : fence.
 Cattle Sheds : interior, exterior and fence.
 Aquarium : exterior.
 Antelope House : inside dens.
 Tropical House.
 Swine Paddocks.
 Quarantine Station : interior and exterior.
 Zebra House : exterior.
 Cats House : exterior.

Clock Tower : exterior.
 Bandstand : exterior.
 Civets' Cages : exterior.
 Chimpanzees' House : interior and exterior.
 Elephant House : exterior.
 Penguin Pond.
 Tapir House.
 Keepers' Lodge : exterior.
 Sanatorium : interior and exterior.
 North Mammal House : interior and exterior.

Miscellaneous Works :—

Alterations were made to the sleeping dens in the Lion House, the slides were overhauled, floors re-concreted and wood-blocks laid.
 Walls were concreted and existing iron fence capped in Zebra and Giraffe Paddocks.
 A new partition was made and fixed in the Pavilion Restaurant.
 Flooring was laid in the Pets' Corner and everything made complete for opening.
 A new false roof was constructed under the Mappin Terrace mountains in order to prevent leakage of water into the Aquarium.
 Approximately 600 yards of concrete kerb was made to fence along south side of Park Paddocks.
 The yard and wall of the Sanatorium were concreted and a small shed built.
 The old chest-pale fence on the south bank of the Canal, which had fallen into a bad state of repair, was replaced by one of wire supported on concrete posts with an overhang.

Roads :—

Upwards of 12,000 square yards of paths and roads were relaid in Tarmacadam during the year. 18,000 square yards were tarred and dressed with granite chippings.

(IV) MENAGERIE.

68.—COMMISSARIAT.—In the following table are given the quantities of the principal kinds of food, etc., consumed in the Gardens in 1937 :—

Class.	Description.	Number or Quantity.
Fodder, etc.	Hay	120 tons.
"	Clover	162 tons.
"	Straw	101 tons.
"	Tares	29,565 bundles.
"	Peat-Moss Litter ...	62 bales.
Grain, etc.	Oats	340 $\frac{1}{4}$ qtrs.
"	Quaker Oats	1 ton, 16 $\frac{1}{4}$ cwts.
"	Bran	195 qtrs.
"	Middlings	7 cwts.
"	Wheat	56 $\frac{1}{2}$ qtrs.
"	Wheat-Mixture	23 $\frac{1}{2}$ qtrs.
"	Barley Meal	12 cwts.
"	Maize	58 $\frac{1}{2}$ qtrs.
"	Locust Beans	3 tons, 12 $\frac{1}{2}$ cwts.
"	Beans	8 qtrs.
"	Rice	2 tons, 18 cwts.
"	Canary Seed	19 $\frac{1}{2}$ qtrs.
"	Hemp Seed	14 qtrs.
"	Millet	4 qtrs.
"	Millet Spray	38 bunches.
"	Sunflower-seed	18 qtrs.
Fish	Herrings and Whiting ...	57 tons, 11 $\frac{1}{4}$ cwts.
"	Shrimps	28 bushels.
Flesh	Horse-flesh	249 tons, 9 cwts.
"	Beef	6 $\frac{1}{4}$ cwts.
"	Fat	1 ton, 12 $\frac{1}{2}$ cwts.
Milk	Condensed—Sweetened ...	8,640 lbs.
"	" Unsweetened	3,168 lbs. and 48 gals.
"	Special	1,798 $\frac{3}{4}$ gals.
Nuts	Spanish	104 qtrs.
"	Monkey	9 tons, 10 cwts.
"	Brazil	104 lbs.
"	Mixed	134 lbs.
Fruit, etc.	Bananas	246,707.
"	Apples	12 tons, 9 cwts.
"	Grapes	4 tons, 18 $\frac{3}{4}$ cwts.
"	Oranges	24,994.
"	Dates	1 ton, 5 cwts., 67 lbs.
"	Currants	12 cwts., 46 lbs.
"	Sultanas	52 lbs.
"	Pears	3 $\frac{3}{4}$ cwts.

Class.	Description.	Number or Quantity.
Fruit, etc.	Pineapple	14.
"	Figs	8 lbs.
"	Lemons	188.
"	Rhubarb	128 bundles.
"	Lettuce	42,410
"	Greens	1,895½ bushels and 1,673
"	Cabbages	713. [lbs.
"	Carrots	10 tons, 15¾ cwts. and
"	Tomatoes	8½ cwts. [913 bunches.
"	Potatoes	26 tons, 14¼ cwts.
"	Onions	7 cwts.
"	Mangolds	44 tons, 9¼ cwts.
"	Beetroot	14 roots.
"	Celery	1,563 heads.
"	Cucumbers	56.
Miscellaneous	Biscuits	28 tons, 3 cwts.
"	Biscuit Meal	12 tons, 16 cwts.
"	Honey	5½ cwts.
"	Mellin's Food	51 pots.
"	Bread	11 tons, 3 cwts., 24 lbs.
"	Sponge Cakes	364.
"	Eggs	31,048.
"	Sugar	24 cwts.
"	Ant-eggs	4 cwts.
"	Mealworms	6¼ cwts.
"	Dried Flies	4 cwts., 10 lbs.
"	Egg Yolk	94 lbs.
"	Golden Syrup	154 lbs.
"	Jam	433 lbs.
"	Prunes	204 lbs.
"	Oilcake	1 ton, 10 cwts.
"	Butter	39 lbs.
"	Margarine	5 cwts.

69. NUMBERS OF THE COLLECTION.

Animals in Regent's Park Gardens on December 31st, 1937.

Animals of all kinds (except Fish and Invertebrates) on January 1st, 1937	3,867
Animals of all kinds (except Fish and Invertebrates) received in 1937 by presentation, exchange, deposit, purchase or birth	2,655
	<hr/>
	6,522
Animals of all kinds (except Fish and Invertebrates) dead, sold, sent in exchange, or returned to depositors in 1937	2,721
Animals of all kinds (except Fish and Invertebrates) in the Gardens on December 31st, 1937	<hr/> <hr/> 3,801

Additions to the Collection, 1935-37.

	Presentation.	Purchase.	Deposit.	Exchange.	Birth.	TOTAL.
1935 ...	1,258	517	46	89	240	2,150
1936 ...	1,517	551	126	239	218	2,651
1937 ...	1,158	538	261	365	333	2,655

70. MAMMALS, BIRDS, REPTILES, AND FISHES BRED IN THE LONDON GARDENS, 1937.—873 animals were bred in the Gardens in 1937 as compared with 224 in 1936. It should be noted that most, but not all of the increase for 1937 is due to the inclusion of fish for the first time.

	1937.	1936.
Mammals	131	116
Birds	59	73
Reptiles	142	35
Fish	541	—
	<hr/>	<hr/>
	873	224
	<hr/> <hr/>	<hr/> <hr/>

R = reared to maturity. D = died. L = living.

Mammals.

2 Chimpanzees (*Pan satyrus*), L.

1 Hybrid Sooty × White-crowned Mangabey (*Cercocebus fuliginosus* × *C. torquatus*), D.

1 Toque Monkey (*Macaca sinica*), D.

- 1 Guinea Baboon (*Papio papio*), R.
 2 Brown Lemurs (*Lemur fulvus*), D.
 2 Moholi Bush Babies (*Galago moholi*), R.
 2 Indian Fruit Bats (*Pteropus giganteus*), L.
 9 Lion cubs (*Felis leo*), 7 R, 2 D.
 6 Leopard cubs (*Felis pardus*), D.
 2 Jaguars (*Felis onca*), D.
 1 Northern Lynx (*Felis lynx*), D.
 4 Coyotes (*Canis latrans*), 2 R, 2 D.
 3 Silver Foxes (*Vulpes fulva*), 2 R, 1 D.
 12 Golden Hamsters (*Cricetus auratus*), R.
 4 Western Coucha Rats (*Mastomys erythroleucus*), R.
 1 Tullberg's Rat (*Praomys tullbergi*), R.
 3 Long-tailed Field Mice (*Apodemus sylvaticus*), 2 R, 1 D.
 3 Golden Agoutis (*Dasyprocta aguti*), R.
 2 Hairy-rumped Agoutis (*Dasyprocta prymnolopha*), L.
 5 Patagonian Cavies (*Dolichotis magellanica*), 3 R, 2 D.
 1 Grévy's Zebra (*Equus grevyi*), L.
 1 Hybrid Mountain \times Hartmann's Mountain Zebra (*Equus zebra* \times *E. z. hartmanni*), D.
 1 Brazilian Tapir (*Tapirus terrestris*), R.
 1 Yak (*Poephagus grunniens*), R.
 1 American Bison (*Bison bison*), R.
 1 Big Horned Sheep (*Ovis canadensis*), D.
 4 Mouflon (*Ovis musimon*), 3 R, 1 D.
 4 Hybrid Punjab \times Cyprian Wild Sheep (*Ovis vignei* \times *O. ophion*), 1 R, 3 D.
 7 Barbary Wild Sheep (*Ammotragus lervia*), 4 R, 3 D.
 4 Common Goats (*Capra hircus*), R.
 2 Grecian Wild Goats (*Capra aegagrus*), R.
 2 Caucasian Wild Goats (*Capra caucasica*), R.
 1 Asiatic Ibex (*Capra sibirica*), D.
 3 Thar (*Hemitragus jemlahicus*), 2 R, 1 D.
 1 Brindled Gnu (*Connochaetes taurinus*), L.
 1 Crowned Duiker (*Cephalophus grimmi coronatus*), R.
 5 Blackbuck (*Antilope cervicapra*), 4 R, 1 D.
 1 Chinkara (*Gazella bennettii*), L.
 3 Harnessed Antelopes (*Tragelaphus scriptus*), 2 R, 1 D.
 1 Hybrid East African \times West African Marshbuck (*Tragelaphus spekii* \times *T. gratus*), R.
 1 Eland (*Taurotragus oryx*), R.
 1 Nylghaie (*Boselaphus tragocamelus*), D.
 2 Reeve's Muntjacs (*Muntiacus reevesi*), R.
 3 Hog Deer (*Hyelaphus porcinus*), 1 R, 2 D.

- 2 Hangul Deer (*Cervus hanglu*), R.
- 1 Reindeer (*Rangifer tarandus*), R.
- 2 Llamas (*Lama glama*), D.
- 1 Babirusa (*Babirussa babyrussa*), R.
- 2 Collared Peccaries (*Pecari tajacu*), L.
- 2 Black Wallabies (*Macropus ualabatus*), 1 R, 1 D.
- 1 Bennett's Wallaby (*Macropus ruficollis bennetti*), R.
- 2 Short-headed Flying Opossums (*Petaurus breviceps*), D.

Birds.

- 1 Illiger's Macaw (*Ara maracana*), L.
- 3 Hybrid Masked × Fischer's Lovebirds (*Agapornis personata* × *A. fischeri*), R.
- 5 Budgerigars (*Melopsittacus undulatus*), R (Cobalt var.).
- 2 " " " " (Yellow var.).
- 2 " " " " (Olive var.).
- 4 " " " " (White var.).
- 9 " " " " (Green).
- 10 Cockatiels (*Leptolophus hollandicus*), R.
- 2 Carolina Ducks (*Aix sponsa*), R.
- 1 White-fronted Sheld Duck (*Casarca cana*), R.
- 2 Mallard (*Anas platyrhynchos*), R.
- 5 Japanese Spot-billed Ducks (*Anas zonorhyncha*), 2 R, 3 D.
- 1 Yellow-billed Duck (*Anas undulata*), R.
- 2 Chiloe Wigeon (*Anas sibilatrix*), R.
- 3 Red-crested Pochard (*Netta rufina*), 1 R, 2 D.
- 1 African Sacred Ibis (*Threskiornis aethiopicus*), D.
- 1 Stanley Crane (*Tetrapteryx paradisea*), R.
- 1 Silver Gull (*Larus novae-hollandiae*), R.
- 2 Black-backed Gulls (*Larus marinus*), R.
- 1 Crimson Horned Pheasant (*Tragopan satyra*), D.
- 1 Hybrid Common × Burmese Peafowl (*Pavo cristatus* × *P. muticus*), R.

Reptiles.

- 2 Iguanas (*Iguana iguana*), D.
- 5 Northern Blue-tongued Lizards (*Tiliqua scincoides*), D.
- 8 Common Boas (*Constrictor constrictor*), R.
- 46 Green Water Snakes (*Natrix cyclopion*), R.
- 2 King Snakes (*Lampropeltis getulus*), D.
- 71 Russell's Vipers (*Vipera russelli*), D.
- 4 Gaboon Vipers (*Bitis gabonica*), D.
- 4 Water Moccasins (*Agkistrodon piscivorus*), 2 R, 2 D.

Fishes.

- 50 Red Cichlids (*Hemichromis bimaculatus*), R.
 80 Haug's Cichlids (*Tilapia haugi*), R.
 24 Mouthbreeders (*Haplochromis strigigena*), R.
 6 Angel Fish (*Pterophyllum scalare*), R.
 30 Fighting Fish (*Betta splendens*), R.
 15 Paradise Fish (*Macropodus viridi-auratus*), R.
 20 Blotched Cyprinodont (*Platypoecilus maculatus*), R.
 12 Red-tinged Cyprinodont (*Panchax lineatus*), R.
 18 Sail-finned Fish (*Mollienisia velifera*), R.
 250 Millions Fish (*Lebistes reticulatus*), R.
 30 Swordtail Fish (*Xiphophorus helleri*), R.
 6 Large Zebra Fish (*Danio malabaricus*), R.

71. LIST OF SPECIES NEW TO THE COLLECTION IN 1937.—67 new species were added to the collection in the year as compared with 79 in 1936 :—

	1937.	1936.
Mammals	9	21
Birds	26	29
Reptiles	3	16
Amphibians	—	3
Fishes	29	10
	—	—
	67	79
	==	==

(The figures placed before each name indicate its approximate position in the New Vertebrate List.)

(I) MAMMALS.

- 151b. *Loris tardigradus nordicus* Hill. Northern Ceylonese Slender Loris.
Ceylon.
 199b. *Vampirus spectrum* Linn. Giant Bat.
Trinidad.
 474a. *Eliomys numbianus* Pomel. North African Dormouse.
Morocco.
 500a. *Mus musculus faroensis* Eagle Clarke. Faroe Island Mouse.
Faroe Is.
 508b. *Praomys tullbergi* Thos. Tullberg's Rat.
Gold Coast, West Africa.

- 519c. *Lophuromys sikapusi* Temm. Sikapus's Mouse.
Gold Coast, West Africa.
- 549a. *Microtus guentheri* (Danfort & Alston). Guenther's Vole.
Palestine.
- 580a. *Echimys armatus* (Geoffroy). Soldier Rat.
Dutch Guiana.
- 701a. *Cephalophus niger* Gray. Black Duiker.
Gold Coast, West Africa.

(II) BIRDS.

- 18d. *Pica nuttalli* (Audubon). Californian Yellow-billed Magpie.
California.
- 21a. *Urocissa caerulea* (Gould). Formosan Blue Pie.
Formosa.
- 61a. *Macgregoria pulchra* De Vis. Orange-wattled Bird of Paradise.
S.W. New Guinea.
- 67c. *Parotia lawesi helenae* De Vis. Helena's Six-plumed Bird of Paradise.
S.W. New Guinea.
- 70a. *Amblyornis inornatus* (Schl.). Greater-crested Gardener Bower
Bird.
S.E. New Guinea.
- 72a. *Chlamydera cerviventris* Gould. Fawn-breasted Bower Bird.
N.E. New Guinea.
- 135a. *Molothrus ater obscurus* (Gmelin). Dwarf Cowbird.
California.
- 227a. *Munia castaneothorax nigriceps* (Ramsay). New Guinea Chestnut-
breasted Finch.
S.E. New Guinea.
- 227b. *Munia caniceps caniceps* Salvadori. Straw-tailed Munia.
S.E. New Guinea.
- 244a. *Erythrura viridifacies* Hachisuka & Delacour. Philippine Parrot
Finch.
Luzon, Philippines.
- 302a. *Tangara paradisea* (Swains.). Paradise Tanager.
Central America.
- 378a. *Oryzoborus angolensis brevirostris* Beebe. Short-billed Seed Finch.
Dutch Guiana.
- 524a. *Melospiza lincolni* (Audub.). Lincoln's Sparrow.
North America.

- 536a. *Pipilo maculatus falcinellus* Swarth. Sacramento Towhee.
California.
- 598a. *Melidectes torquata* Sclater. Ring-necked Honey-Eater.
N.E. New Guinea.
- 623b. *Cinnyris leucogaster* Vieill. White-breasted Sunbird.
S. Africa.
- 623c. *Cinnyris coccinigaster* Vieill. Splendid Sunbird.
Gold Coast, W. Africa.
- 625b. *Chalcomitra adelberti adelberti* (Gervais). Buff-throated Sunbird.
Gold Coast, W. Africa.
- 684a. *Artamus maximus* Meyer. New Guinea Wood Swallow.
Mountains of New Guinea.
- 706b. *Cossyphopsis reevei* (Lawr.). Reeve's Thrush.
Ecuador.
- 720a. *Turdus migratorius propinquus* Ridgeway. Western Robin.
California.
- 780a. *Sialia mexicana occidentalis* Townsend. Western Bluebird.
California.
- 780b. *Sialia currucoides* (Bechstein). Mountain Bluebird.
California.
- 977a. *Pharomacrus mocinno* De La Llave. Resplendent Trogon.
Guatemala.
- 1437c. *Gypaëtus barbatus altaicus* Sharpe. Asiatic Lammergeyer.
Khirghiz, C. Asia.
- 1512a. *Falco sparverius phalaena* (Lesson). Desert Kestrel.
California.

(III) REPTILES.

- 164a. *Teratoscincus scincus* Schleg. Turkestan Gecko.
Turkestan.
- 179a. *Hemidactylus bocagii* (Bocage). West African Gecko.
St. Helena.
- 252a. *Phrynosoma platyrhinos* (Girard). Western Horned Lizard.
Utah, U.S.A.

(IV) FISHES.

- 11b. *Taeniura lymma* (Forsk.) Blue-spotted Sting Ray.
Red Sea.
- 14a. *Polypterus lapradii* Steindachner. Sail-finned Fish.
Gambia.

- 17a. *Marcusenius longianalis* Boulenger. Niger Mormyr.
West Africa.
- 17b. *Isichthys henryi* Gill. Henry's Mormyr.
West Africa.
- 45a. *Chilodus punctatus* Mueller & Troschel. Head-standing Fish.
Guiana.
- 94a. *Gymnothorax funebris* Ranzani. Green Moray.
Florida.
- 145a. *Serranus scriba* (Linnaeus). Mediterranean Sea Perch.
Mediterranean.
- 146a. *Anisotremus virginicus* (Linnaeus). Pork Fish.
Florida.
- 148a. *Epinephelus aeneus* (Geoffroy). Bronzy Sea Perch.
Mediterranean.
- 148b. *Epinephelus sexmaculatus* (Rüppell). Mottled Sea Perch.
Gulf of Suez.
- 151a. *Sciaenops ocellatus* (Linnaeus). Channel Sea Bass.
Florida.
- 151b. *Menticirrhus saxatilis* (Block & Schneider). Kingfish.
Florida.
- 164a. *Elagatis bipinnulatus* (Quoy & Gaimard). Runner.
Florida.
- 164b. *Naucrates ductor* (Linnaeus). Pilot Fish.
Florida.
- 169a. *Stenotomus chrysops* (Linnaeus). Porgy.
Florida.
- 189a. *Tilapia haugi* Pellegrin. Haug's Cichlid.
West Africa.
- 189b. *Pelmatochromis arnoldi* Boulenger. Arnold's Cichlid.
West Africa.
- 189c. *Pelmatochromis buettikoferi* (Steindachner). Buettikofer's Cichlid.
West Africa.
- 197b. *Dascyllus marginatus* (Rüppell). Opalesque Coral Fish.
Red Sea.
- 212a. *Thalassoma lunare* (Linnaeus). Eastern Swallow-tailed Wrasse.
Gulf of Suez.
- 219a. *Chelma rostratus* (Cuvier). Long-nosed Coral Fish.
East Indies.
- 219b. *Chaetodontoplus mesoleucus* (Block). Penguin Fish.
East Indies.

- 219c. *Pomacanthus arcuatus* (Linnaeus). Black Angel Fish.
Florida.
- 237a. *Remora remora* (Linnaeus). Shark-sucker.
Florida.
- 251a. *Prionotus tribulus* (Cuvier). Sea Robin.
Florida.
- 272a. *Chilomycterus schoepfi* (Walbaum). Spiny Box Fish.
Florida.
- 274c. *Ostracion tetragonus* Linnaeus. Speckled Trunk Fish.
East Indian Seas.
- 274d. *Ceratacanthus monoceros* (Osbeck). File Fish.
Florida.
- 275b. *Mastacembelus loennbergii* Boulenger. Loennberg's Long-snouted
Fish.
West Africa.

72. ACKNOWLEDGMENTS.—The Society is as usual much indebted to Fellows, Corresponding Members, Private Donors, and to Institutions, Societies and Shipping Companies for their most kind help in maintaining the collection of animals by gifts and by assistance in transport. Specially to be mentioned in respect of 1937 are H.M. King Ibn Saud of Arabia, Mr. Alfred Ezra, F.Z.S., the late Mr. Eric C. Johnson, C.M.Z.S., Mr. G. C. Upstone, C.M.Z.S., Mr. J. J. Morris, C.M.Z.S., the Bombay Natural History Society, the Zoological Gardens of Calcutta, Messrs. Alfred Holt & Co., Monsieur Jean Delacour, Mr. L. J. R. Hawkey, Pacific Steam Navigation Co., The Blue Star Line, the P. & O. Steamship Co., the Union-Castle Steamship Co., and the British India Steam Navigation Co., through Messrs. Gray, Dawes & Co., and Messrs. Mackinnon, Mackenzie & Co.

73. LIST OF DONORS TO LONDON GARDENS.

* = New to Collection.

- ANNALY, Lady, 2 Orange-cheeked Waxbills.
- ARABIA, H.M. King Ibn Saud of, 4 Arabian Camels.
- " AVELONA STAR," 2nd Officer of, 1 Cainana Rat Snake.
- AYLING, Miss Betty, 1 Spotted Salamander.
- BAHAWALPUR, H.H. The Nawab Sahib Bahadur of, G.C.I.E., K.C.S.I.,
K.C.V.O., F.Z.S., 1 Musk Deer.
- BAHR, Dr. P. H. Manson, C.M.G., D.S.O., F.Z.S., 2 Yellow Sparrows.
- BALDWIN, Prof. Ernest, Electric Catfish.

- BARNES, Mrs., 1 Budgerigar (White var.).
 BARNETT, Dr. Burgess, F.Z.S., 1 Indian Cobra.
 BECKETT, Mrs. E., 1 African Grey Parrot.
 BEDFORD, H.G. The Duke of, K.G., F.R.S., Golden Trout.
 BELL, E., 1 Crested Grebe.
 BELSSER, F., 2 Flap-necked Chameleons.
 BENNETT, A. G., C.M.Z.S., 4 Forster's Milvagoes, 3 Falkland Island Turkey-Vultures, 2 Red-backed Buzzards.
 BENNETT, Miss H., 1 Greek Tortoise.
 BERKELEY, Capt. R. G. W., F.Z.S., 2 Reeves' Pheasants, 1 Pallas's Eared Pheasant.
 BIGGS, E. A., 1 Dormouse.
 BIRKIN, Mrs. R., Goldfish.
 BIRRELL, Miss J., 1 Pied Barbet.
 BISSETT, C. Haydon, 1 Lar Gibbon.
 BLACKMORE, Michael, 3 Greater Horseshoe Bats.
 BLAXILL, Dr. B., 1 Little Owl.
 BLIAULT, E. C. A., 1 Common Pheasant.
 BODENHEIMER, Prof., *4 Guenther's Voles, 2 Cairo Spiny Mice.
 BONDEN, Miss, 1 European Pond Tortoise.
 BORRADAILE, O. H., 1 Spotted Mongoose.
 BOUCHAIN, D. P., 2 Common European Toads.
 BOURKE, The Hon. Mrs. G., *1 White-breasted Sunbird.
 BOWDEN, J., 1 Spotted Salamander.
 BRAID, Andrew, 2 Ravens.
 BRIGHT, H., *Haug's Cichlid.
 BROMLEY, B., 1 Greek Tortoise.
 BROOM, Dr. Robert, M.D., D.Sc., F.R.S., C.M.Z.S., *1 Western Horned Lizard.
 BROWN, R. R., 1 Delalande's Gecko.
 BROWN, Mrs. S. G., F.Z.S., 6 Melba Finches, 2 Black-headed Siskins, 1 Bluish Finch, 2 Red-crested Cardinals, 1 Green Cardinal, 1 Java Sparrow, 2 Yellowish Weaver Birds, 1 Black & Red Warbling Finch, Angel Fish, Goldfish.
 BROWN, Mrs. W. G., 1 Razorbill.
 BUSH, A. J., F.Z.S., 3 Japanese Newts.
 BYRES, Miss Moir-, 1 Two-spotted Palm Civet.
 CAMPBELL, Donald, 1 Indian Wolf.
 CAPES, H., 1 Common Peafowl.
 CARTER, Mrs., F.Z.S., 25 Madeira Wall Lizards.
 CHAPLIN, The Hon. Anthony, F.Z.S., 1 Guatemalan Thrush, 1 Cananina Snake, 1 Boddaert's Snake, 1 Pike-head Snake, 1 Cobella Snake, 1 Delalande's Gecko, 1 Agile Frog, 2 Yellow-bellied Toads, 1 European Whip Snake, Tropical Fish.
 CHAPMAN, Mrs., 2 Budgerigars, 2 Budgerigars (Blue var.).

- CLAYTON, Miss R. A., 1 Greek Tortoise.
 CLOGG, G., 1 Barn Owl.
 COBBETT, Executors of the late W. W., 1 Yellow-thighed Caique.
 COLLINGS, C., Goldfish.
 COLOMBO Museum, 1 Mugger.
 COLQUHOUN, J. C., 1 Dingo.
 COLVIN, J. A., 1 Mink.
 CRANFIELD, L. W., 1 Harvest Mouse.
 CROUCH, C. S., 1 Lavender Finch, 4 Zebra Finches, 2 Common Waxbills,
 2 Indian Silverbills.
 CUBITT, Mrs., 1 African Grey Parrot.
 DALL, Miss Edith, 1 Stoat.
 DAMPNEY, Miss J. L., 1 Crimson-eared Waxbill.
 DARRAST, d'Abddie, 1 Lamb.
 DAVIES, Miss, 1 Moholi Bush Baby.
 DAVIS, D. H. S., F.Z.S., 1 African Brush-tailed Porcupine, 2 Giant Rats,
 1 African Civet Cat, 1 Two-spotted Palm Civet, 3 Kusimanse.
 DELACOUR, J., F.Z.S., *1 Philippine Parrot-Finch, 1 Pine Siskin, *3 Western
 Bluebirds, *1 Mountain Bluebird, *1 Desert Kestrel, *2 Dwarf Cow-
 birds, 1 Black-headed Grosbeak, *1 Californian Yellow-billed Magpie,
 1 Steller's Jay, *2 Western Robins, *1 Sacramento Towhee, 1 Yellow-
 checked Parrot.
 DERSCHIED, Dr. J. M., F.Z.S., 2 Bearded Titmice, 1 Little Bittern.
 DODS, W. K., C.M.Z.S., 1 Indian Hare, 24 Cattle Egrets, 4 Brahminy Kites,
 2 White-eyed Buzzards.
 DOWER, K. C. Gandar, F.Z.S., 1 African Bush Pig, 2 Blotched Genets
 (1 Black var.).
 DRAKE, Mrs. K., 2 Hybrid White-Eyes \times Yellow-fronted White-Eyes.
 DUGUID, Julian, 1 Puma.
 DUNCAN, P., 1 Rough-scaled Girdled Lizard.
 DUNHILL, Mrs. H., 1 Delalande's Gecko.
 DUQUENOY, M., 1 Marsh Mongoose.
 DURUZ, Mrs., 1 Malay Shama.
 EALES, W. F., 1 Eyed Lizard.
 EAST, Miss, 7 European Tree Frogs.
 EVANS, Mrs. J., 1 Nepal Hill Myna.
 EVANS, S., 1 Jay.
 EYRE, Miss, 2 Superb Glossy Starlings.
 EZRA, Alfred, O.B.E., F.Z.S., 2 Reeves's Muntjac, *2 Formosan Blue Pies,
 4 Derbian Parrakeets, 2 Musk Lorikeets, 4 Scaly-breasted Lorikeets,
 2 Swainson's Lorikeets, 2 Indian Elephants, 12 Ruffs, 9 Reeves,
 2 Egyptian Plovers.
 FAIRBANK, C. F. S., 1 Puffin.
 FALKENSTEIN, A. J. (in conjunction with Capt. G. A. C. Rosselloty), 1
 Slender-billed Cockatoo.

- FARADAY, P. Michael, 1 Plain-coloured Parrot.
- FAROE ISLAND BIOLOGICAL EXPEDITION 1937, *8 Faroe Island Mice.
- FASHAM, N., 1 Scarlet Tanager.
- FINDLAY, Dr. G. M., 3 Lesser Egyptian Gerbils.
- FIRMINGER, Mrs. M. M., 3 Orange Weaver Birds, 1 Shining Weaver Bird.
- FISHER, Dr. R. A., F.R.S., 1 Silver Grey Opossum.
- FREIMULLER, C., 1 Stump-tailed Skink.
- FROST, W. J. C., 1 Japanese Blue & White Flycatcher, 1 Sumatran Peacock Pheasant.
- FRY, Mrs., 1 Marmoset.
- FUERST, G. M., F.Z.S., 12 Warty Chameleons.
- GAUNT, Admiral Sir Guy, K.C.M.G., C.B., F.Z.S., *3 North African Dormice.
- GAYFORD, Mrs., 1 Dormouse.
- GEOGHEGAN, Mrs. F., F.Z.S., 1 Crimson-crowned Weaver Bird, 3 Red-beaked Weaver Birds, 2 Three-coloured Mannakins, 1 Chaffinch.
- GIBBINGS, Miss J. M., 6 Spectacled Cayman.
- GIBSON, G. T., 2 Common Vipers.
- GILLET, D., 1 Calabar Ground Python.
- GIRVAN, Matthew, 2 Common Goats.
- GOLDSTON, Mrs., 1 Alligator, 3 Ornate Terrapins.
- GOORD, Miss M., 1 Green-cheeked Parrot.
- GOSSE, Dr. Philip, F.Z.S., 36 Gray's Frogs & Tadpoles, *1 West African Gecko.
- GOUDGE, Mrs. Bernard, 1 Garden Warbler.
- GREGORY, Cyril, 1 Paradise Whydah Bird.
- GUNNER, A., 4 Common Vipers.
- HACKER, Mrs. H. S., B.Sc., F.Z.S., 6 Harvest Mice.
- HALL, Mrs. F. W., 2 Kookaburras, 2 White-backed Piping Crows.
- HALL, T. G., 1 Budgerigar (Blue var.), 1 Budgerigar (Cobalt var.).
- HARJES, John, 2 European Badgers.
- HARRIS, C. A., 1 Green Lizard.
- HARRISON, A. J., Anemones.
- HARRISON, Prof. R. G., F.M.Z.S., 12 Japanese Newts, 2 Tiger Salamanders.
- HAWES, E. F., 1 Green Lizard.
- HAWKEY, L. J. R., 1 Red Brocket, 1 Collared Peccary, 3 Golden Agoutis, 1 Spotted Cavy, *1 Soldier Rat, 1 Banded Aracari, 3 Violet Tanagers, 3 Palm Tanagers, 1 Rusty Dove, 1 Pale Cowbird, 1 Red-billed Tree Duck, 3 Cayenne Rails, 1 Grant's Guan, 4 Lineated Finches, 2 Grey Seed Eaters, *3 Short-billed Seed Finches, 1 Thick-billed Seed Finch, 1 Violet-tailed Humming Bird, 1 Jacobin Humming Bird, 1 White-bellied Emerald Humming Bird, 3 Brazilian Tortoises, 1 Rough Terrapin, 2 Flat-headed Terrapins.
- HENDERSON, Turner, F.Z.S., 1 Shag.
- HIBBERD, G. F. A., Axolotls.
- HIGHMAN, Miss P., 1 Marmoset.

- HILL, Mrs., 2 Blackbirds.
 HILL, Mrs. T. C., 1 Chameleon.
 HOPKINS, T. F. G. & Mrs., 1 Chimpanzee.
 HORSCROFT, Mrs. D. M., 1 Persian Spotted Mongoose.
 HORWOOD, F., 2 Slowworms.
 HOTHAM, Miss A., 1 Grey Mongoose.
 HOWARD DE WALDEN, Lord, F.Z.S., 1 Iceland Falcon.
 HUBBARD, H. Malcolm, 1 Shetland Pony.
 HUDSON, Dr. J. S., 1 Hawk-billed Turtle, 1 Snowy Egret, 1 Grey-breasted
 Helmet Guinea-fowl, 3 Green Turtles.
 HUMPHREYS, G. H., 1 Rough Terrapin.
 INNOCENT, H. F., 1 Chameleon.
 JACKSON, Lady, 18 Budgerigars.
 JERMYN, L. A. S., 9 Estuarine Crocodiles.
 JERVIS, The Hon. Mrs. St. Leger, *1 Black & Crimson Oriole, 2 Silky Cow-
 birds.
 JOHNSON, the late Eric, C.M.Z.S., 15 Bosc's Monitors, 1 Nile Monitor, 3
 Senegal Chameleons, 47 Land Crabs, 1 African Python, 1 Royal
 Python, 1 Puff Adder.
 JOHNSON, Mrs. Eve Moore-, 2 Budgerigars, 1 Budgerigar (White var.),
 1 Budgerigar (Blue var.).
 JOHNSON, Walter, 1 Cainana Rat Snake.
 JOHNSTON, F. J., 1 Kestrel.
 JONES, Leon, F.Z.S., 3 Leer's Gurami, 1 Pekin Robin.
 KEKWICK, Capt. H. A., 2 Chameleons.
 KEMP, Midshipman, 1 Chameleon.
 KEMP, S. A., F.Z.S., 2 Common Guillemots.
 KINGDON, Sir Donald, 1 Tawny Eagle, 1 Short-toed Eagle, 2 Stone Par-
 tridges, 1 Senegal Chameleon, Electric Catfish, Senegal Catfish.
 LANKESTER, C. H., 2 Brazilian Tortoises.
 LEADER, B. J., 1 Common Viper.
 LEWIS, J. Spedan, F.Z.S., 3 African Sacred Ibis, 2 White-fronted Sheld-
 Duck.
 LINDSAY, W. H., F.Z.S., 1 Little Owl.
 LLOYD, Mrs. A., 1 Lesser Vasa Parrot, 1 African Grey Parrot.
 LOCKLEY, R. M., 2 Common Buzzards.
 LOECK, Miss Inge, 1 Greek Tortoise.
 McALPINE, Miss J., 1 Chameleon.
 McCANN, C., 1 Hoolock Gibbon.
 McCLURE, Mrs., 3 Red-crested Cardinals.
 MACDONOGH, Lt.-Genl. Sir George M. W., G.B.E., K.C.B., K.C.M.G.,
 F.Z.S., *2 Giant Bats, 2 Giant Centipedes.
 MACKENZIE, Lady Isobel Blunt-, 4 Spectacled Cayman.
 MALLINSON, D., 1 Java Sparrow.
 MARSH, E., 10 Budgerigars, 3 Budgerigars (Blue var.).

- MARSHALL, Major H. S., F.Z.S., 2 Barbary Turtle Doves.
- MARTIN, F., 1 Budgerigar.
- MAYER, F. Shaw, F.Z.S., *2 New Guinea Chestnut-breasted Finches, *2 Straw-tailed Munias, *1 Greater-crested Gardener Bower Bird, 1 Green-winged King Parrakeet.
- MELLOR, J., 1 Peregrine Falcon, 1 Snowy Owl, 1 Merlin.
- MILLER, A., 1 Black-necked Cobra, 1 Puff Adder.
- MINCHIN, A. F., 1 Indian Python.
- MITFORD, Capt. the Hon. John, 2 Ravens.
- MOORE, A. J., F.Z.S., 3 Indian Fruit Bats, 1 Fox, 1 Mexican Conure.
- MOORE, Miss Frances, 1 Java Sparrow.
- MORGAN, A. Bethune, F.R.A.I., F.Z.S., 1 Greater Flamingo.
- MORRIS, J. J., C.M.Z.S., 1 Horned Escuerzo, 15 Delalande's Geckos, 28 South American Sand Toads, 1 Marmoset, 1 Canarian Hedgehog, Turtles, Sea Urchins.
- MOSCOW ZOOPARK, 4 Karagan Foxes, *2 Turkestan Geckos.
- NEW YORK AQUARIUM, King Crabs, Garpike, Bowfins, Menopomas and collections of fishes from the coast of Florida (many new to the collection).
- NICHOLLS, A. J., 1 Flap-necked Chameleon.
- NICHOLLS, Dr. L., 2 Highland Slender Loris, 1 Slender Loris, *1 Northern Ceylonese Slender Loris.
- NICHOLSON, Major G., 1 Brown Capuchin Monkey.
- NORRIS, K. A., 2 Layard's Parrakeets.
- NORSWORTHY, H., 1 Budgerigar (Blue var.).
- NORTHCOTE, Sir Geoffry, K.C.M.G., 1 Dusky Parrot.
- OAK, H., 1 Pygmy Chameleon.
- OSBORNE, L., 1 Black-headed Gull.
- OSBORNE, W. L., 2 Chameleons.
- PACIFIC STEAM NAVIGATION Co., 1 Jaguar.
- PADDICK, W., Golden Orfe.
- PAGE, L. V., F.Z.S., 1 Long-tailed Manakin.
- PARKER, Oliver, 3 Gallot's Lizards.
- PARTRIDGE, Mrs. Kathleen, 1 White-browed Parrot.
- PARTRIDGE, W. R., 2 Stubble Quail, 2 White-bearded Honey Eaters.
- PATTERSON, Mrs. E. L., 1 Crimson-eared Waxbill.
- PATTERSON, R., 1 Black Salamander, 1 Alpine Newt.
- PELLOWE, R. C. & Mrs., 2 Royal Antelopes, 1 Bay Duiker, *1 Black Duiker.
- PERRY, H., 1 Little Owl.
- PEZET, Miss I. L. V., 1 Cockatiel.
- PONSONBY, Bequest of the late C. G. Talbot, F.Z.S., 1 Crossbill, 1 Red-breasted Cardinal, 2 Chestnut-breasted Finches, 1 Cut-throat Finch, 1 Orange-cheeked Waxbill, 8 Bullfinches, 2 Goldfinches, 3 Bramblings, 2 Greenfinches, 1 Linnet, 1 Corn Bunting, 1 Nutmeg Finch, 1 Yellow Bunting, 2 Tree Sparrows, 1 Rufous-necked Weaver Bird, 1 Lesser

- Redpoll, 2 Mealy Redpolls, 1 Twite, 2 Saffron Finches, 2 Orange Weaver Birds, 3 Siskins, 2 Serins, 2 Gouldian Finches, 2 Japanese Hawfinches, 1 Hawfinch, 2 Partridges, 1 Red-legged Partridge, 1 Californian Quail, 2 American Wigeon, 2 Falcated Teal, 2 Garganey Teal, 2 Gadwall, 2 Carolina Ducks, 1 Rosy-billed Duck, 1 Cinnamon Teal, 1 Blue-winged Teal, 1 Grey-headed Gallinule, 2 Tufted Ducks, 1 Pintail, 4 Budgerigars, 2 North American Turkeys, 2 Common Peafowl, 1 Black-winged Peafowl, 2 Chinese Silver Pheasants, 1 Burmese Silver Pheasant, 2 Vieillot's Fire-backed Pheasants, 2 Peacock Pheasants, 2 Siamese Fire-backed Pheasants, 2 Manchurian Eared Pheasants, 2 Impeyan Pheasants, 1 Elliott's Pheasant, 1 Hybrid Lady Amherst \times Golden Pheasant, 4 Mongolian Pheasants, 2 Muscovy Ducks, 26 Mallard, 10 Grey-breasted Helmet Guineafowl, 11 Domestic Pigeons.
- PORTAL, Maurice, D.S.O., F.Z.S., 7 Harvest Mice, 2 De Winton's Mice.
- PRICE, J. S., 2 Zebra Finches, 1 Orange-cheeked Waxbill, 1 Common Waxbill, 2 Budgerigars (Blue var.).
- PRIOR, The Rev. Kenneth, 1 Schmidt's White-nosed Monkey.
- PROUT, W. J., Fighting Fish.
- PYE, N., 1 Kestrel.
- QUINCEY, R. S. De Quincey, F.Z.S., 1 Plumbeous Redstart.
- RANKIN, Lady Jean, 2 Ravens.
- RAWLINGS, P., 2 Lord Derby's Zonures, 2 European Pond Tortoises, 1 Spanish Terrapin, 1 Reeve's Terrapin, 1 Ornate Terrapin, 2 Edible Frogs, 2 Green Toads, 2 Laurenti's Three-toed Sand Skinks, 2 Wall Lizards, 1 Sand Lizard.
- RENNIE, Miss, 1 Festive Tanager.
- REVILLE, F. W., 3 Budgerigars, 2 Budgerigars (Olive var.), 1 Budgerigar (Cobalt var.).
- RIBEIRO, Dr. Alipio de Miranda, C.M.Z.S., 2 Capybaras.
- RICHARDS, G., Crawfish, Blue Lobster.
- ROBINSON, Mrs. Irene, 1 Budgerigar, 1 Budgerigar (White var.).
- ROSE, H. G., F.Z.S., 2 Crested Newts.
- ROSSELLOTY, Capt. G. A. C. (in conjunction with A. J. Falkenstein), 1 Slender-billed Cockatoo.
- RÖTCHELL, Ernest, 1 Spectacled Cayman.
- ROWAN, Prof. William, F.Z.S., 5 Snowbirds, 3 White-throated Song Sparrows, 1 White-crowned Song Sparrow, *1 Lincoln's Sparrow.
- RUNGE, C., 1 Smooth Snake.
- SADAR, H., 5 Foxes.
- SANDERSON, F., 1 Tawny Owl.
- SCIENCE AND TECHNOLOGY, Imperial College of, 2 Black Rats.
- SEDDON, Miss Felicity, 1 Feline Douroucoul.
- SELF, Mrs., 1 Sooty Mangabey.
- SHAMDASANI, L. T., 2 Common Mynas.
- SHERRIFF, Albert, F.Z.S., *1 Reeves' Thrush, 1 Military Starling, 2 Orange-flanked Parrakeets, 3 Red-masked Conures, 1 White-tailed Jay.

- SIMBERG, D. A., 3 Silver-Grey Opossums.
 SIMPSON, F. W. N., 1 Marmoset.
 SKIPWITH, Mrs., 1 Ring-tailed Lemur.
 SMITH, D., 1 Delalande's Gecko.
 SMITH, Sidney H., F.Z.S., Lampreys.
 SOMERVILLE, W. C., 1 Snowy Owl.
 SOUL, G. H., 1 Collared Turtle Dove (White var.).
 STOCKHAUSEN, J. A., 1 Argus Gecko.
 STONE, Mrs., 5 Greek Tortoises.
 STRIDE, P. F., Lampreys.
 STUART, Staff Commander Douglas, 2 Reticulated Pythons.
 STUKINS, W., 1 Pennant's Parrakeet.
 SURTORIS, Miss Evelyn, 1 Chameleon.
 TAYLOR, A., 1 Barn Owl.
 THAMES WHARF, LTD., The, 1 Imperial Boa.
 THRELFALL, Bequest of the late Mrs. L. T., F.Z.S., 1 Festive Parrot.
 THROUGHTON, Lt. H. D., R.N., 3 Chinese Alligators.
 TONGE, Miss Olive, 1 Starred Lizard.
 TUBBINS, A., 1 Osprey.
 TUFNELL, Capt. Beauchamp Le F., 4 Ring-necked Pheasants.
 TUNSON, R. E., 1 Diced Water Snake.
 TURNER, R. C., 3 Japanese Newts, 2 Crested Newts, 2 Alpine Newts.
 UPSTONE, G. C., C.M.Z.S., *1 Black Duiker, 1 Bay Duiker, *4 Tullberg's Rats, *2 Sikapus's Mice, 4 Elegant Striped Mice, 1 White-spotted Squirrel, 1 Olive Baboon, 1 Nile Monitor, 1 Black-thighed Hornbill, 2 Bronze-winged Mannakins, 1 Congo Red-headed Parrot, 3 African Barn Owls, 1 Black & White Sparrow Hawk.
 WALKER, Mrs. Crawford-, 5 Budgerigars (Blue var.), 1 Budgerigar (Cobalt var.).
 WALL, Miss B., 1 Marmoset.
 WALSH, C., 2 Passerine Ground Doves.
 WALTER, Miss F. G. V., F.Z.S., 1 Grey Mongoose.
 WARBURG, Wolfgang, 1 Chameleon.
 WARD, D. F., 4 European Tree Frogs, 1 Green Toad, 1 Spotted Salamander.
 WARDER, G. A., 1 Shag.
 WATSON, Miss M. A., 1 Feline Douroucoulis.
 WEAVER, G. S., 1 Golden-fronted Fruitsucker, 2 Pekin Robins.
 WEBB, C. S., 1 Bosman's Potto, 1 Gambian Tree Squirrel, 1 Frog. *Sp. inq.*
 WEBSTER, Mrs. C. H., 3 "Waltzing" Mice.
 WEST, Miss Marjory S., B.A., 1 Green Singing Finch.
 WHEATLEY, Mrs. G., F.Z.S., 1 Ariel Toucan.
 WHITE, A. J., 4 Iguanas.
 WILLS, Mrs. M. B., 1 Indian Shama.
 WINSOR, Mrs., 1 Banded Mongoose.

- WITHINGTON, Mrs., 1 White-spotted Squirrel.
 WOOD, Mrs., 1 European Squirrel.
 WOOD GREEN POLICE STATION, 1 Grass Snake.
 WUILLE, Messrs. Dan, & Co., Ltd., 1 Harlequin Snake.
 YEATES, H., 1 Budgerigar.
 YOUNG, Mrs. Cochrane-, 4 Budgerigars (White var.), 2 Budgerigars (Yellow var.), 2 Budgerigars (Blue var.), 1 Budgerigar (Mauve var.), 1 Budgerigar (Green).
 YOUNG, Denys, 1 Fierce Soft-shelled Turtle, 2 White's Tree Frogs.
 ZAMMET, C. G., 6 Wall Lizards.

74. LIST OF ANIMALS DEPOSITED DURING 1937.

* = New to collection.

Mammals.

- | | |
|----------------------------|---------------------------|
| 1 Grey Gibbon. | 1 Banded Mongoose. |
| 1 Green Monkey. | 1 Dorsal Squirrel. |
| 1 Bushy-tailed Bush Baby. | 1 Grizzled Hill Squirrel. |
| 1 European Wild Cat. | 1 Crested Porcupine. |
| 1 Indo-Malayan Palm Civet. | 1 Okapi. |
| 1 Binturong. | 2 Axis Deer. |
| 1 Ruddy Mongoose. | 1 Giant Forest Hog. |
| 1 Ring-tailed Coati. | 1 Wart Hog. |

Birds.

- | | |
|------------------------------|-------------------------------------|
| *1 Fawn-breasted Bower Bird. | *1 Splendid Sunbird. |
| 3 Golden-crested Mynas. | *1 Buff-throated Sunbird. |
| 3 Pagoda Starlings. | 1 Indian White-Eye. |
| 4 Southern Hill Mynas. | *1 New Guinea Wood Swallow. |
| 1 Racket-tailed Drongo. | 1 Siberian Ground Thrush. |
| *1 Paradise Tanager. | 1 Yellow-billed Whistling Thrush. |
| 2 White-capped Tanagers. | 1 White-tailed Blue Robin. |
| 2 Yellow-winged Sugar Birds. | 1 Indian Shama. |
| 6 Purple Sugar Birds. | 1 White-crested Jay Thrush. |
| 1 Blue Grosbeak. | 1 Diard's White-crested Jay Thrush. |
| 1 Hooded Siskin. | 1 Golden-fronted Fruitsucker. |
| 5 Rose Finches. | 1 Ceylon Red-vented Bulbul. |
| 5 Black-headed Buntings. | 2 Red-eared Bulbuls. |
| 1 Spinebill. | 2 Large Minivets. |
| *1 Ring-necked Honey Eater. | 1 Japanese Blue & White Flycatcher. |
| 1 Golden-winged Sunbird. | 2 Verditer Flycatchers. |
| 2 Purple Sunbirds. | 2 Black-hooded Pittas. |
| 1 Amethyst-rumped Sunbird. | |

- | | |
|---------------------------------------|-------------------------------|
| 2 Blue-tailed Pittas. | 1 Falconet. |
| 1 Ariel Toucan. | 1 Shag. |
| 2 Senegal Touracous. | 2 Whistling Swans. |
| 1 Pucheran's Emerald Humming
Bird. | 2 Snow Geese. |
| 2 Hoopoes. | 13 Whistling Tree Ducks. |
| 3 Keas. | *5 Blue-backed Egrets. |
| 7 Ruffed Lories. | 9 Grey-necked Crowned Cranes. |
| 1 Blue-fronted Parrot. | 3 Black-tailed Godwits. |
| 1 Yellow-shouldered Parrot. | 7 Ruffs. |
| 2 Panama Parrots. | 6 Egyptian Plovers. |
| 2 Golden-naped Parrots. | 1 Puffin. |
| 1 Green-cheeked Parrot. | 2 Indian Necklace Doves. |
| 1 Queen Alexandra's Parrakeet. | 2 Passerine Ground Doves. |
| 2 Pennant's Parrakeets. | 2 Indian Green-winged Doves. |
| 2 West African Wood Owls. | 1 Red-crested Wood Quail. |
| 1 Short-toed Eagle. | 7 Impeyan Pheasants. |
| | 3 Common Peafowl. |

Reptiles.

- | | |
|--------------------------|-------------------------|
| 1 Grooved Tortoise. | 1 Rough-necked Monitor. |
| 2 Golden Hylas. | 3 Blood Pythons. |
| 6 Long-necked Terrapins. | 1 Rainbow Boa. |
| 1 Alligator. | 1 Anaconda. |
| 2 Texas Ground Geckos. | 1 Common Boa. |

75. LIST OF ANIMALS RECEIVED IN EXCHANGE DURING 1937.

* = New to Collection.

Mammals.

- | | |
|----------------------|----------------------|
| 49 Rhesus Monkeys. | 4 Pandas. |
| 1 Mandrill. | 2 Polar Bears. |
| 4 Dingoes. | 1 Lamb. |
| 4 Raccoon-like Dogs. | 6 Blackbuck. |
| 1 Polecat. | 1 Indian Wild Swine. |
| 2 Wolverines. | |

Birds.

- | | |
|-----------------------------|---------------------------------|
| 1 Fawn-breasted Bower Bird. | 1 Garnet-throated Humming Bird. |
| 1 Paradise Whydah Bird. | 1 Blue-fronted Parrot. |
| 1 Shining Weaver Bird. | 1 Crimson-winged Parrakeet. |
| 1 Bluebird. | *1 Asiatic Lammergeyer. |
| 1 Fraser's Humming Bird. | 1 Great Spotted Eagle. |

- 1 Steller's Sea Eagle.
- 1 Falconet.
- 4 Whooper Swans.
- 1 Mandarin Duck.
- 16 Red-breasted Geese.

- 2 Blue-winged Geese.
- 2 Australian Sheld Duck.
- 72 Cattle Egrets.
- 2 Red Jungle Fowl.
- 1 Brush Turkey.

Reptiles.

- 2 Stink-pot Mud Terrapins.
- 4 Painted Terrapins.
- 1 Florida Terrapin.
- 1 Sculptured Terrapin.
- 2 West Indian Masked Lizards.
- 3 American Glass Snakes.
- 2 Common Garter Snakes.
- 7 Butler's Garter Snakes.
- 4 Corn Snakes.
- 2 Fox Snakes.
- 2 Pilot Black Snakes.
- 3 Chicken Snakes.
- 2 Coach-whip Snakes.
- 3 Pine Snakes.

- 1 Faded Snake.
- 2 King Snakes.
- 1 Florida King Snake.
- 2 Californian King Snakes.
- 1 Reinhardt's Tree Snake.
- 9 Banded Kraits.
- 34 Indian Cobras.
- 8 Russell's Vipers.
- 3 Water Moccasins.
- 6 Copperheads.
- 6 Prairie Rattlesnakes.
- 2 Diamond Rattlesnakes.
- 1 Sidewinder.

76. LIST OF ANIMALS PURCHASED DURING 1937.

* = New to Collection.

Mammals.

- 1 Chimpanzee.
- 56 Rhesus Monkeys.
- 2 Ethiopian Hedgehogs.
- 2 Banded Mongooses.
- 12 Arctic Foxes.
- 2 Cape Hunting Dogs.
- 1 Bush Dog.
- 2 European Otters.

- 4 Raccoons.
- 2 Pandas.
- 5 Brown Bear Cubs.
- 2 Californian Sea Lions.
- 2 Capybaras.
- 1 Indian Elephant.
- 1 Great Anteater.
- 2 American Opossums.

Birds.

- 1 Rifle Bird.
- 1 King Bird of Paradise.
- 1 Hunstein's Magnificent Bird of Paradise.
- *1 Orange-wattled Bird of Paradise.
- *1 Helena's Six-plumed Bird of Paradise.

- *2 Greater-crested Gardener Bower Birds.
- 1 Siberian Ground Thrush.
- *6 Resplendent Trogons.
- 4 Swallow-tailed Humming Birds.
- 5 Pucheran's Emerald Humming Birds.

- | | |
|---------------------------------------|-----------------------------|
| 1 Jacobin Humming Bird. | 2 Common Buzzards. |
| 3 Fraser's Humming Birds. | 1 Guiana Crested Eagle. |
| 1 Lesson's Emerald Humming Bird. | 2 Snow Geese. |
| 1 White-bellied Emerald Humming Bird. | 4 Red-breasted Geese. |
| 3 Ruby-crested Humming Birds. | 2 Tiger Bitterns. |
| 2 Black-throated Mango Humming Birds. | 2 Glossy Ibis. |
| 14 Budgerigars. | 2 Scarlet Ibis. |
| 10 Budgerigars (Blue var.). | 1 Red-crested Wood Quail. |
| | 3 Lady Amherst's Pheasants. |
| | 4 Massai Ostriches. |

Reptiles.

- | | |
|----------------------------------|-------------------------------|
| 6 Long-necked Terrapins. | 12 Aesculapian Snakes. |
| 1 Moorish Gecko. | 2 American Black Snakes. |
| 12 Bibron's Geckos. | 1 Yellow-bellied Racer. |
| 23 Carolina Anolis Lizards. | 1 Coachwhip Snake. |
| 4 Rhinoceros Iguanas. | 2 Hog-nosed Snakes. |
| 2 Crowned Horned Lizards. | 2 Smooth Snakes. |
| 2 Bearded Lizards. | 1 Milk Snake. |
| 2 Lesueur's Water Lizards. | 1 Green Snake. |
| 6 Chameleons. | 2 Ringhals. |
| 1 Cunningham's Skink. | 8 Montpellier Snakes. |
| 3 Stump-tailed Skinks. | 5 Yellow Cobras. |
| 3 Northern Blue-tongued Skinks. | 5 Night Vipers. |
| 1 Southern Blue-tongued Skink. | 6 Long-nosed Vipers. |
| 12 Eyed Skinks. | 1 Puff Adder. |
| 2 Gila Monsters. | 1 Nose-horned Viper. |
| 5 Lord Derby's Zonures. | 2 Water Moccasins. |
| 24 Rough-scaled Girdled Lizards. | 1 Prairie Rattlesnake. |
| 24 Pallas's Glass Snakes. | 1 Diamond-backed Rattlesnake. |
| 8 Slowworms. | 5 Timber Rattlesnakes. |
| 1 Reticulated Python. | 12 Crested Newts. |
| 1 Anaconda. | 100 Green Newts. |
| 2 Emperor Boas. | 12 Pleurodele Newts. |
| 2 Guianan Cylinder Snakes. | 6 Fire-bellied Toads. |
| 2 Green Water Snakes. | 12 Yellow-bellied Toads. |
| 8 North American Water Snakes. | 3 Brown Mud Frogs. |
| 1 False Moccasin. | 20 Sealing Wax Toads. |
| 4 Ribbon Snakes. | 25 European Tree Frogs. |
| 3 Cape Snakes. | 14 Edible Frogs. |
| 4 Aldrovandi's Snakes. | |

77. INSECTS.—The Insect House, well stocked throughout the year with many attractive exhibits, received its full quota of visitors. Beside the usual features such as silk-moths, caterpillars, aquatic insects, mantids, ants, spiders, scorpions, etc., giant centipedes and black widow spiders may be especially mentioned. During the autumn the land-crabs were transferred to the Reptile House, and the space vacated by them was adapted for an exhibition of insects of economic importance—pests of timber, stored products, and gardens, and beneficial species. Another new feature is a range of low-power lenses for the exhibition of small aquatic animals, etc.

78. AQUARIUM.—Large collections were again received from the coast of Madeira, Folkestone and Brighton, and the Zoological Society is again especially indebted to Mrs. E. B. Carter for organising the capture of the specimens from the first-named locality. The silver medal of the Society has been awarded to Mrs. Carter in recognition of her services. The thanks of the Society are due to the Union Castle Mail Steamship Company for transporting specimens from Madeira in tanks built for the purpose on two of their mail steamers.

Valuable collections of fish from the coast of Florida were received in exchange from the Aquarium of the New York Zoological Society.

Mr. H. Vinall, the Aquarium overseer, was sent in the Autumn on an expedition to the Red Sea to collect specimens. In connection with this activity, which was only a partial success owing to the severe gales encountered on the return journey, the Society is indebted to Colonel E. T. Peel, who generously put his yacht at the disposal of the expedition.

The Aquarium authorities wish to record their indebtedness to Mr. Douglas P. Wilson and Dr. L. H. N. Cooper, of the Marine Biological Association of the United Kingdom, and to Miss Eleanor Brown, a former Aquarium Research Fellow, who gave valuable advice in connection with the composition of the Aquarium sea water.

79. PRICE OF ADMISSION TO THE AQUARIUM.—The price of admission to the Aquarium has in the past been 1s. except on Mondays (with the exception of Bank Holidays) when it was 6*d.* It has been decided, as an experimental measure for the present year, to reduce the admission to 6*d.* on Saturdays as well as Mondays.

F. WHIPSNADDE ZOOLOGICAL PARK.

(I) VISITORS AND GENERAL.

80. NUMBER OF VISITORS.—The figures for the year 1937 show an increase of 61,965 as compared with 1936.

The figures for the last five years are as follows :—

1933	1934	1935	1936	1937
433,429	516,411	471,545	484,453	546,418

Three records were broken during the year: 546,418 visitors is the highest number for any year, 27,517 on Whit-Monday upon any day, and 137,895 during August for any month.

81. BEDFORDSHIRE COUNTY POLICE.—As in previous years this force has been available and has worked in harmony with the Society's staff.

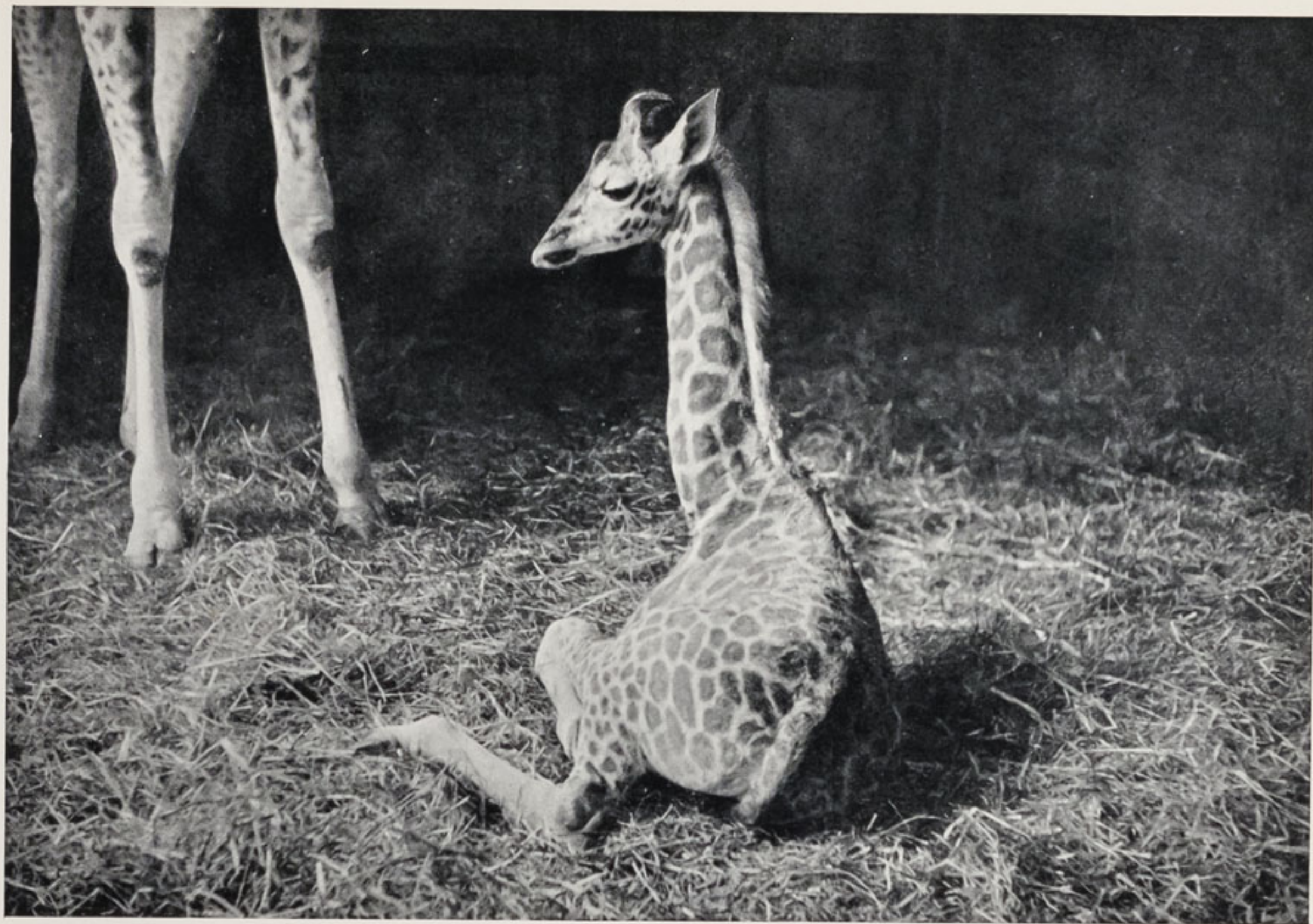
82. FIRST AID AND MEDICAL ATTENDANCE.—The Area Commandant of the local section of the St. John Ambulance Brigade has placed at our Ambulance Station every Sunday, from 1st April to 30th October, one non-commissioned officer, two privates, and one sister. On very busy days an officer has been in charge of the unit.

83. GUIDE.—Of the guide to the Park, 54,288 copies were sold in 1937, as compared with 47,358 in 1936.

84. POSTCARDS.—87,172 of the Society's postcards were sold during the year, as compared with 65,253 in 1936.

85. EASTERN NATIONAL OMNIBUS SERVICE.—This service operates from Luton Station to the Car Park at Whipsnade. It is the connecting link between the rail service from St. Pancras to Whipsnade. 91,476 visitors were carried to Whipsnade by this bus service.

86. METEOROLOGY.—Mr. E. L. Hawke, M.A., F.R.A.S., Secretary to the Royal Meteorological Society, who lives at Dagnall, has taken a great interest in our Station, and has visited it on an average once a week. He presented a standard Campbell-Stokes sunshine recorder which has been erected on a site giving almost perfect exposure at all seasons, at an altitude of approximately



BABY GIRAFFE BORN AT WHIPSNAD, DECEMBER 27, 1937

750 feet above mean sea level. He stated that its records are of special interest as being the first yet maintained on any of the higher summits of the Chiltern Hills.

(II) CATERING.

87. ACCOMMODATION.—Additional covered accommodation has been provided at Triangle Kiosk, and Avenue Kiosk has been entirely rebuilt on an enlarged scale.

88. ASSISTANT MANAGER.—Mr. Bonvin was reappointed Assistant Manager at Whipsnade for the summer (March 15th to September 30th).

89. ACCOUNTS.—The Catering Department Accounts for the year 1937 have been audited by Messrs. W. B. Keen & Co. The gross profit for the year 1937 amounted to £17,432 9s. 10d. Deducting the manufacturing and other working expenses amounting to £12,181 17s. 9d., and adding lavatory and other sundry receipts (£1,213 8s. 4d.), there remains a trading profit of £6,460 0s. 3d. After deducting the Assistant Manager's bonus (£40), and the contribution to the Equipment and Repairs Stabilization Fund (£1,500), there was a net profit of £4,920 0s. 3d. Of this a sum of £805 16s. 6d. has been repaid to the Works Department for work carried out during the year. The balance of £4,114 3s. 9d. has been passed to the General Account.

The expenditure on Equipment and Repairs amounted to £1,324 5s. 4d., against the contribution of £1,500, leaving a balance of £175 14s. 8d., which has been placed to the credit of the Equipment and Repairs Stabilization Fund.

(III) PARK.

90. GENERAL REPORT.—The general health of the animals throughout the year has been good. Events worth recording are as follows :—

Brown Bear reared; transferred to Regent's Park at three months old.

Male Bactrian Camel reared.

Wild Horse reared.

Four Tiger cubs reared.

A litter of 3 Raccoon-like Dogs reared.

Two Ostrich chicks hatched; transferred to Regent's Park.
 A Giraffe calf female, born on December 27th.
 Pair of Demoiselle cranes reared.

The following were the principal deaths :—

- 1 Polar Bear, from paralysis.
- 1 Mongolian Wild Horse, from septicaemia following dystokia.
- 2 Wild Cats, from cat distemper.
- 1 Cape Buffalo female, from syncope following congestion of the lungs and distended stomach.
- 3 European Bison, destroyed.
- 22 Wolves, from wolf septicaemia.

The Superintendent carried out 122 post-mortems on other animals.

In addition to the species exhibited during 1936, the following new species were shown during 1937 :—

Onager; Wart Hog; Australian Crested Pigeon; Cape Buffalo; Sacred Ibis; Scarlet Ibis; Golden-rumped Agouti; Red-breasted Geese; White-fronted Sheld-duck; Elk; Hairy Armadillo; Wild Cat; Manchurian Crossoptilon.

Brush-turkey Mound.—The 1935 mound was left and the Brush-turkeys (1 cock and 4 hens) used it throughout the year 1936. The mound was broken up during 1937. The height was 6 ft., weight approximately 10 tons, circumference 56 feet. 60 eggs had been laid during the two years, and the number seen to have hatched was 20; 3 chicks were found dead in the mound.

91. AGRICULTURE AND GARDENING.—About 50 tons of agricultural lime has been used on the different enclosures. Lime is food for plant life, kills off moss, works on clay, is a sterilizer, and kills off the ova of helminths. The year has been a good one for conserving hay; some 170 tons of hay have been made.

Vermin.—Many rabbits have been killed, of which a large proportion were supplied to the London Gardens.

1,487 rats were caught and killed during the year.

Gardening. H.G. the Duke of Bedford, K.G., F.R.S., has again been a generous donor of plants, trees, and shrubs. The cut-flower department has supplied excellent blooms for the Restaurants at London and Whipsnade.

92. ENGINEER'S SECTION.—New installations :—

Ideal boiler and cooking range at Keepers' Bothy.

Ideal boiler and central heating for staff rooms at Restaurant.

One-inch water supply to Elk enclosure.

Maintenance of electrical, water and refrigerator systems.

Supervision of fire prevention equipment and fire drills.

Water pumped during the year amounted to 4,637,500 gallons, an increase of 187,775 gallons over the previous year. 3,405,700 gallons of water were passed through the water softening plant for drinking purposes. During the year the water in the well and reservoir was tested bacteriologically and chemically. The water was passed as wholesome and fit for drinking.

93. WORKS.

No major works were undertaken throughout the year.

Minor works undertaken by our Works Department included the following :—

Elk Enclosure.

Finishing off Husky Dog Enclosure.

Wild Cat Enclosure.

Camel Shed enlarged.

Bus Shelter enlarged to meet traffic of L.P.T.B. line of coaches from St. Albans.

Car Park. Removal of manual petrol pumps and substitution of electric pumps.

New hygienic dens at Wolf Wood.

Two drinking fountains for the public, presented by the Metropolitan Drinking Fountain and Cattle Trough Association of Victoria Street, were erected in the Park.

Numerous strong barriers have been erected for the protection of trees in the different paddocks.

Restaurant Hall Farm. The walls of the Restaurant were decorated by Mr. John Skeaping, F.Z.S., with animal paintings, which have attracted much favourable comment.

94. STAFF.—1 Clerk of Works; 1 Engineer; 3 Clerks; 1 Overseer; 18 Keepers; 49 Works Staff; 6 Gardeners. Total 79.

Refreshment Dept.—Summer 80, Winter 20.

95. NUMBERS IN THE COLLECTION.

Animals at Whipsnade on December 31st, 1937.

Mammals	822
Birds	603
Reptiles	27

[In the case of the Chinese Water Deer, Muntjac, Wild Turkeys, etc., loose in the Park and breeding freely, the numbers are only an estimate.]

96. BRED AT WHIPSNAD, 1937.

R = reared to maturity. D = died. L = living.

Mammals.

- 5 Tigers (*Felis tigris*), 4 R, 1 D.
- 21 Husky Dogs (*Canis familiaris dingo*), 17 R, 4 D.
- 6 Dingoes (*Canis familiaris* var.), R.
- 3 Raccoon-like Dogs (*Nyctereutes procyonoides*), R.
- 1 Brown Bear (*Ursus arctos*), R.
- 35 Prairie Marmots (*Cynomys ludovicianus*), R.
- 15 American Marmots (*Marmota monax*), R.
- 1 Hairy-rumped Agouti (*Dasyprocta prymnolopha*), R.
- 10 Shetland Ponies (*Equus caballus*), R.
- 1 Mongolian Wild Horse (*Equus caballus przewalskii*), R.
- 2 Chartley Cattle (*Bos taurus*), 1 R, 1 D.
- 2 Yaks (*Poephagus grunniens*), 1 R, 1 D.
- 3 American Bison (*Bison bison*), R.
- 21 Park Sheep (*Ovis aries*), R.
- 7 Mouflon (*Ovis musimon*), R.
- 2 Patagonian Cavies (*Dolichotis magellanica*), 1 R, 1 D.
- 2 Chapman's Zebras (*Equus burchellii chapmanni*), R.
- 2 Highland Cattle (*Bos taurus*), D.
- 26 Spanish Sheep (*Ovis aries* var.), R.
- 3 Lechwe Waterbuck (*Kobus leche*), 2 R, 1 D.
- 1 Blackbuck (*Antilope cervicapra*), R.
- 7 Nylghaie (*Boselaphus tragocamelus*), 5 R, 2 D.
- 1 Baringo Giraffe (*Giraffa camelopardalis rothschildii*), L.
- 5 Muntjac (*Muntiacus muntjak*), R.
- 8 Fallow Deer (*Dama dama*), R.
- 1 Axis Deer (*Axis axis*), R.
- 2 Hog Deer (*Hyelaphus porcinus*), R.

- 1 Sambar Deer (*Rusa unicolor*), R.
- 3 Sika Deer (*Sika nippon*), R.
- 8 Red Deer (*Cervus elaphus*), R.
- 3 Virginian Deer (*Odocoileus virginianus*), 2 R, 1 D.
- 40 Chinese Water-Deer (*Hydropotes inermis*), R.
- 1 Bactrian Camel (*Camelus bactrianus*), R.
- 3 Llamas (*Lama glama*), R.
- 1 Great Grey Kangaroo (*Macropus giganteus*), R.
- 8 Bennett's Wallabies (*Macropus ruficollis bennetti*), R.
- 4 Dama Wallabies (*Macropus eugenii*), R.

Birds.

- 5 Mute Swans (*Cygnus olor*), R.
- 8 Black Swans (*Chenopsis atrata*), R.
- 2 Muscovy Duck (*Cairina moschata*), R.
- 2 Cereopsis Geese (*Cereopsis n. hollandiae*), R.
- 6 Chinese Geese (*Cygnopsis cygnoides*), R.
- 50 Mallard (*Anas platyrhynchos*), R.
- 1 Eastern Sarus Crane (*Megalornis antigone*), D.
- 18 Jungle Fowl (*Gallus gallus*), R.
- 8 Japanese Long-tailed Fowl (*Gallus gallus domesticus* var.), R.
- 10 Common Peafowl (*Pavo cristatus*), R.
- 4 Grey-breasted Helmet Guinea-fowl (*Numida galeata*), R.
- 6 North American Turkeys (*Meleagris gallopavo*), R.
- 4 Brush Turkeys (*Alectura lathamii*), R.
- 31 Emus (*Dromiceius n. hollandiae*), 24 R, 7 D.
- 2 Ostriches (*Struthio camelus*), D.

97. LIST OF DONORS TO WHIPSNADDE PARK.

- BROWN, A. F. Rossiter, 6 Crested Pigeons.
- CHAPLIN, The Hon. Anthony, F.Z.S., 2 European Wild Cats.
- DALTON, A. M., 1 Cormorant.
- PONSONBY, Bequest of the late C. G. Talbot, F.Z.S., 5 Bean Geese, 1 White-fronted × Pink-footed Goose, 4 Grey Lag Geese, 1 Pink-footed Goose, 2 White-fronted Geese, 1 Egyptian Goose × Ruddy Shelduck, 24 Mallard, 4 Chinese Geese, 4 Canadian Geese, 3 Upland Geese, 2 Bar-headed Geese, 2 Brent Geese, 4 Ruddy Shelduck, 3 Common Shelduck, 1 Carolina Duck, 2 Mandarin Ducks, 1 Chiloe Wigeon, 4 Australian Wild Ducks, 2 Yellow-billed Ducks, 1 Spot-billed Duck, 2 Pochard, 1 Gadwall, 5 Mallard (Black var.), 3 Black-backed Kalij Pheasants, 2 Black-breasted Kalij Pheasants, 1 Chinese Silver Pheasant, 4 Japanese Pheasants, 3 Mongolian Pheasants, 13 Common Pheasants, 7 Red Jungle Fowl, 3 Muscovy Ducks.
- WOODWARD, W. A., 4 European Hedgehogs.

98. LIST OF ANIMALS PURCHASED DURING 1937.

Mammals.

1 Polar Bear.

Birds.

2 Common Wigeon.

2 Shoveler Ducks.

1 Chiloe Wigeon.

2 Rosy-billed Ducks.

2 Tufted Ducks.

99. LIST OF ANIMALS DEPOSITED DURING 1937.

Mammals.

4 Shetland Ponies.

2 Hairy Armadilloes.

G. FINANCE.

100. INCOME AND EXPENDITURE.

- (a) REGENT'S PARK. *Income.*—There were 15,225 Visitors less in 1937 than in 1936, the number (1,946,897) being the eighth highest in the history of the Society. The receipts under the heading Admissions to Gardens are only £18 18s. 2d. less than the previous year, the difference being due largely to the special 2s. 6d. tickets sold to Visitors to the Coronation. The total income amounted to £125,060 3s. 5d., an increase of £1,444 9s. 11d.
- (b) REGENT'S PARK. *Expenditure.*—The expenditure amounted to £117,487 12s. 3d., a decrease of £8,778 19s. 10d.
- (c) *Excess of Income over Expenditure.*—There is thus an excess of Income over Expenditure of £7,572 11s. 2d.
- (d) WHIPSNADDE PARK. *Income.*—There was an increase of 61,965 in the number of Visitors, and the receipts for admission show an increase of £2,685 8s. 11d. The total income amounted to £35,996 19s. 8d., an increase of £5,439 16s. 9d.
- (e) WHIPSNADDE PARK. *Expenditure.* — The expenditure amounted to £28,306 14s. 8d., a decrease of £3,866 13s. 10d.
- (f) *Excess of Income over Expenditure.*—There was an excess of Income over Expenditure of £7,690 5s. 0d.

101. ASSETS 1936 AND 1937.—At the end of the year the total Assets of the Society amounted to £255,319 6s. 5*d.*, an increase of £28,994 5s. 4*d.* on the corresponding figure for 1936. The Assets do not include the de Arroyave Fund.

102. LIABILITIES 1936 AND 1937.—The liabilities amounted to £46,922 10s. 8*d.*, an increase of £6,434 8s. 5*d.* on the corresponding figures for 1936.

103. PENSIONS FUND.—The Pensions Fund, instituted in 1926, increased in 1937 by £315 10s., being the amount of the composition fees of 7 compounders who had died in the course of the year, and a donation of 10s. It now amounts to £10,850 9s. 0*d.*

104. BALANCE 1936 AND 1937.—The balance, a surplus of assets over liabilities, amounted to £208,396 15s. 9*d.*, an increase of £22,559 16s. 11*d.* on the corresponding figure for 1936, representing the difference between the increase in assets (paragraph 103) and increase in liabilities (paragraph 104).

105. DE ARROYAVE FUND.—The Capital of this is shown separately, as it is a Trust Fund and not part of the assets of the Society (see pp. 88–89).

106. LEGACIES TO THE SOCIETY.—The Society received three legacies during the year :—

£80 from the late Madame Berthe M. Heer, to be invested and the income used to buy fruit to be distributed on the three Bank Holidays and Boxing Day among such monkeys as are neglected by the public.

£250 from the late Mrs. M. L. Paget.

£1000 from the late Miss Julia Lindley.

The second of these is being used to provide coloured picture labels of birds and the third for the construction of a Rep-tiliary at Whipsnade.

Signed (for the Council),

JULIAN S. HUXLEY,

Secretary, Zoological Society, London.

Zoological Society,
Regent's Park,
London, N.W.8.

March 16th, 1938.

INDEX TO CONTENTS

	PAGE
Accounts	72
Acknowledgments	47
Additions to Collection, 1936-37	40
Anatomical Research Fellowship	29
Animal Art, Exhibition of	20
„ Conservation	23
„ Protection	30
Animals and Cinema Films	32
Animals Bred in 1937	40, 64
„ Deposited	55, 66
„ New to Collection	43
„ Numbers of	40, 64
„ Presented	47
„ Purchased	57, 66
„ Received in Exchange	56
Annual General Meeting	7, 65
Aquarium	19, 33, 59
„ Visitors in 1937	33
Auditors, Reports of, for 1937	71
Band	34
Bequests to the Society	10, 67
Broadcasting and Lecturing	21
By-laws, Revision of	11
Catering Departments	16, 35, 61
Children's Zoo	15
Chillingham Cattle	31
Commissariat	38
Contents, List of	3
Coronation Arrangements	9
Corresponding Membership	22
Curators, Assistant	10
De Arroyave Fund	67
Donors and their Donations, 1937	47, 65
Education	17
Electrical Department	36
Evening Opening of Gardens	16, 33
Fauna Society	30
Fellows and Members, List of	22
Fellows, Roll of	21
Fellowship, Professional	8
Films, Zoological	19
Finance	66
Foreign Membership	22
Gardening Department	36

INDEX TO CONTENTS—*continued.*

	PAGE
Gardens, Visitors to	8, 32
Grants, Scientific and other	30
Guides and Picture Postcards	34, 60
Helminthology	48
Imperial Fellows	22
Insect House	59
International Bird Preservation	31
Legacies	10, 67
Library	25
Loan of Society's Rooms	30
Medals, Award of	10
Medical Attendance	34
Meetings, Scientific	23
Menagerie	38
Meteorology, Whipsnade	60
Midsummer Eve Entertainment	20
Nomenclator Zoologicus	24
Notable Exhibits	11
Onslow, Earl of	11
Open Evenings	16, 33
Ophthalmology	49
Pathology	28
Pensions Fund	67
Photographic Department	15
Presidents, Portraits of	11
Prosectorium	28
Publications, Scientific	18, 23
Queen Mary, H.M.	10
Refreshment Departments	16, 35, 61
Report, General	8
Research Fellowship	29
Research, Scientific	17, 29
Science and Animal Conservation	23
Scientific and Technical Card Index	16
Scientific Research	17, 29
Species New to Collection	43
Sports and Social Club	21
Staff	10, 35, 63
Students, Zoological and Veterinary	8
Treasurer, Assistant	10
Visitors	8, 32, 60
Whipsnade Zoological Park	60
Works Department	36, 63
Works, New, 1937	13, 37
"Zoological Record"	23
"Zoo" Magazine	19

REPORT OF THE AUDITORS OF THE ACCOUNTS

OF THE

ZOOLOGICAL SOCIETY

OF LONDON

To the Council and Fellows,
The Zoological Society of London,
Regent's Park, N.W.8.

In accordance with Chapter X of the By-laws, we hereby certify that we have audited the Accounts of the Society for the year ended 31st December, 1937, as shown by our certificate attached to the accompanying Accounts. We report to the Society that at that date the total Assets amounted to £255,319 6s. 5d., and the Liabilities to £46,922 10s. 8d., showing a surplus of Assets over Liabilities amounting to £208,396 15s. 9d., subject to the estimated values of some of the Assets. The Cash in the Bankers' hands and at the Office amounted to £30,439 17s. 3d.

(Signed) W. B. KEEN & Co.,
Chartered Accountants.

23, Queen Victoria Street, London, E.C.4.
24th February, 1938.

Comp.
Figures,
1936.

LIABILITIES.

£		£	s.	d.	£	s.	d.
	To Sundry Creditors for Provisions, Materials and General Expenses—						
	£4,907 General Account	6,091	7	10			
	1,946 Catering Departments	1,738	12	2			
6,853							
600	„ Subscriptions, etc., received in advance				7,830	0	0
	„ Reserve for Cost of “ Zoological Record,” being special donations towards Vols. 59 and onwards:—				631	1	3
	Balance at 1st January, 1937	1,999	16	9			
	Add Donations received during year	358	15	3			
		2,358	12	0			
	Deduct Amount transferred to Income and Expenditure Account during year	527	11	7			
2,000					1,831	0	5
	„ “ Zoo ” Magazine Suspense Account—						
	Balance at 1st January, 1937	175	0	0			
	Refunded during year	175	0	0			
175							
	„ Drummond’s Branch, Royal Bank of Scotland, Loan Accounts—						
	Regent’s Park Catering Department Building—						
	Balance at 1st January, 1937	20,325	0	0			
	Deduct Amount repaid during year	4,325	0	0			
20,325					16,000	0	0
	Art Studio Building—						
	Amount borrowed during year	4,500	0	0			
	Deduct Amount repaid during year	380	0	0			
					4,120	0	0
	Purchase of Land and Premises at Whipsnade—						
	Amount borrowed during year	1,200	0	0			
	Deduct Amount repaid during year	120	0	0			
					1,080	0	0
	„ Mortgage on Quarantine Station, Gloucester Gate—						
	Amount borrowed during year	4,875	0	0			
	Deduct Amount repaid during year	375	0	0			
					4,500	0	0
	„ Pensions Fund—						
	Balance at 1st January, 1937	10,534	19	0			
	Add Transfer of Fees of deceased Compounders	315	0	0			
	Donation	10	0				
10,535					10,850	9	0
	„ Heer Bequest—						
	Legacy received from the late Madame Berthe Heer				80	0	0
40,488					46,922	10	8
	„ Balance being Excess of Assets over Liabilities—						
	Composition Fund—						
	Balance at 1st January, 1937	19,290	0	0			
	Add Fees received during year	675	0	0			
		19,965	0	0			
	Deduct Transfer to Pensions Fund—Fees of deceased Compounders	315	0	0			
19,290					19,650	0	0
£59,778	Carried forward	£19,650	0	0	£46,922	10	8

Comp. Figures, 1936.

ASSETS.

£		£	s.	d.	£	s.	d.
	By Freehold Property, Whipsnade Park—						
	Cost of Land and Buildings, Enclosures, etc., including Redemption of Land Tax and Tithes at 1st January, 1937	82,406	8	0			
	Add Purchase of Land and Legal Costs during year	213	8	0			
		<hr/>					
		82,619	16	0			
70,312	Deduct Amount borrowed from Composition Fund (see page 75)	12,094	4	4			
		<hr/>			70,525	11	8
	„ Leasehold Property, Quarantine Station, Gloucester Gate—						
	Cost of Property purchased during year ...	4,875	0	0			
	Deduct Amount written off transferred to Income and Expenditure Account	375	0	0			
		<hr/>			4,500	0	0
	„ Plant, Fittings and Furniture—						
	In Buildings and Enclosures at Regent's Park and Whipsnade Park (not valued)						
3,122	In Catering Departments	3,122	2	11			
		<hr/>			*3,122	2	11
	„ Animals belonging to the Society—						
	Regent's Park—						
	Balance at 1st January, 1937	40,656	9	0			
	Deduct Net Decrease at 31st December, 1937	2,864	8	0			
		<hr/>					
	Whipsnade Park—						
	Balance at 1st January, 1937 13,975 4 0				37,792	1	0
	Add Net Increase at 31st December, 1937 1,631 8 0						
		<hr/>			15,606	12	0
54,632							
	„ Books in Library—						
	Balance at 1st January, 1937*	28,480	15	0			
	Add Increase on re-valuation	6,519	5	0			
28,481		<hr/>			*35,000	0	0
	„ Stocks in hand—						
	General Account—						
500	Publications	*500	0	0			
500	“ Zoological Record ”	*500	0	0			
10	Animal Wheel	*10	0	0			
297	Electrical Sundries (at cost)	*189	3	5			
335	Official Guides, Regent's Park (at cost) ...	206	15	0			
355	Do. Whipsnade Park (at cost) ...	189	9	9			
125	Picture Post Cards, Regent's Park (at cost) ...	239	8	4			
70	Do. Whipsnade Park (at cost) ...						
50	Photographic Films, Souvenirs, etc. (at cost) ...	47	3	11			
77	Petrol, Oil, etc., Whipsnade Park (at cost)	79	5	6			
3,913	Catering Departments—Provisions, etc. (at cost)	*4,564	6	3			
		<hr/>			6,525	12	2
£162,779	Carried forward				£173,071	19	9

* As per valuations by Society's Officials.

LIABILITIES.

Comp. Figures, 1936.		£	s.	d.	£	s.	d.	£	s.
59,778	Brought forward				19,650	0	0	46,922	10
	To Balance being Excess of Assets over Liabilities—<i>continued</i>—								
	Animals Purchase and Insurance Fund—								
	Balance at 1st January, 1937 ...	2,365	2	11					
	Add Interest on Investments ...		57	2	6				
	Contribution from Income and Expenditure Account		300	0	0				
2,365							2,722	5	5
	Aquarium Reserve Fund—								
	Balance at 1st January, 1937 ...	10,349	9	3					
	Add Contribution from Income and Expenditure Account		1,000	0	0				
	Receipts from Sale of Ivory Tickets during year ...		10	0	0				
					11,359	9	3		
	Deduct Transfer to Income and Expenditure Account ...		280	0	0				
10,349							11,079	9	3
	Catering Departments Equipment and Repairs Stabilisation Fund—								
	Balance of Plant and Renewals Fund at 1st January, 1937 ...	1,801	5	3					
	Add Annual Contribution by Catering Department ...		6,500	0	0				
					8,301	5	3		
	Deduct Expenditure by Catering Departments during year		5,873	15	8				
1,801							*2,427	9	7
	Elephant House Re-building Fund—								
	Balance at 1st January, 1937 ...	1,500	0	0					
	Deduct Transfer to Income and Expenditure Account ...		1,284	17	0				
1,500							215	3	0
	Depreciation of Investments Reserve Fund—								
2,334	Balance at 1st January, 1937 ...						*2,333	13	11
	Purchase of Animals Suspense Account—								
	Grant received during year for Mr. Floyd Smith's Expedition		850	0	0				
	Deduct Payment on account ...		400	0	0				
							450	0	0
	Legacies Suspense Account—								
	Legacy received from the Trustees of the late Herbert Spencer to be applied towards the cost of the "Nomenclator Zoologicus"								
	Balance at 1st January, 1937 ...	813	12	9					
	Deduct Amount transferred to Income and Expenditure Account		477	14	1				
					335	18	8		
£78,127	Carried forward	£335	18	8	£38,878	1	2	£46,922	10

* The Market Value of the Securities held on 31st December, 1937, at minimum Stock Exchange quotations was £34,340 5s. 0d., showing a Depreciation of £1,988 18s. 2d. on original cost.

Comp.
Figures,
1936.

ASSETS.

	£		£	s.	d.	£	s.	d.
s. 10	162,779	Brought forward				173,071	19	9
		By Debts due to the Society (since received or considered good)—						
		General Account—						
	150	Arrears of Fellowship Subscriptions £704 6s. 0d., estimated to realise	175	0	0			
	300	Arrears of Admission Fees (Fellows) £321, estimated to realise	250	0	0			
	993	“Zoological Record” Subscriptions and Sales £833 5s. 0d., estimated to realise	766	17	9			
	144	Publication Subscriptions and Sales £236 17s. 7d., estimated to realise	224	2	10			
	179	Sundry Sales, etc., £191 13s. 3d., estimated to realise	184	4	9			
	9	Income Tax Recoverable	27	11	0			
	441	Miscellaneous	140	3	10			
	318	Catering Department—Miscellaneous	263	8	7			
						2,031	8	9
		„ Rates, Insurances, etc., paid in advance—						
		£771 General Account	910	14	2			
		328 Catering Departments	362	1	3			
	1,099					1,272	15	5
	148	„ “Zoological Record” Compilation Fees, etc., paid in respect of Vol. 74, not yet published				79	17	9
		„ Investments (at cost)—						
		Pensions Fund—						
	10,520	£10,488 9s. 0d. Conversion 2½ per cent. Stock				10,849	19	0
	—	Heer Bequest—						
		£90 8s. 10d. Local Loans 3 per cent. Stock				80	0	0
		Composition Fund—						
		Whipsnade Park (Part Purchase Price)	12,094	4	4			
	18,975	£7,263 6s. 6d. Conversion 2½ per cent. Stock	7,465	15	8			
						19,560	0	0
	2,359	Animals Purchase and Insurance Fund—						
		£2,652 8s. 3d. Conversion 2½ per cent. Stock				2,719	0	1
	10,329	Aquarium Reserve Fund—						
		£10,763 1s. 1d. Conversion 2½ per cent. Stock				11,079	9	3
		Catering Departments—Equipment and Repairs						
		Stabilisation Fund—						
		£1,430 4s. 9d. Conversion 2½ per cent. Stock	1,501	5	3			
		£288 16s. 10d. Funding 3 per cent. Stock	300	0	0			
	1,801					1,801	5	3
	2,334	Depreciation of Investments Reserve Fund—						
		£2,254 14s. 4d. Conversion 2½ per cent. Stock				2,333	13	11
		„ Cash at Bank—						
		General Accounts—Deposit Account	24,000	0	0			
		Catering Departments—Deposit Account	5,500	0	0			
		Do. —Current Account	619	14	5			
		Do. —Equipment and Repairs						
		Stabilisation Fund	626	4	4			
		Composition Fund	90	0	0			
		Elephant House Re-building Fund	215	3	0			
		Pensions Fund		10	0			
		Animals Purchase and Insurance Fund	3	5	4			
						31,054	17	1
		Less Overdrawn—						
		General Accounts—Current Account	1,762	11	5			
						29,292	5	8
	£212,878	Carried forward	29,292	5	8	£224,879	9	2

48423.7.6
12094.4.4
36329.3.2

Comp.
Figures,
1936.

LIABILITIES.

£		£	s.	d.	£	s.	d.	£	s.	d.
78,127	Brought forward	335	18	8	38,878	1	2	46,922	10	8
To Balance being Excess of Assets over Liabilities—continued—										
Legacies Suspense Account—continued—										
Legacies received during year to be applied towards special expenditure—										
	From the late Miss J. Lindley	1,000	0	0						
	Do. Mrs. M. L. Paget	250	0	0						
814		<hr/>			1,585	18	8			
General Purposes Account—										
	Balance at 1st January, 1937 ...	147,383	14	9						
	Deduct Decrease in value of Animals	1,233	0	0						
		<hr/>			146,150	14	9			
	Add Increase on re-valuation of Library Books	6,519	5	0						
	Excess of Income over Expenditure during year ...	15,262	16	2						
147,384		<hr/>			167,932	15	11			
					<hr/>			208,396	15	9

£226,325

£255,319 6 5

ASSETS.

Comp. Figures, 1936.					£ s. d.			£ s. d.			£ s. d.		
s. d.	£												
0 8	212,878			Brought forward ...			29,292	5	8	224,879	9	2	
				By Cash Floats—									
				General Account	710	0	0					
				Catering Departments	248	19	10					
									958	19	10		
				„ Cash in Office—									
				General Account	125	3	3					
				Catering Departments	63	8	6					
									188	11	9		
	13,447											30,439	17 3

5 9

6 5

226,325

£255,319 6 5

Comp. Figures, 1936.	<i>INCOME.</i>						£	s.	d.	£	s.	d.
£	<u>REGENT'S PARK.</u>											
	<u>FELLOWS.</u>											
2,635	Admission Fees	2,613	0	0			
22,000	Subscriptions	22,650	3	0			
90	Transferable Ivory Tickets, Sale of	100	0	0			
										25,363	3 0	
	<u>GARDENS.</u>											
62,948	Admission of Visitors to Gardens	62,929	4	6			
	Pets' Corner and Photography—											
	Admission of Visitors, Photography and Sundry											
3,987	Receipts	6,247	19	2			
43	Photographers, Artists and Students Permit	60	7	6			
27	Cinematograph Film Permits	10	4	0			
2,456	Riding Receipts	2,438	8	1			
362	Automatic Feeding Machines—Receipts	354	0	6			
73	Bath and Push Chairs, Hire of	194	11	8			
536	Animals, etc., Sale of	585	1	1			
	Zoo Shop: Sale of Photographic Films, Souvenirs,											
506	Books, etc.	452	14	1			
155	Voice Machine—Receipts	—					
	Art Studio—											
	Grants (three quarters to date)—											
	London County Council	£262	10	0						
	Middlesex County Council	112	10	0						
							375	0	0			
	Artists' Permits	3	6	6						
							378	6	6			
95,818										73,650	17 1	
	<u>AQUARIUM.</u>											
8,562	Admission of Visitors	9,145	18	3			
272	Interest on Aquarium Reserve Fund Investment	249	18	8			
										9,395	16 11	
	<u>LIBRARY, PUBLICATIONS, ETC.</u>											
	"Zoological Record"—											
	Subscriptions and Sales—											
	Vols. 1-58	£153	18	8						
	„ 59-72	£342	19	0						
	Vol. 73	885	13	2						
							1,228	12	2			
1,322										1,382	10 10	
	Scientific Publications—											
787	Subscriptions and Sales	955	4	6			
4,071	Official Guides, Sale of	4,223	12	7			
1,156	Picture Post Cards, Sale of	1,191	13	10			
45	Animal Wheel, Sale of	55	8	9			
										7,808	10 6	
	<u>INTEREST.</u>											
368	Investments and Bank Deposit				408	18 8	
£112,401	Carried forward				£116,627	6 2	

ENDING 31ST DECEMBER, 1937.

Comp. Figures, 1936.

EXPENDITURE.

s. d.	£	<u>REGENT'S PARK.</u>	£	s. d.	£	s. d.
		GARDENS.				
24,763		Salaries—Menagerie Staff and Keepers			25,432	14 1
		Animals, Cost and Carriage of	2,527	15 0		
		<i>Add</i> Contribution to Animals Purchase and Insurance Fund	300	0 0		
3 0	4,682				2,827	15 0
13,040		Provisions			11,720	9 1
		Menagerie Maintenance—Fuel, Light, Water, Uniforms, Cleaning, Utensils, Transport and Other Expenses...			9,808	5 6
		Prosectorium Expenses—				
		£1,638 Salaries and Wages	1,686	8 10		
		146 Chemicals, Apparatus, etc.	158	5 7		
1,784					1,844	14 5
		Gardeners' Expenses—				
		£3,803 Salaries and Wages	3,594	5 10		
		806 Seeds, Plants, Implements, etc.	460	4 3		
4,609					4,054	10 1
		Resident Curator's House and Keepers' Lodges—				
		Fuel, Light, Wages, etc.			371	17 6
2,453		Rent, Rates and Insurance			2,836	7 8
		Band Expenses—				
		£1,867 Band, Programmes, Licence, etc.	1,409	14 6		
		225 <i>Amplifying Equipment</i>				
					1,409	14 6
		£2,092				
		126 <i>Deduct Broadcasting Fees received</i>				
1,966					1,409	14 6
971		Advertising			534	13 10
		Pets' Corner and Photography—				
		£1,203 Salaries and Wages	1,601	6 2		
		95 <i>Equipment (Cameras, etc.)</i>				
		Materials, Provisions, Repairs, Uniforms, Stationery, Postages, etc....	2,438	9 3		
					4,039	15 5
		£2,870			112	7 6
		75 <i>Deduct Income from Advertisements</i>				
2,795					3,927	7 11
		Zoo Shop—				
		£90 Salaries and Wages	85	13 6		
		112 <i>Equipment (Cash Registers, etc.)</i>				
		Photographic Films, Souvenirs, Books, Stationery, etc.	266	10 3		
535					352	3 9
375		Voice Machine				
		Leasehold Property (Quarantine Station), Amount written off			375	0 0
	£68,034				£65,495	13 4
		WORKS AND ELECTRICAL DEPARTMENTS.				
		Upkeep of Electrical Installations, Paths and Buildings in Gardens, House and Offices, Minor Improvements, etc. (excluding Aquarium, Pets' Corner and Catering Department)—				
		£9,139 Salaries and Wages	7,781	2 1		
		8,091 Materials and Sundries	6,692	10 1		
17,230					14,473	12 2
6 2	£85,264	Carried forward			£79,969	5 6

INCOME.

Comp. Figures, 1936.		£	s.	d.	£	s.	d.
112,401	Brought forward				116,627	6	
<u>DONATIONS, LEGACIES AND MISCELLANEOUS.</u>							
6	Donations		13	19	8		
2,155	De Arroyave Trust Fund—Balance of Income (see page 89)		1,491	13	7		
900	Legacy						
(For 1937 Legacies see Balance Sheet, page 74.)							
106	Miscellaneous Receipts		51	9	11		
					1,557	3	
£115,568					£118,184	9	
<u>CATERING DEPARTMENT, REGENT'S PARK.</u>							
£5,680	Profit for the year		3,910	9	2		
4,000	Rent of Department		4,000	0	0		
937	„ Lavatories		924	0	0		
10,617			8,834	9	2		
2,569	Deduct Cost of Repairs, Alterations, etc., carried out by Works Department		1,958	15	1		
8,048					6,875	14	
£123,616	Carried forward				£125,060	3	5

DECEMBER, 1937.

Comp. Figures, 1936.		EXPENDITURE.									
£		REGENT'S PARK.				£	s.	d.	£	s.	d.
85,264		Brought forward			79,969	5	6
AQUARIUM.											
£3,440		Salaries and Wages	3,588	3	3		
968		Exhibits, Cost and Carriage of	898	8	2		
4,660		Provisions, Sea Water, Repairs, Fittings, Uniforms, Fuel, Light, Rates, Insurance, and Other Expenses	2,734	15	5		
1,000		Contribution to Aquarium Reserve Fund	1,000	0	0		
10,068							8,221	6	10		
		Deduct Transfer from Aquarium Reserve Fund	280	0	0		
8,168									7,941	6	10
CORONATION CELEBRATIONS.											
		Dinner, Entertainment, Decorations, etc.	1,420	19	10		
		Deduct Sale of Dinner and Entertainment Tickets	802	2	6		
									618	17	4
LIBRARY, PUBLICATIONS, ETC.											
Library—											
£932		Salaries and Wages	916	8	10		
725		Books and Binding, etc.	662	8	3		
1,657							1,578	17	1		
3		Cinematograph Expenses					
"Zoological Record"—											
		Preparation and Printing of Vol. 73	2,256	3	9		
Deduct Transfers from—											
		Davis Fund	76	0	0		
		De Arroyave Trust Fund	424	0	0		
		Donations transferred from Reserve Fund	527	11	7		
							1,027	11	7		
1,230									1,228	12	2
"Nomenclator Zoologicus"—											
		Preparation of	477	14	1		
		Deduct Amount appropriated from Legacy (see page 74)	477	14	1		
2,474		Scientific Publications, Cost of	3,096	6	7		
Official Guides, Cost of—											
£2,227		Preparation and Printing	2,832	3	4		
		Deduct Income from Advertisements	403	14	10		
1,825							2,428	8	6		
Picture Post Cards, Cost of—											
£395		Printing, Envelopes, etc.	425	2	3		
25		Repairs to Machine	20	0	0		
							445	2	3		
		Deduct Income from Advertisements	200	0	0		
217							245	2	3		
1,116		Animal Wheel, Cost of					
50		"Zoo" Magazine—Preliminary Work					
									8,577	6	7
102,004		Carried forward			£97,106	16	3

INCOME.

Comp. Figures, 1936.

£

REGENT'S PARK.

£

s.

123,616

Brought forward

125,060 3

Con. Fig. 1936.

£

102,000

£123,616

Total Income, Regent's Park (see page 86)

£125,060 3

£125,000

YEAR END DECEMBER, 1937.

Comp.
Figures,
1936.

EXPENDITURE.

		REGENT'S PARK.						£	s.	d.	£	s.	d.	
060	3	102,004	Brought forward				97,106	16	3		
<u>SCIENTIFIC GRANTS AND MEDALS.</u>														
		£96	Grants paid	779	4	0					
		96	Deduct Transfer from De Arroyave Trust Fund	779	4	0					
											
5			Medals, Cost of	4	11	0					
<u>ADMINISTRATION.</u>														
6,969			Salaries, Office	6,863	0	2					
			House and Office Expenses—											
642			Wages of Housekeeper and Cleaners	615	9	4						
25			Uniforms	22	3	0						
244			Fuel and Light	226	10	7						
247			Telephones	321	19	4						
708			Postages, Parcels, etc.	575	18	11						
84			Refreshments at Meetings, etc.	71	4	10						
294			Rates, Insurance and Water	293	9	8						
			Fittings, Furniture, Office Appliances, etc.	233	4	7						
327			House Requisites, Cleaning, etc.	95	16	11						
88			Sundries	42	18	1						
							2,498	15	3			
1,689			Stationery and Printing (General)	1,571	19	3					
264			Law Expenses and Compensation	157	5	6					
6			Miscellaneous Payments	36	17	1					
									11,127	17	3
<u>PENSIONS.</u>														
		£3,505	Gardens	3,651	11	4					
		1,800	Office	1,800	0	0					
											
		5,305		5,451	11	4					
			Deduct Interest on Pensions Fund Investment	254	3	5					
5,062									5,197	7	11
<u>INTEREST.</u>														
856			Regent's Park Catering Department Loan	711	7	4					
—			Art Studio Loan	122	10	10					
									833	18	2
119,545			Total Maintenance						114,270	10	7
<u>SPECIAL WORKS.</u>														
			Elephant House (on account)—											
			Architect Fees, Plans and Models	1,284	17	0					
			Deduct Transfer from Elephant House (Re-building Fund)	1,284	17	0					
											
			Construction of Art Studio (Balance)	1,435	1	7					
			Erection of Canal Fence	263	17	1					
			Quarantine Station—Alterations, Purchase of Petrol Pumps and Furniture, Legal Costs, etc.	1,518	3	0					
6,722									3,217	1	8
0	3	£126,267	Total Expenditure, Regent's Park (see page 87)...									£117,487	12	3

INCOME.

WHIPSONADE PARK.

Comp. Figures, 1936.	£		£	s.	d.	£	s.	d.	£	s.	d.	
	GARDENS.											
20,242		Admission of Visitors to Park ...	22,968	4	0							
235		Do. Cars Do. ...	278	5	0							
			<hr/>			23,246	9	0				
	Car Park—											
3,281		Parking Fees ...	3,724	16	6							
1,111		Petrol, Oil, etc., Sale of ...	1,346	9	8							
			<hr/>			5,071	6	2				
1		Photographers', Artists' and Students' Permits ...						2	6			
2		Cinematograph Film Permits ...				4	0	0				
785		Omnibus Receipts ...				759	14	9				
665		Riding Receipts ...				733	18	1				
48		Bath and Push Chairs, Hire of ...				62	7	9				
3		Field Glasses, Hire of ...				1	13	0				
146		Animals, etc., Sale of ...				374	19	9				
			<hr/>						30,254	11	0	
26,519												
	PUBLICATIONS, ETC.											
1,141		Official Guides, Sale of ...				1,288	7	0				
197		Picture Post Cards, Sale of ...				242	17	8				
			<hr/>						1,531	4	8	
	ESTATE OFFICE, BOTHY, COTTAGES, ETC.											
52		Rent of Cottages ...				52	0	0				
		Subsidy under Housing (Financial Provisions) Act 1924										
44		re Cottages ...				44	0	0				
1		Miscellaneous Receipts ...				1	0	3				
			<hr/>						97	0	3	
27,954									31,882	15	11	
	CATERING DEPARTMENT.											
	£3,755	Profit for the year ...	4,920	0	3							
	1,152	Deduct Cost of Repairs, Alterations, etc., carried out by Works Department ...	805	16	6							
2,603			<hr/>			4,114	3	9				
£30,557		Carried forward ...				£35,996	19	8				

Com. Fig. 1936. £ 7.9 3.7 1.6 8 9 8 4 16.6 7. £25.1 £25.1

Comp. Figures, 1936.

EXPENDITURE.

		WHIPSNADÉ PARK.		£ s. d.		£ s. d.	
8.	£						
<u>GARDENS.</u>							
	7,916	Salaries, Menagerie Staff, Keepers and Annuity	...			8,433	15 3
	143	Animals, Cost and Carriage of			308	12 2
	3,759	Provisions, including Cultivation of Land, etc.	...			4,063	7 0
	1,667	Menagerie Maintenance—Fuel, Light, Water, Uniforms, Cleaning, Utensils, Transport and Other Expenses... Gardeners' Expenses—				2,059	1 1
		£714 Salaries and Wages		982 8 8		
		108 Seeds, Plants, Implements, etc.		158 19 6		
	822					1,141	8 2
	976	Car Park—Cost of Petrol, Oil, etc.			1,193	11 2
	854	Rent, Rates and Insurance			900	3 5
	490	Advertising			856	11 8
	—	Midsummer Eve Party			102	9 6
11	16,627					19,058	19 5
<u>WORKS DEPARTMENT.</u>							
		Upkeep of Paths, Enclosures, Buildings, Minor Improvements, etc. (excluding Catering Department)—					
4		£3,968 Salaries and Wages		3,447 7 6		
		3,221 Materials and Sundries		2,369 14 5		
	7,189					5,817	1 11
<u>PUBLICATIONS, ETC.</u>							
		Official Guides, Cost of—					
0		Preparation and Printing (New					
		£793 Guide)	1,261 1 11			
15		Deduct Income from Advertisements	148 8 0			
		76				1,112 13 11	
	717					82 6 4	
	47	Picture Post Cards, Cost of Printing, etc.				1,195 0 3
<u>SCIENTIFIC GRANTS.</u>							
		Grants Paid		70 0 0		
		Deduct Transfer from De Arroyave Fund		70 0 0		
<u>ESTATE OFFICE, BOTHY, COTTAGES, ETC.</u>							
		Fuel, Light, Wages, Refreshments, Telephones, Cleaning, Postages, Fittings and Furniture, etc.		500 1 5		
	453					133 3 9	
	91	Stationery and Printing (General)			4 13 0	
	39	Law Expenses and Compensation			28 9 2	
	27	Income Tax (Schedule A)			1 3 6	
	—	Miscellaneous Payments				667 10 10
<u>INTEREST.</u>							
	—	Purchase of further Land and Premises—Loan	...				32 13 6
	£25,190	Total Maintenance			£26,771	5 11
19	8	£25,190	Carried forward		£26,771	5 11

INCOME.

WHIPSNADE PARK.

Comp. Figures, 1936.		£	s.	d.
30,557	Brought forward	35,996	19	
<hr/>				
30,557	Total Income, Whipsnade Park	35,996	19	
123,616	Total Income, Regent's Park (see page 82)	125,060	3	
<hr/>				
154,173		161,057	3	
4,267	<i>Balance being Excess of Expenditure over Income for the year carried to Balance Sheet</i>			
<hr/>				
£158,440		£161,057	3	

Com. Figure 19

£

25,19

6,98

32,17

126,20

158,44

£158,44

ENDING DECEMBER, 1937

EXPENDITURE.

Comp. Figures, 1936.	WHIPSNAD PARK.						£	s.	d.	£	s.	d.
25,190	Brought forward									26,771	5	11
DEVELOPMENT ACCOUNT.												
Improvement and Extension of County Roads—												
Moiety of Loan Charges repaid to Bedfordshire												
	County Council						961	10	0			
	Paddocks						73	18	9			
	Architects' Fees—Proposed New Buildings						500	0	0			
6,983										1,535	8	9
32,173	Total Expenditure, Whipsnade Park									28,306	14	8
126,267	Total Expenditure, Regent's Park (see page 83)									117,487	12	3
										145,794	6	11
158,440	Balance being Excess of Income over Expenditure for the year carried to Balance Sheet									15,262	16	2
										£161,057	3	1

Comp. Figures, 1936.

INCOME.

DE ARROYAVE TRUST

Trustees—The Official Trustees of Charitable Funds

£103,305 7 9

£ Interest on Investment (per Official Trustees of Charitable Funds)

£ s. d. £ s. d. £ s. d.
3,099 3 2

£3,099

£3,099 3 2

CHILLINGHAM TRUST

Trustees—The Right Hon. the Earl Grey, S. Gl.

143 Subscriptions and Donations
Contribution by the Society transferred from the De
337 Arroyave Trust Fund

136 11 6
327 17 7

464 9 1

£480

£464 9 1

DAVIS TRUST

£1,520 Southern Railway 5 per cent

76 Interest on Investment

76 0 0

£76

£76 0 0

We hereby certify that we have audited the Books, Accounts and Vouchers of the Society for the year ending December 31, 1937, and that the above Balance Sheet and accompanying Income and Expenditure Accounts truly set forth the position as shown by the books of the Society. We have verified the explanations we have required.

23, Queen Victoria Street, London, E.C.4.
24th February, 1938.

YEAR ENDED DECEMBER, 1937.

Comp. Figures, 1936.

EXPENDITURE.

DEARBY TRUST FUND.

Trustees Charitable Funds.

Funding per cent. Stock.

s. d.	£		£	s.	d.	£	s.	d.	
	3	Upkeep of the De Arroyave Grave at Highgate ...		3	3	0			
99 3 2	3	Expenses re Inspection of Mausoleum at Westbury ...		3	5	0			
	11	Repairs to Mausoleum at Westbury ...							
		Balance of Income appropriated to—					6	8	0
	337	Chillingham Cattle Fund—Contribution ...		327	17	7			
	424	“ Zoological Record ”—Cost of Vol. 73 ...		424	0	0			
	96	Scientific Grants—Regent’s Park ...		779	4	0			
	70	Do. Whipsnade Park ...		70	0	0			
	2,155	Transfer to Income and Expenditure Account (see page 80) ...		1,491	13	7			
							3,092	15	2
9 3 2		£3,099					£3,099	3	2

CHILLINGHAM CATTLE FUND.

Trustees: Mr. Carl Grey, Mr. S. Gladstone, Esq., and Captain Cecil G. Graves, M.C.

	250	Rent of Park ...		250	0	0			
	230	Contribution towards cost of Maintenance ...		214	9	1			
							464	9	1
4 9 1		£480					£464	9	1

DEARBY TRUST FUND.

Railway 5 per cent. Preference Stock.

	76	Applied towards Fees of Editor of “ Zoological Record ”					76	0	0
6 0 0		£76					£76	0	0

The auditors have examined the accounts of the Society for the year ended 31st December, 1937, and have found them to be in order and that the expenditure accounts have been drawn up in strict conformity therewith and that they fully and accurately represent the transactions and investments and the Cash Balances and have received all the information and

W. B. KEEN & CO.,
Chartered Accountants.

REPORTS

OF THE

COUNCIL AND AUDITORS

OF THE

ZOOLOGICAL SOCIETY

OF LONDON,

FOR THE YEAR 1934,

PREPARED FOR THE ANNUAL GENERAL MEETING,

TO BE HELD AT THE SOCIETY'S OFFICES IN REGENT'S PARK, ON

MONDAY, APRIL 29TH, 1935,

AT 4 P.M.

PRINTED BY
WATERLOW & SONS LIMITED
LONDON, DUNSTABLE & WATFORD.
1935.

THE
ZOOLOGICAL SOCIETY
OF LONDON.



THIS Society, founded in 1826 by Sir STAMFORD RAFFLES, Sir HUMPHRY DAVY, President of the Royal Society, and other eminent Naturalists, for the advancement of Zoology and Animal Physiology, and for the introduction of new and curious subjects of the Animal Kingdom, was incorporated by Royal Charter in 1829.

PATRON
HIS MAJESTY THE KING.

COUNCIL.
1934—1935.

HIS GRACE THE DUKE OF BEDFORD, K.G., F.R.S.,
President.

MAJOR ALBERT PAM, O.B.E., *Treasurer.*

SIR PETER CHALMERS MITCHELL, C.B.E., M.A., D.Sc.,
LL.D., F.R.S., *Secretary.*

FIELD-MARSHAL THE VISCOUNT ALLENBY, G.C.B.,
G.C.M.G., *Vice-President.*

SIR JOHN BLAND-SUTTON, Bt., F.R.C.S., *Vice-President.*

THE HON. ANTHONY CHAPLIN.

COL. S. MONCKTON COPEMAN, M.D., F.R.S.

ALFRED EZRA, Esq., O.B.E.

MAJOR THE LORD FORESTER.

HUGH S. GLADSTONE, Esq., M.A., F.R.S.E.

PROF. JAMES P. HILL, D.Sc., F.R.S., *Vice-President.*

COL. THE LORD ALASTAIR R. INNES-KER, D.S.O.

NORMAN B. KINNEAR, Esq.

LT.-GENL. SIR GEORGE M. W. MACDONOGH, G.B.E.,
K.C.B., K.C.M.G.

HENRY G. MAURICE, Esq., C.B., *Vice-President.*

SHEFFIELD A. NEAVE, Esq., O.B.E., M.A., D.Sc.

THE EARL OF ONSLOW, P.C., O.B.E., *Vice-President.*

THE LORD SCONE, M.P.

MAJOR RICHARD S. TAYLOR.

BERNARD W. TUCKER, Esq., M.A.

SIR ARTHUR SMITH WOODWARD, LL.D., F.R.S., *Vice-
President.*

AQUARIUM RULES.

UNTIL further notice the rules for admission to the Aquarium are as follows :—

Fellows (including Honorary Members, Foreign Members and Corresponding Members) and wives and husbands of Fellows have free personal admission on Sundays and Week-days by signing in the book at the Aquarium Entrance Hall

Fellows only may also take with them on Sundays, but not on Week-days, two friends already in the Gardens.

Fellows (including Honorary, Foreign and Corresponding Members) have the privilege of purchasing books of 20 Aquarium Tickets for £1, each ticket admitting one adult or two children on Week-days or Sundays. Aquarium Tickets can be purchased by Fellows at the Office, but not at the Aquarium. Fellows may also use their green tickets in place of Aquarium tickets for giving admission to the Aquarium.

Fellows may purchase Aquarium Ivory Tickets for the sum of ten pounds each, valid for the duration of the Fellowship, and admitting two persons to the Aquarium, on any day.

The Public already in the gardens can obtain admission to the Aquarium daily, including Sundays, by paying an extra charge, 1/- for adults and 6d. for children under 12, except Mondays (not Bank Holidays), when it is 6d. for everyone.

On Thursday evenings, from June 21st to September 13th inclusive, when the Gardens are open after 8 p.m., the Aquarium will be free to Fellows only, but all other adult visitors must pay 1/- and children 6d. each.

Children from Elementary Schools, admitted to the Gardens on certain mornings at the rate of 1d. each, are also admitted to the Aquarium on Tuesdays between 9 a.m. and 11 a.m., at the rate of an additional 1d. each, the tickets to be purchased in advance.

For rates for excursion parties, see p. 36.

By Order of the Council,
(Signed) P. CHALMERS MITCHELL,

Secretary.

EVENING OPENINGS



THE Gardens will be open on Thursday Evenings from June 20th to August 29th inclusive. Dinners will be served at 4/6 in the Fellows' Room and Lower Restaurant.

THE ZOOLOGICAL RECORD



THE Annual volumes of this comprehensive bibliography of Zoological literature, with subject and systematic indexes, prepared and published by the Zoological Society of London, are issued complete every Autumn, and the separate sections earlier in the year.

PRICES TO FELLOWS,

Whole Volume, 50s.

SECTIONS

	s.	d.		s.	d.
General Zoology	-	3 0	Trilobita		
Protozoa	-	3 0	Arachnida	-	4 0
Porifera	-	2 6	Myriopoda		
Cœlenterata	-	2 6	Insecta	-	15 0
Echinoderma	-	4 0	Prochordata	-	2 0
Vermes	-	3 6	Pisces	-	3 6
Brachiopoda			Reptilia		
Bryozoa	-	2 6	Amphibia	-	3 0
Mollusca	-	5 0	Aves	-	7 6
Crustacea	-	3 0	Mammalia	-	3 0
			Abbreviations	-	2 6
			New Genera	-	2 6

For further particulars see pp. 16-19 of this Report.

REPORTS

OF THE

COUNCIL AND AUDITORS

OF THE

ZOOLOGICAL SOCIETY

OF LONDON,

FOR THE YEAR 1935,

PREPARED FOR THE ANNUAL GENERAL MEETING,

TO BE HELD AT THE SOCIETY'S OFFICES IN REGENT'S PARK, ON

WEDNESDAY, APRIL 29TH, 1936,

AT 4 P.M.

IMPORTANT NOTICE.

The attention of Fellows is called to the fact that a special private entrance to the Fellows' Restaurant from the Outer Circle will be provided during the coming season for the use of Fellows and their guests desiring to lunch or dine in the Restaurant.

This entrance will be open between the hours of 12.30 p.m. and 2.30 p.m. daily throughout the year, and also on Wednesday and Thursday evenings from 7 p.m. till 11.30 p.m. from June 3rd to September 10th, 1936. For details of open Evenings see back cover.

It is hoped that Fellows will find the new form of the Report convenient, with its general account of progress, page 8.

REPORTS
OF THE
COUNCIL AND AUDITORS
OF THE
ZOOLOGICAL SOCIETY
OF LONDON,
FOR THE YEAR 1935,

PREPARED FOR THE ANNUAL GENERAL MEETING,

TO BE HELD AT THE SOCIETY'S OFFICES IN REGENT'S PARK, ON

WEDNESDAY, APRIL 29TH, 1936,

AT 4 P.M.

PRINTED BY
WATERLOW & SONS LIMITED
LONDON AND DUNSTABLE.
1936.

THE
ZOOLOGICAL SOCIETY
OF LONDON.



THIS Society, founded in 1826 by SIR STAMFORD RAFFLES, SIR HUMPHRY DAVY, President of the Royal Society, and other eminent Naturalists, for the advancement of Zoology and Animal Physiology, and for the introduction of new and curious subjects of the Animal Kingdom, was incorporated by Royal Charter in 1829.

PATRON
HIS MAJESTY THE KING.

COUNCIL.
1935—1936.

HIS GRACE THE DUKE OF BEDFORD, K.G., F.R.S.,
President.

MAJOR ALBERT PAM, O.B.E., *Treasurer.*

JULIAN S. HUXLEY, ESQ., M.A., D.Sc., *Secretary.*

FIELD-MARSHAL THE VISCOUNT ALLENBY, G.C.B.,
G.C.M.G., *Vice-President.*

THE HON. ANTHONY CHAPLIN.

COL. S. MONCKTON COPEMAN, M.D., F.R.S.

ALFRED EZRA, ESQ., O.B.E., *Vice-President.*

MAJOR STANLEY S. FLOWER, O.B.E., F.L.S.

HUGH S. GLADSTONE, ESQ., M.A., F.R.S.E.

PROF. JAMES P. HILL, D.Sc., F.R.S., *Vice-President.*

NORMAN B. KINNEAR, ESQ.

PROF. ERNEST W. MACBRIDE, M.A., D.Sc., LL.D., F.R.S.,
Vice-President.

LT.-GENL. SIR GEORGE M. W. MACDONOGH, G.B.E., K.C.B.,
K.C.M.G.

COL. SIR A. HENRY McMAHON, G.C.M.G., G.C.V.O.,
K.C.I.E., C.S.I.

THE RT. HON. THE LORD MOYNE, P.C., D.S.O.

SHEFFIELD A. NEAVE, ESQ., O.B.E., M.A., D.Sc.

THE EARL OF ONSLOW, P.C., O.B.E., *Vice-President.*

MAJOR RICHARD S. TAYLOR.

BERNARD W. TUCKER, ESQ., M.A.

ANTHONY H. WINGFIELD, ESQ., D.L.

SIR ARTHUR SMITH WOODWARD, LL.D., F.R.S.,
Vice-President.

THE ZOOLOGICAL RECORD

THE Annual volumes of this comprehensive bibliography of Zoological literature, with subject and systematic indexes, prepared and published by the Zoological Society of London, are issued complete every Autumn, and the separate sections earlier in the year.

PRICES TO FELLOWS,
Whole Volume, 50s.

		SECTIONS			
		s.	d.	s.	d.
General Zoology	-	3	0	Trilobita	
Protozoa	-	3	0	Arachnida	4 0
Porifera	-	2	6	Myriopoda	
Cœlenterata	-	2	6	Insecta	15 0
Echinoderma	-	4	0	Prochordata	2 0
Vermes	-	3	6	Pisces	3 6
Brachiopoda	}			Reptilia	3 0
Bryozoa	}	2	6	Amphibia	3 0
Mollusca	-	5	0	Aves	7 6
Crustacea	-	3	0	Mammalia	3 0
				Abbreviations	2 6
				New Genera	2 6

For further particulars see p. 30 of this Report.

CENTENARY VOLUMES

The following volumes, prepared for the Centenary, are now on sale at the Office at reduced prices:—

Centenary History of the Zoological Society of London. With many Portraits. Written by the Secretary. Price 10s. net.

List of the animals, 1826-1927. Being a Classified List of all the Species of Vertebrated Animals living in the Society's Gardens from 1826-1927 inclusive, giving for each Species the Scientific Name, the various Synonyms or other Scientific Names that have been applied to it, popular, local and trade Names where known, the habitat, a reference to the original description and where possible to a figure and popular description.

Vol. I.—Mammals. By Major Stanley Smyth Flower, O.B.E., F.Z.S. Price 10s net. Vol. II.—Birds. By George Carmichael Low, M.A., M.D., F.R.C.P., F.Z.S. Price 10s. net. Vol. III—Reptiles, Amphibians and Fishes. By Major Stanley Smyth Flower, O.B.E., F.Z.S., Malcolm Arthur Smith, M.R.C.S., L.R.C.P., F.Z.S., and Edward George Boulenger, F.Z.S. Price 10s. net.

OPEN EVENINGS

The Gardens WILL BE OPEN

till 11.30 p.m. on

WEDNESDAYS & THURSDAYS

FROM

JUNE 3rd to SEPTEMBER 10th

1936

FLOODLIGHTING

THE BAND OF H.M. GRENADIER GUARDS
will play on these evenings from 8 till 11 p.m.

Dinners, Refreshments, &c.

Dinners at 7/6 and 4/6 in the Fellows' and Main Restaurants
from 7 till 10 p.m.

Dinners and Light Refreshments (à la carte) in the Pavilion
near Bandstand.

Cold Suppers and Light Refreshments (à la carte) at the
Mappin Terrace Pavilion.

All the above are fully licensed, with meals.

Refreshments at all other Kiosks.

REPORTS

OF THE

COUNCIL AND AUDITORS

OF THE

ZOOLOGICAL SOCIETY

OF LONDON

FOR THE YEAR 1936

PREPARED FOR THE ANNUAL GENERAL MEETING

TO BE HELD AT THE SOCIETY'S OFFICES IN REGENT'S PARK, ON

THURSDAY, APRIL 29th, 1937

AT 4 P.M.

PRINTED BY
RICHARD CLAY & SONS, LTD.
BUNGAY, SUFFOLK

1937.

THE
ZOOLOGICAL SOCIETY
OF LONDON.

THIS Society, founded in 1826 by SIR STAMFORD RAFFLES, SIR HUMPHRY DAVY, President of the Royal Society, and other eminent Naturalists, for the advancement of Zoology and Animal Physiology, and for the introduction of new and curious subjects of the Animal Kingdom, was incorporated by Royal Charter in 1829.

PATRON.

HIS MAJESTY THE KING.

COUNCIL.

1936—1937.

- THE EARL OF ONSLOW, P.C., O.B.E., *President*.
MAJOR ALBERT PAM, O.B.E., *Treasurer*.
JULIAN S. HUXLEY, ESQ., M.A., D.Sc., *Secretary*.
THE HON. ANTHONY CHAPLIN.
PROF. WILFRID E. LE GROS CLARK, D.Sc., F.R.C.S., F.R.S.,
Vice-President.
COL. S. MONCKTON COPEMAN, M.D., F.R.S.
JEAN DELACOUR, ESQ.
ALFRED EZRA, ESQ., O.B.E., *Vice-President*.
HUGH S. GLADSTONE, ESQ., M.A., F.R.S.E.
FRANCIS HEMMING, ESQ., C.B.E.
PROF. JAMES P. HILL, D.Sc., F.R.S.
J. SPEDAN LEWIS, ESQ.
PROF. ERNEST W. MACBRIDE, M.A., D.Sc., LL.D., F.R.S., *Vice-President*.
LT.-GENL. SIR GEORGE M. W. MACDONOGH, G.B.E., K.C.B.,
K.C.M.G.
COL. SIR A. HENRY McMAHON, G.C.M.G., G.C.V.O., K.C.I.E.,
C.S.I.
HENRY G. MAURICE, ESQ., C.B.
THE RT. HON. THE LORD MOYNE, P.C., D.S.O., *Vice-President*.
MAJOR RICHARD S. TAYLOR.
BERNARD W. TUCKER, ESQ., M.A.
SIR ANTHONY H. WINGFIELD, D.L.
SIR ARTHUR SMITH WOODWARD, LL.D., F.R.S., *Vice-President*.
Extraordinary Member of Council and Honorary Vice-President :—
HIS GRACE THE DUKE OF BEDFORD, K.G., F.R.S.

THE ZOOLOGICAL RECORD

THE Annual volumes of this comprehensive bibliography of Zoological literature, with subject and systematic indexes, prepared and published by the Zoological Society of London, are issued complete every Autumn, and the separate sections earlier in the year.

PRICES TO FELLOWS

Whole Volume, 50s.

SECTIONS

	s.	d.		s.	d.
General Zoology	-	3	0	Trilobita	
Protozoa	-	3	0	Arachnida	-
Porifera	-	2	6	Myriopoda	-
Cœlenterata	-	2	6	Insecta	-
Echinoderma	-	4	0	Prochordata	-
Vermes	-	3	6	Pisces	-
Brachiopoda	-	2	6	Reptilia	-
Bryozoa	-	2	6	Amphibia	-
Mollusca	-	5	0	Aves	-
Crustacea	-	3	0	Mammalia	-
				Abbreviations	-
				New Genera	-

For further particulars see p. 19 of this Report.

CENTENARY VOLUMES

The following volumes, prepared for the Centenary, are now on sale at the Office at reduced prices:—

Centenary History of the Zoological Society of London. With many Portraits. Written by the Secretary. Price 10s. net.

List of the animals, 1826-1927. Being a Classified List of all the Species of Vertebrated Animals living in the Society's Gardens from 1826-1927 inclusive, giving for each Species the Scientific Name, the various Synonyms or other Scientific Names that have been applied to it, popular, local and trade Names where known, the habitat, a reference to the original description and where possible to a figure and popular description.

Vol. I.—Mammals. By Major Stanley Smyth Flower, O.B.E., F.Z.S. Price 10s. net. Vol. II.—Birds. By George Carmichael Low, M.A., M.D., F.R.C.P., F.Z.S. Price 10s. net. Vol. III.—Reptiles, Amphibians and Fishes. By Major Stanley Smyth Flower, O.B.E., F.Z.S., Malcolm Arthur Smith, M.R.C.S., L.R.C.P., F.Z.S., and Edward George Boulenger, F.Z.S. Price 10s. net.

OPEN EVENINGS

The Gardens WILL BE OPEN

till 11.30 p.m. on

WEDNESDAYS & THURSDAYS

FROM

JUNE 2nd to SEPTEMBER 9th

1937

FLOODLIGHTING

THE BAND OF H.M. GRENADIER GUARDS

will play on these evenings from 8 till 11 p.m.

Dinners, Refreshments, &c.

Dinners at 7/6 and 4/6 in the Fellows' and Main Restaurants
from 7 till 10 p.m.

Dinners and Light Refreshments (à la carte) in the Pavilion
near Bandstand.

Cold Suppers and Light Refreshments (à la carte) at the
Mappin Terrace Pavilion.

All the above are fully licensed, with meals.

Refreshments at all other Kiosks.

REPORTS
OF THE
COUNCIL AND AUDITORS
OF THE
ZOOLOGICAL SOCIETY
OF LONDON

FOR THE YEAR 1937

PREPARED FOR THE ANNUAL GENERAL MEETING

TO BE HELD AT THE SOCIETY'S OFFICES IN REGENT'S PARK, ON

FRIDAY, APRIL 29th, 1938

AT 4 P.M.

PRINTED BY
RICHARD CLAY & SONS, LTD.
BUNGAY, SUFFOLK

1938

THE
ZOOLOGICAL SOCIETY
OF LONDON.

THIS Society, founded in 1826 by SIR STAMFORD RAFFLES, SIR HUMPHRY DAVY, President of the Royal Society, and other eminent Naturalists, for the advancement of Zoology and Animal Physiology, and for the introduction of new and curious subjects of the Animal Kingdom, was incorporated by Royal Charter in 1829.

PATRON.

HIS MAJESTY THE KING.

COUNCIL.

1937—1938.

- THE EARL OF ONSLOW, P.C., F.S.A., *President.*
MAJOR ALBERT PAM, O.B.E., *Treasurer.*
JULIAN S. HUXLEY, Esq., M.A., D.Sc., F.R.S., *Secretary.*
RICHARD H. BURNE, Esq., M.A., F.R.S.
THE HON. ANTHONY CHAPLIN.
PROF. WILFRID E. LE GROS CLARK, D.Sc., F.R.C.S., F.R.S.,
Vice-President.
COL. S. MONCKTON COPEMAN, M.D., F.R.S.
JEAN DELACOUR, Esq.
LT.-COL. THE LORD FORESTER.
FRANCIS HEMMING, Esq., C.B.E.
PROF. JAMES P. HILL, D.Sc., F.R.S., *Vice-President.*
MARTIN A. C. HINTON, Esq., F.R.S.
J. SPEDAN LEWIS, Esq.
PROF. ERNEST W. MACBRIDE, M.A., D.Sc., LL.D., F.R.S., *Vice-
President.*
LT.-GENL. SIR GEORGE M. W. MACDONOGH, G.B.E., K.C.B.,
K.C.M.G.
COL. SIR A. HENRY McMAHON, G.C.M.G., G.C.V.O., K.C.I.E.,
C.S.I., *Vice-President.*
HENRY G. MAURICE, Esq., C.B.
THE RT. HON. THE LORD MOYNE, P.C., D.S.O., *Vice-President.*
SHEFFIELD A. NEAVE, Esq., O.B.E., M.A., D.Sc.
MAJOR ERNEST G. SOTHAM, M.C.
SIR ANTHONY H. WINGFIELD, D.L., *Vice-President.*

Extraordinary Member of Council and Honorary Vice-President :—
HIS GRACE THE DUKE OF BEDFORD, K.G., F.R.S.

THE ZOOLOGICAL RECORD

THE Annual volumes of this comprehensive bibliography of Zoological literature, with subject and systematic indexes, prepared and published by the Zoological Society of London, are issued complete every Autumn, and the separate sections earlier in the year.

PRICES TO FELLOWS

Whole Volume, 50s.

SECTIONS

	s.	d.		s.	d.
General Zoology	-	3	0	Trilobita	
Protozoa	-	3	0	Arachnida	-
Porifera	-	2	6	Myriopoda	-
Cœlenterata	-	2	6	Insecta	-
Echinoderma	-	4	0	Prochordata	-
Vermes	-	3	6	Pisces	-
Brachiopoda	-	2	6	Reptilia	-
Bryozoa	-	2	6	Amphibia	-
Mollusca	-	5	0	Aves	-
Crustacea	-	3	0	Mammalia	-
				Abbreviations	-
				New Genera	-

For further particulars see p. 23 of this Report.

CENTENARY VOLUMES

The following volumes, prepared for the Centenary, are now on sale at the Office at reduced prices:—

Centenary History of the Zoological Society of London. With many Portraits. Written by the Secretary. Price 10s. net.

List of the animals, 1826-1927. Being a Classified List of all the Species of Vertebrated Animals living in the Society's Gardens from 1826-1927 inclusive, giving for each Species the Scientific Name, the various Synonyms or other Scientific Names that have been applied to it, popular, local and trade Names where known, the habitat, a reference to the original description and where possible to a figure and popular description.

Vol. I.—Mammals. By Major Stanley Smyth Flower, O.B.E., F.Z.S. Price 10s. net. Vol. II.—Birds. By George Carmichael Low, M.A., M.D., F.R.C.P., F.Z.S. Price 10s. net. Vol. III.—Reptiles, Amphibians and Fishes. By Major Stanley Smyth Flower, O.B.E., F.Z.S., Malcolm Arthur Smith, M.R.C.S., L.R.C.P., F.Z.S., and Edward George Boulenger, F.Z.S. Price 10s. net.

2/107
S

OPEN EVENINGS

The Gardens WILL BE OPEN

till 11.30 p.m. on

WEDNESDAYS & THURSDAYS

FROM

JUNE 1st to AUGUST 31st

1938

FLOODLIGHTING

A BAND

will play on these evenings from 8 till 11 p.m.

Dinners, Refreshments, &c.

Dinners at 7/6 and 5/- in the Fellows' and Main Restaurants from 7 till 10 p.m.

Dinners and Light Refreshments (à la carte) in the Pavilion near Bandstand.

Cold Suppers and Light Refreshments (à la carte) at the Mappin Terrace Pavilion.

All the above are fully licensed, with meals.

Refreshments at all other Kiosks.

